



# Rafiki

2022









Rafiki - climbing clothing and accessories, made for climbers by climbers  
and for all those who share the passion of unrestrained movement and value individuality and originality.

#RAFIKICLIMBING



## WOMEN'S COLLECTION

page 6 - 51

<b>NEW</b>	AKIRA	19
	ALARÓ	43
<b>NEW</b>	ESTRELLA	31
	FEMIO	39
<b>NEW</b>	CHAIN	51
<b>NEW</b>	CHAIN CAPRI	49
	CHULILLA	17
	JAY	21
	KARIN	25
<b>NEW</b>	MANDREA	35
<b>NEW</b>	MASSONE	45
<b>NEW</b>	MURIEL	41
<b>NEW</b>	NAGO	09
<b>NEW</b>	ROSARIO	23
	SANTANA	29
	SELLA	47
	SEPHIRA	27
<b>NEW</b>	SUESCA	11
	TARRAGONA	37
<b>NEW</b>	TRANQUILLO	13
	VELLA	33
	VIBES II	15

## MEN'S COLLECTION

page 54 - 83

	CLIFFBASE	79
<b>NEW</b>	CLIP	59
	Crag	81
<b>NEW</b>	CRIMP	83
	CRUX	77
	DRIVE	73
	LEAD	69
	MEGOS	75
	MOONSTONE	71
<b>NEW</b>	PINCH	57
<b>NEW</b>	PITON	65
	SLACK	61
	SLACK PRINT	63
<b>NEW</b>	TRAVERSE	67



## KID'S COLLECTION

page 86 - 93

KAILAS JR	89
PEDRO JR	93
RUMNEY JR	91

## WINTER 2021 COLLECTION

page 96 - 113

ASCENT	109
 CANMORE	107
 DARCY	103
 DANTE	111
 LEDGE	113
LINYA	101
 MALHAM	99
 VIRAGE	105

## ACCESSORIES

page 114 - 119

BISHOP	118
BLISS	117
CAMP	117
FLINT	116
MAGNESIUM	119
ROPER	116
SCOOP	118

## PROMOTION

page 120 - 122

BANNER	120
BOW FLAG	120
CUBE	121
HANGER	123
LOGO STAND	121
NALGEN BOTTLE	123
STICKERS	123







# RAFIKI WOMEN





# NAGO NEW

CLIMBING  
BOULDERING  
MULTISPORT  
LIFESTYLE

PRODUCT VIDEO  
click or scan



87% POLYESTER + 13% ELASTANE  
92% POLYESTER + 8% ELASTANE

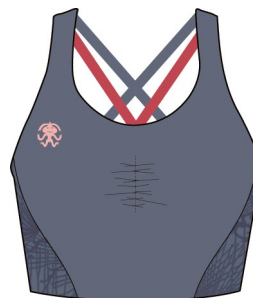
LIKE ♥♥♥

## WOMEN'S PERFORMANCE BRA

This new and improved women's bra will thrill every woman who's enthusiastic about climbing or yoga. Its material is breathable, quick-drying and light overall, making it a good choice for warm days or indoor climbing. It offers a maximum of support, and removable paddings. This bra isn't just functional; it's also fetching thanks to its thin and attractive crossed shoulder straps. Its cheerful colours and print underscore the easy-going spirit of every rock-climbing fan.

SLIM FIT / LIGHTWEIGHT / BREATHABLE / STRETCH / QUICK DRY  
INTERNAL BRA LINER WITH REMOVABLE MODESTY CUPS / X-SHAPED BACK STRIPES

SIZE: 34-40  
WEIGHT: [36] 102 G  
CENTRAL BACK LENGTH: [36] 37 CM



Folkstone Gray

10020044RFX



Chrysanthemum

10020045RFX



Columbia

10020043RFX

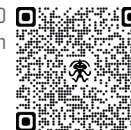




# SUESCA NEW

CLIMBING  
BOULDERING  
MULTISPORT  
LIFESTYLE

PRODUCT VIDEO  
click or scan



87% POLYESTER + 13% ELASTANE  
92% POLYESTER + 8% ELASTANE

LIKE ♥♥♥

WOMEN'S PERFORMANCE SINGLET WITH BUILT IN SPORT BRA

The Suesca women's functional singlet should be there in the backpack of every woman who loves climbing or yoga. Its material is breathable, quick-drying and light overall, making it a good choice for warm days or indoor climbing. Its internal bra offers a maximum of support, and removable paddings. This singlet has an attractively designed shoulder attachment in back, and its cheerful colours and full-surface print make you hard to miss on the cliffs and boulders.

SLIM FIT / LIGHTWEIGHT / BREATHABLE / STRETCH / QUICK DRY  
INTERNAL BRA LINER WITH REMOVABLE MODESTY CUPS / X-SHAPED BACK STRIPES

SIZE: 34-40  
WEIGHT: [36] 155 G  
CENTRAL BACK LENGTH: [36] 60 CM



Folkstone Gray

10020073RFX



Chrysanthemum

10020074RFX



Columbia

10020072RFX





# TRANQUILLO NEW

87% POLYESTER + 13% ELASTANE  
92% POLYESTER + 8% ELASTANE

LIKE ♥♥♥

## WOMEN'S PERFORMANCE CAPRI TIGHTS

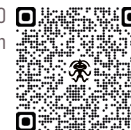
The new Tranquillo functional three-quarter leggings are an ideal article for both outdoor and indoor climbing, as well as yoga and slacklines. These leggings are quite light and breathable. They're also good for climbing in warm weather or indoor climbing walls. They have a wide waist cuff with a hidden pocket for small items that pleasantly encircles the waist and holds the leggings in place. These leggings' cheerful colours and full-surface print will liven up any simple singlet or sports bra.

SLIM FIT / BREATHABLE / STRETCH / QUICK DRY / FLATLOCK CONSTRUCTION  
WIDE WAIST BAND / TRIANGLE GUSSET FOR REINFORCEMENT AND COMFORT  
SMALL SECRET POCKET IN WAIST BAND

SIZE: 34-40  
WEIGHT: [36] 190 G  
SIDE SEAM LENGTH: [36] 70 CM

CLIMBING  
BOULDERING  
MULTISPORT  
LIFESTYLE

PRODUCT VIDEO  
click or scan



Folkstone Gray

10020080RFX

Chrysanthemum

10020081RFX

Columbia

10020079RFX





# VIBES II

50% ORGANIC COTTON + 50% LENZING MODAL  
ALTERNATIVE KNIT 1X1 (BAR-JERSEY)



CLIMBING  
BOULDERING  
MULTISPORT  
LIFESTYLE

PRODUCT VIDEO  
click or scan



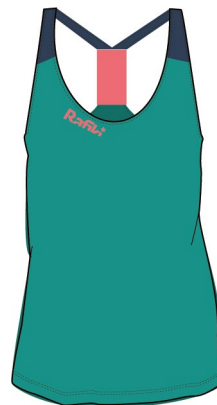
LIKE ♥♥♥

WOMEN'S PERFORMANCE LIGHTWEIGHT SINGLET

You will reach higher and further with the women's Vibes II comfortable top. You can rely on pleasant technical eco-friendly material which is light and moisture-wicking. Shoulder straps fit well and make your back look amazing – that's what we're talking about! The Vibes II top is just a perfect garment for all your activities, from yoga to fitness.

SLIM FIT / BREATHABLE / ORGANIC  
MOISTURE WICKING / INNER SHELL FABRIC BRA  
UNIQUE WIDE SINGLE STRAP RACERBACK

SIZE: 34-40  
WEIGHT: [36] 80 G  
CENTRAL BACK LENGTH: [36] 61 CM



Sugar coral  
(with Insignia blue)  
10020090RFX



Columbia  
(with Insignia blue)  
10020088RFX



Folkstone gray  
(with Insignia blue)  
10020089RFX





# CHULILLA

50% ORGANIC COTTON + 50% LENZING MODAL  
ALTERNATIVE KNIT 1X1 (BAR-JERSEY)



CLIMBING  
BOULDERING  
MULTISPORT  
LIFESTYLE

PRODUCT VIDEO  
click or scan



LIKE ♥♥♥

WOMEN'S PERFORMANCE LIGHTWEIGHT SHORT SLEEVE TEE  
Chulilla T-shirt is made of an eco-friendly material with neutral carbon footprint. The combination of 50% bio cotton and 50% Lenzing Modal® is light and airy. This garment is pleasant both to touch and to look at. You will definitely stand out among other climbers thanks to its colourful asymmetric parts.

STRAIGHT FIT / BREATHABLE / ORGANIC  
MOISTURE WICKING

SIZE: 34-42  
WEIGHT: [36] 85 G  
CENTRAL BACK LENGTH: [36] 61 CM



Sugar coral  
(with Insignia blue)  
10020014RFX



Columbia  
(with Insignia and Coral)  
10020012RFX



Folkstone gray  
(with Insignia blue)  
10020013RFX





RAFIKI

Climbing



Cherito

# AKIRA NEW

CLIMBING  
BOULDERING  
MULTISPORT  
LIFESTYLE

PRODUCT VIDEO  
click or scan



82% RECYCLED POLYESTER + 14% TENCEL + 4% ELASTANE  
100% POLYESTER

LIKE ♥♥♥

WOMEN'S PERFORMANCE LIGHTWEIGHT SINGLET

It's a unique new addition to our women's products. It's made from an environmentally sustainable and feather-light material that's great at wicking away sweat and will never chill you. Its loose fit and securely integrated bra ensure freedom of movement even during awkward manoeuvres. The cut-outs in back are practical and great-looking.

SLIM/LOOSE FIT / LIGHTWEIGHT / WICKING / BREATHABLE / SUSTAINABLE  
BUILT IN BRA WITH REMOVABLE PADS / OPEN BACK FOR MORE COOLING

SIZE: 34-40

WEIGHT: [36] 160 G

CENTRAL BACK LENGTH: [36] 65 CM



Joshua

10019984RFX



Dark Navy

10019983RFX





# JAY

100% ORGANIC COTTON [ SINGLE JERSEY 160 ]



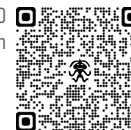
CLIMBING

BOULDERING

MULTISPORT

LIFESTYLE

PRODUCT VIDEO  
click or scan



LIKE ♥♥♥

WOMEN'S ORGANIC SHORT SLEEVE TEE

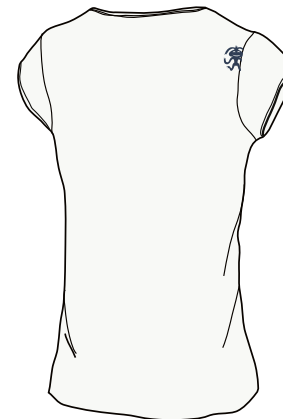
Comfortable leisure time T-shirt from organic cotton from climbing brand Rafiki. With Slack you will feel good and trendy, either on the rocks, or at school lectures or when just having fun with friends climbing over boulder walls.

REGULAR FIT / BREATHABLE / ORGANIC  
PRINTS VARIATION / WIDER NECK OPENING / RAW EDGE NECK AND SLEEVE HEMS

SIZE: 34-42

WEIGHT: [36] 95 G

CENTRAL BACK LENGTH: [36] 60 CM



Bright white (grlpwr)

10020016RFX



Sugar Coral

10020018RFX



Bluebird (grlpwr)

10020015RFX



Dark navy (rafiquita)

10020017RFX





# ROSARIO NEW

100% ORGANIC COTTON [ SINGLE JERSEY 160 ]



CLIMBING

BOULDERING

MULTISPORT

LIFESTYLE

LIKE ♥♥♥

## WOMEN'S COMFORTABLE ORGANIC DRESS

This great-looking women's leisure dress will mainly catch interest through its attractive segmented design and beautiful full-surface print. It's made from organic cotton – an environmentally-friendly material that is breathable and pleasant to the touch. Its high-contrast pocket can hold several small items, and it's an attention-getter too. The Rosario's comfortable fit makes it good both for relaxing after a climb, and for recreation and the city.

REGULAR FIT / BREATHABLE / ORGANIC

„V“ NECK OPENING / RAW EDGE NECK / PATCHED POCKET

SIZE: 34-42

WEIGHT: [36] 160 G

CENTRAL BACK LENGTH: [36] 88 CM



Folkstone Gray/ dark navy

10020053RFX

Sugar Coral/ sulphur

10020054RFX







# KARIN

96% VISCOSE + 4% ELASTANE



CLIMBING  
BOULDERING  
MULTISPORT  
LIFESTYLE

PRODUCT VIDEO  
click or scan



LIKE ♥♥♥

WOMEN STYLISH SOFT SHORT SLEEVE TEE

You'll quickly grow fond of the trendy Karin T-shirt as it is made of breathable and soft material. The combination of viscose and elastane keeps you cool, which is exactly what you need to turn up the heat. The attractive all-over print with restrained feminine motives will definitely catch everybody's eye.

REGULAR FIT / BREATHABLE COMFORTABLY DRY FABRIC / DOES NOT TRAP BODY HEAT  
NATURAL TOUCH / FULL AREA PRINT

SIZE: 34-42

WEIGHT: [36] 160 G

CENTRAL BACK LENGTH: [36] 61 CM



illustrative picture  
original pattern per each piece of garment



Abask  
(w/ Insignia blue)  
10020019RFX



Divoc  
(w/ Insignia blue)  
10020020RFX







# SEPHIRA

96% VISCOSE + 4% ELASTANE



CLIMBING

BOULDERING

MULTISPORT

LIFESTYLE

LIKE ♥♥♥

## WOMEN STYLISH SOFT LONG SLEEVE TEE

The function women's long-sleeved T-shirt is perfect whether you are going climbing or to the city. The pleasant combination of viscose and elastane is really soft and breathable and T-shirt cools you down. We bet you'll love the all-over print design with unicolour sleeves. When it gets cold for wearing a top, Sephira has your back (and arms)!

REGULAR FIT / BREATHABLE COMFORTABLY DRY FABRIC / DOES NOT TRAP BODY HEAT  
NATURAL TOUCH / FULL AREA PRINT

SIZE: 34-42

WEIGHT: [36] 216 G

CENTRAL BACK LENGTH: [36] 61 CM



illustrative picture  
original pattern per each piece of garment



Abask  
(w/ Insignia blue)  
10020063RFX



Divoc  
(w/ Insignia blue)  
10020064RFX





# SANTANA

96% VISCOSE + 4% ELASTANE



CLIMBING

BOULDERING

MULTISPORT

LIFESTYLE

PRODUCT VIDEO  
click or scan



LIKE ♥♥♥

## WOMEN'S STYLISH LONG SKIRT CONVERTIBLE TO DRESS

This is definitely the most useful 2in1 product you will get this summer. In the morning, you put on a long skirt. Need a change in the afternoon? Pull the skirt up, rotate it 90°, tie up the strings as a neck strap and you get a perfect knee-length dress. The pleasant combination of viscose and elastane is breathable and light.

REGULAR FIT / BREATHABLE COMFORTABLY DRY FABRIC / DOES NOT TRAP BODY HEAT  
NATURAL TOUCH / FULL AREA PRINT

SIZE: 34-42

WEIGHT: [36] 420 G

SIDE SEAM LENGTH: [36] 82 CM



Abask  
(w/ Insignia blue)  
10020058RFX



Divoc  
(w/ Insignia blue)  
10020059RFX



illustrative picture  
original pattern per each piece of garment









# ESTRELLA

NEW

92% ORGANIC COTTON + 8% ELASTANE



CLIMBING

BOULDERING

MULTISPORT

LIFESTYLE

PRODUCT VIDEO  
click or scan



LIKE ♥♥♥

## WOMEN'S LIGHTWEIGHT WARMUP ORGANIC HOODY

The Estrella is a light and breathable sweatshirt made from organic cotton that is easy to climb in. The use of elastane keeps it sufficiently flexible. It's a good choice for both warm-ups and warming up after a climb. The fine-tuned thumb loop will never cut into you or pull at you. This item is a good wear for yoga or a climb on the cliffs or boulders. The high-contrast hood and strings make this sweatshirt one superby attractive item.

REGULAR FIT / BREATHABLE / LIGHTWEIGHT / STRETCH / ORGANIC  
HOOD ADJUSTMENT / THUMB LOOP / DISTINCT RAFIKI SIGN

SIZE: 34-42

WEIGHT: [36] ??? G

CENTRAL BACK LENGTH: [36] 66 CM



Sugar coral/folkstone

10020006RFX

Folkstone gray/insignia

10020005RFX

Dark navy/rose

10020004RFX



# VELLA

CLIMBING  
BOULDERING  
MULTISPORT  
LIFESTYLE

PRODUCT VIDEO  
click or scan



94% POLYAMIDE + 6% ELASTANE  
88% POLYESTER + 12% SPANDEX (WAISTBAND CUFF)

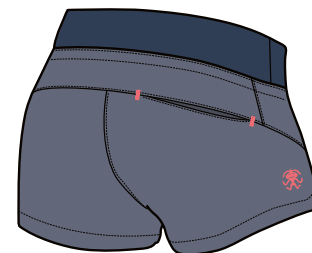
LIKE ♥♥♥

WOMEN'S SUPER LIGHTWEIGHT MULTISPORT SHORTS

Rafiki Vella are light women's sports shorts designed not only for bouldering. They fit perfectly thanks to the elastic material and wide elastic waist which means you are not limited in any way.

STRAIGHT FIT / BREATHABLE / LIGHTWEIGHT / QUICK DRY / STRETCH  
WIDE ELASTIC WAISTBELT WITH DRAWSTRING REGULATION / 1 REAR POCKET  
SPLIT DETAIL AT SIDE SEAM

SIZE: 34-40  
WEIGHT: [36] 100 G  
OUTSIDE LENGTH: [36] 31 CM including waist belt 7 CM



Chrysanthemum  
(with Insignia blue)

10020087RFX

Columbia  
(with Dark gray)

10020085RFX

Folkstone gray  
(with Insignia blue)

10020086RFX

Dark navy  
(with Dark gray)

10003407RFF





# MANDREA NEW

CLIMBING  
BOULDERING  
MULTISPORT  
LIFESTYLE

PRODUCT VIDEO  
click or scan



94% POLYAMIDE + 6% ELASTANE  
88% POLYESTER + 12% SPANDEX (WAISTBAND CUFF)

LIKE ♥♥♥

## WOMEN'S SUPER LIGHTWEIGHT MULTISPORT SKORT

The practical sport skirt with shorts inside for every woman who loves bouldering. Breathable, quick-drying, light and flexible – everything you want for it. The wide waist cuff holds this skirt in place so a climber can do everything she loves with maximum freedom of motion. An interior thigh pocket provides a place for small items like keys and a phone. This great-looking skort should be there in every backpack.

STRAIGHT FIT / BREATHABLE / LIGHTWEIGHT / QUICK DRY / STRETCH  
WIDE ELASTIC WAISTBELT / INTEGRATED SHORTS / SECRET THIGH POCKET

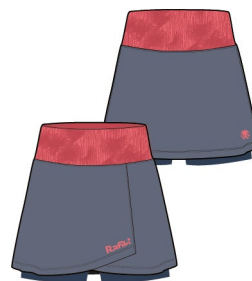
SIZE: 34-42  
WEIGHT: [36] 180 G  
OUTSIDE LENGTH: [36] 51 CM including waist belt 14 CM



Chrysanthemum  
(with Sugar coral)  
10020027RFX



Columbia  
(with Dark gray)  
10020024RFX



Folkstone gray  
(with Sugar coral)  
10020026RFX



Dark navy  
(with Dark gray)  
10020025RFX





# TARRAGONA

CLIMBING  
BOULDERING  
MULTISPORT  
LIFESTYLE

PRODUCT VIDEO  
click or scan



94% POLYAMIDE + 6% ELASTANE  
88% POLYESTER + 12% SPANDEX (WAISTBAND CUFF)

LIKE ♥♥♥

## WOMEN'S SUPER LIGHTWEIGHT MULTISPORT CAPRI PANTS

The women's ¾ Tarragona trousers will catch your attention at first sight. We've used an ultra-light material which is breathable and quick-drying. Whether you prefer climbing, bouldering or yoga, you'll grow fond of their comfortable fit with set-in gores which won't restrict any movement. A wide elastic waist keeps the trousers at place even when you eat a tortilla more then you should. So, hasta la vista!

STRAIGHT FIT / BREATHABLE / LIGHTWEIGHT / QUICK DRY / STRETCH  
WIDE ELASTIC WAISTBELT WITH DRAWSTRING REGULATION / 2 HAND POCKETS + 1 REAR POCKET  
GUSSET FOR FREEDOM OF MOVEMENT / LOW LEGS HALF CUFF / PRE-SHAPED KNEES

SIZE: 34-42  
WEIGHT: [36] 170 G  
INSEAM LENGTH: [36] 49 CM



Chrysanthemum  
(with Insignia blue)

10020078RFX



Columbia  
(with Dark gray)

10020075RFX



Folkstone gray  
(with Insignia blue)

10020077RFX



Dark navy  
(with Dark gray)

10020076RFX





# FEMIO

CLIMBING  
BOULDERING  
MULTISPORT  
LIFESTYLE

PRODUCT VIDEO  
click or scan



94% POLYAMIDE + 6% ELASTANE  
88% POLYESTER + 12% SPANDEX (WAISTBAND CUFF)

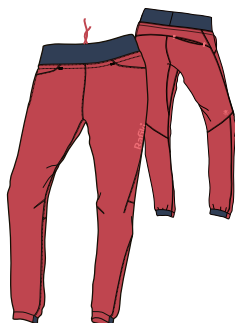
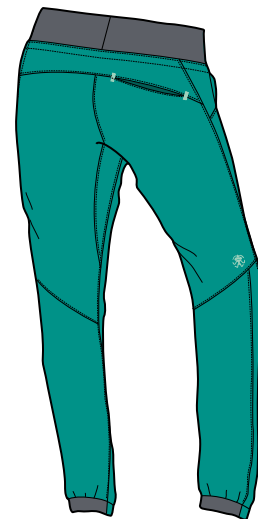
LIKE ♥♥♥

## WOMEN'S SUPER LIGHTWEIGHT MULTISPORT PANTS

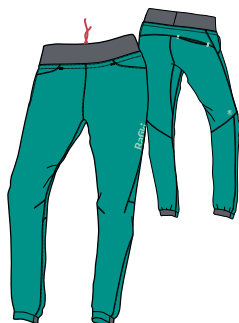
Rafiki Femio are light climbing trousers from new durable and quick-drying material. Thanks to the elastic waist and leg endings they fit all types of body shapes. They are designed for all kinds of climbing both indoor and outdoor or you can pack them up with you whether you go to a slackline park or a yoga lesson.

STRAIGHT FIT / BREATHABLE / LIGHTWEIGHT / QUICK DRY / STRETCH  
WIDE ELASTIC WAISTBELT WITH DRAWSTRING REGULATION / 2 HAND POCKETS + 1 REAR POCKET  
GUSSET FOR FREEDOM OF MOVEMENT / LOW LEGS HALF CUFF / PRE-SHAPED KNEES

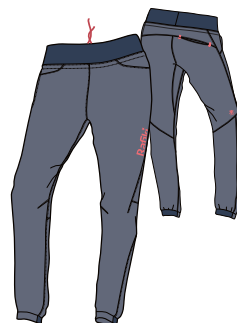
SIZE: 34-42  
WEIGHT: [36] 220 G  
INSEAM LENGTH: [36] 80 CM



Chrysanthemum  
(with Insignia blue)  
10020009RFX



Columbia  
(with Dark gray)  
10020007RFX



Folkstone gray  
(with Insignia blue)  
10020008RFX



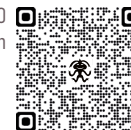
Dark navy  
(with Dark gray)  
10003426RFF



# MURIEL NEW

CLIMBING  
BOULDERING  
MULTISPORT  
LIFESTYLE

PRODUCT VIDEO  
click or scan



97% COTTON + 3% ELASTANE  
88% POLYESTER + 12% SPUDEX (WAISTBAND CUFF)

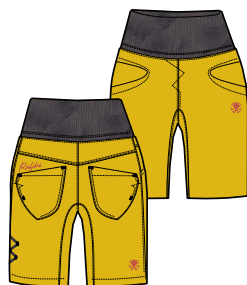
LIKE ♥♥♥

## WOMEN'S SOLID PERFORMANCE CLIMBING SHORTS

These are women's climbing shorts with a subdued look. Their pleasant, breathable material, wide waist cuff and diamond crotch for maximum range of motion all guarantee that in these shorts, you'll feel great both during training and on an actual climb. The Muriel's brush loops are an interesting frill.

STRAIGHT FIT / BREATHABLE / DURABLE / STRETCH  
2 FRONT + 2 REAR POCKETS / GUSSET FOR FREEDOM OF MOVEMENT / PRE-SHAPED KNEE  
WIDE CONVERTIBLE ELASTIC WAISTBELT WITH REGULATION / ELASTIC BACK LOW LEG

SIZE: 34-42  
WEIGHT: [36] 215 G  
INSEAM LENGTH: [36] 24 CM



Sulphur  
(with Dark gray)

10020042RFX



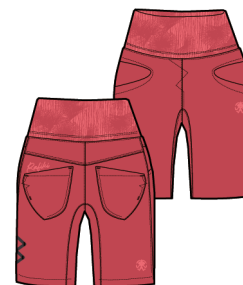
Columbia  
(with Sugar coral)

10020039RFX



Dark navy  
(with Dark gray)

10020040RFX



Chrysanthemum  
(with Sugar coral)

10020041RFX





# ALARÓ II NEW

97% COTTON + 3% ELASTANE

CLIMBING  
BOULDERING  
MULTISPORT  
LIFESTYLE

PRODUCT VIDEO  
click or scan



LIKE ♥♥♥

## WOMEN'S COMFORTABLE SUMMER COTTON SHORTS

You can wear the pleasant women's Alaró shorts whether you are going out to meet friends or bouldering. Thanks to their regular look, you don't have to be worried about putting them on when going to the city but at the same time, their comfortable fit lets you finally try the boulder you pass by way too often. Added gusset provides unlimited freedom of movement.

STRAIGHT FIT / BREATHABLE / DURABLE / STRETCH / YKK  
FLY OPENING / 2 FRONT + 2 REAR POCKETS / WAISTBELT LOOPS  
GUSSET FOR FREEDOM OF MOVEMENT / PARTLY ELASTIC WAISTBELT

SIZE: 34-42

WEIGHT: [36] 230 G

INSEAM LENGTH: [36] 25 CM



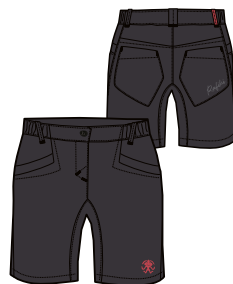
Deco Rose

10019986RFX



Elephant Skin

10019987RFX



Dark navy

10019985RFX



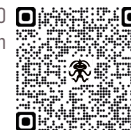




# MASSONE NEW

CLIMBING  
BOULDERING  
MULTISPORT  
LIFESTYLE

PRODUCT VIDEO  
click or scan



97% COTTON + 3% ELASTANE  
88% POLYESTER + 12% SPANDEX (WAISTBAND CUFF)

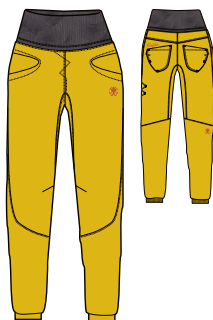
LIKE ♥♥♥

## WOMEN'S SOLID PERFORMANCE CLIMBING PANTS

These trousers are subdued, breathable and resilient. Their narrowed fit is very comfortable, in part due to the flexible material used. They're just about made for climbing. Naturally they include features like a wide and comfortable waist cuff, a diamond crotch, shaped knees and low legs with elastic in the back. What more could you wish for out on the rocks? Their loops for holding a large or small brush are an attractive element as well.

STRAIGHT FIT / BREATHABLE / DURABLE / STRETCH  
2 FRONT + 2 REAR POCKETS / GUSSET FOR FREEDOM OF MOVEMENT / PRE-SHAPED KNEE  
WIDE CONVERTIBLE ELASTIC WAISTBELT WITH REGULATION / ELASTIC BACK LOW LEG

SIZE: 34-42  
WEIGHT: [36] 315 G  
INSEAM LENGTH: [36] 80 CM



Sulphur  
(with Dark gray)

10020031RFX



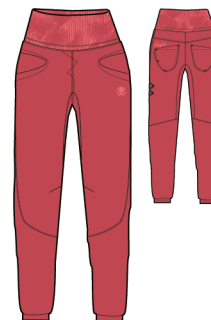
Columbia  
(with Sugar coral)

10020028RFX



Dark navy  
(with Dark gray)

10020029RFX



Chrysanthemum  
(with Sugar coral)

10020030RFX



# SELLA II NEW

97% COTTON + 3% ELASTANE

CLIMBING  
BOULDERING  
MULTISPORT  
LIFESTYLE

PRODUCT VIDEO  
click or scan



LIKE ♥♥♥

## WOMEN'S COMFORTABLE SUMMER COTTON PANTS

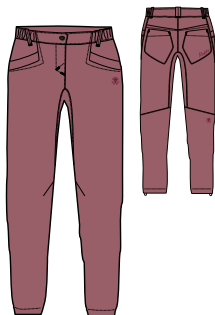
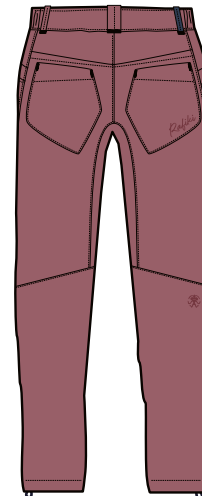
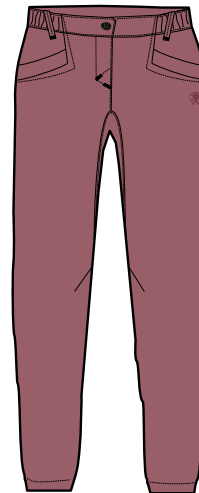
You can wear the pleasant women's Alaró shorts whether you are going out to meet friends or bouldering. Thanks to their regular look, you don't have to be worried about putting them on when going to the city but at the same time, their comfortable fit lets you finally try the boulder you pass by way too often. Added gusset provides unlimited freedom of movement.

STRAIGHT FIT / BREATHABLE / DURABLE / STRETCH / YKK  
FLY OPENING / 2 FRONT + 2 REAR POCKETS / PARTLY ELASTIC WAISTBELT / WAISTBELT LOOPS  
GUSSET FOR FREEDOM OF MOVEMENT / LOW HEM WITH REGULATION

SIZE: 34-42

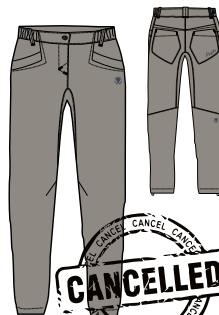
WEIGHT: [36] 340 G

INSEAM LENGTH: [36] 82 CM



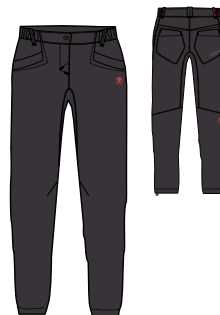
Deco Rose

10020061RFX



Elephant Skin

10020062RFX



Dark navy

10020060RFX





# CHAIN CAPRI

NEW

CLIMBING

BOULDERING

MULTISPORT

LIFESTYLE

PRODUCT VIDEO  
click or scan



64,5% COTTON + 29,5% POLYESTER + 3,5% RAYON + 2,5% ELASTANE  
88% POLYESTER + 12% ELASTANE

LIKE ♥♥♥

## WOMEN'S LIGHTWEIGHT DENIM CLIMBING CAPRI PANTS

They have a look that blends in and lets you wear them equally well out to the cliffs and boulders or into the city. They're made from an ultra-light denim that's flexible, breathable and quick-drying. The wide waist cuff on these trousers makes them a good fit, and their diamond crotch lets you move freely. With their doubled shaped knees, you can lean onto a rough cliff face problem-free. Their leg cuffs are elastic in back. Their decorative brush loop is another attractive detail.

STRAIGHT FIT / BREATHABLE / LIGHTWEIGHT / STRETCH / QUICKDRY  
DOUBLE KNEE PARTS / 2 FRONT AND 2 REAR POCKETS / GUSSET FOR FREEDOM OF MOVEMENT  
EWIDE ELASTIC WAISTBELT / ELASTIC BACK LOW LEG

SIZE: 34-42

WEIGHT: [36] 335 G

INSEAM LENGTH: [36] 80 CM



Denim  
(with Dark gray)

10020010RFX







# CHAIN NEW

CLIMBING

BOULDERING

MULTISPORT

LIFESTYLE

PRODUCT VIDEO  
click or scan



64,5% COTTON + 29,5% POLYESTER + 3,5% RAYON + 2,5% ELASTANE  
88% POLYESTER + 12% ELASTANE

LIKE ♥♥♥

## WOMEN'S LIGHTWEIGHT DENIM CLIMBING PANTS

The trousers look fine on the street, yet they're also an ideal partner on the rocks. Their ultra-light denim is flexible, breathable and quick-drying. The fairly wide waist cuff ensure these trousers are a good fit. Their diamond crotch won't limit your motion and doubled shaped knees can deal with even rough treatment on the rocks. The bottom cuff is partially elastic in the back, so from the front, these trousers look like normal skinny jeans. One more attractive detail is the brush pocket that acts as a frill in its own right.

STRAIGHT FIT / BREATHABLE / LIGHTWEIGHT / STRETCH / QUICKDRY  
DOUBLE KNEE PARTS / 2 FRONT AND 2 REAR POCKETS / GUSSET FOR FREEDOM OF MOVEMENT  
EWIDE ELASTIC WAISTBELT / ELASTIC BACK LOW LEG

SIZE: 34-42  
WEIGHT: [36] 405 G  
INSEAM LENGTH: [36] 87 CM



Denim  
(with Dark gray)

10020011RFX





# MARTINA DEMMEL

@martinademmel

A 19-year-old German climber Martina Demmel was competing in skiing until she was 15, then she found a new passion in climbing. In just 4 years she has developed her climbing skills so masterfully she was able to redpoint Joe Cita 9a (Oliana, Spain) in just five attempts.

In the last year, she spent 218 days on climbing trips and climbed more than 200 routes in eight French grade, 30 of them even onsight.

**How does your climbing benefit from your previous skiing career? E.g. better endurance, core strength or less stress during competitions?**

On the physical side, I haven't really noticed any benefits, maybe just that my body could adapt quicker to this new activity without getting injured. Mentally, I'd say, it helped me a lot because rock climbing is pretty similar to ski races as there is always the pressure of performing on point at the first attempt, dealing with mistakes and failure, being in the moment and acting intuitively, but also

visualising the moves and the course. One little mistake probably doesn't mean you will fail directly but you will always lose a bit of power or seconds. So truly feeling your body and finding the perfect flow is the key for success in both sports.

**Do you prefer endurance routes or powerful moves?**

I love the mix of both. The best would be to have all styles in one route because then you really have to be a complete climber. If this isn't possible, I prefer switching areas and routes to keep up

the motivation and also keep on improving my weak points.

**What do you enjoy more – working on a harder project or onsighting an (slightly) easier one?**

At the moment, I prefer climbing lots of different routes which aren't that much at my limit because there are so many climbs out there I want to climb someday, so for me it's hard to invest a lot of time into just one single route. Maybe the patience for that is coming in the future, who knows.

**Do you apply hard training routine, or does your climbing evolve naturally just from outside climbing?**

Until now, I have only been climbing on rock which was the best and especially most fun training for me because it doesn't really feel like training, it's rather doing what I love. I can't really imagine myself repeating the same exercise over and over again but maybe this will change in the future when I want to start training more specifically to push my limits.

**What do you want to focus on in the future? Do you want to train for even harder routes or climbing competitions?**

I'm sure my main focus will always be on rock climbing because being outdoors in the nature with friends and discovering new places and cultures is what I enjoy most. But I still want to get some experience in comp climbing this year because I love the challenge of performing in this one moment on point and in the end, it also keeps up the motivation for both and also helps improving on the rock as well.

*Foto: Jan Novák*

# RAFIKI AMBASSADOR









# RAFIKI MEN







# PINCH NEW

50% ORGANIC COTTON + 50% LENZING MODAL



CLIMBING  
BOULDERING  
MULTISPORT  
LIFESTYLE

LIKE ♥♥♥

## MEN'S PERFORMANCE LIGHTWEIGHT SINGLET

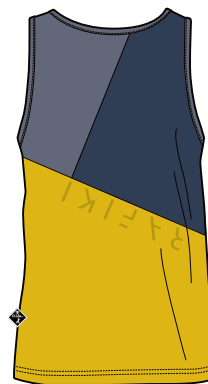
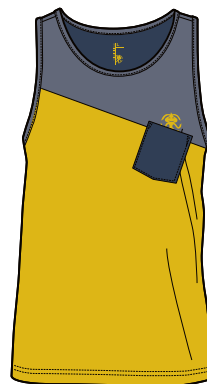
The Pinch is a men's climbing singlet in attractive colours that's ideal for the cliffs, boulders and climbing walls. The combination of organic cotton and Lenzing Modal will ensure you feel comfortable in this singlet. The Pinch is breathable and good at expelling moisture. Its material is also soft and pleasant to the touch.

STRAIGHT FIT / BREATHABLE / ORGANIC  
MOISTURE WICKING

SIZE: S-XL

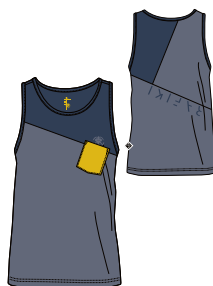
WEIGHT: [M] 105 G

CENTRAL BACK LENGTH: [M] 65 CM



Columbia/insignia

10020049RFX



Folkstone gray/insignia

10020050RFX



Sulphur/folkstone

10020051RFX



# CLIP

NEW

50% ORGANIC COTTON + 50% LENZING MODAL



CLIMBING  
BOULDERING  
MULTISPORT  
LIFESTYLE

LIKE ♥♥♥

## MEN'S PERFORMANCE LIGHTWEIGHT SHORT SLEEVE TEE

A men's functional climbing tee. This tee is soft and breathable, and its organic cotton with Lenzing Modal is great at wicking away moisture. Its impressive arrangement and attractive colours make it unmistakable in a crowd. This is definitely one item in which a climber will look great while feeling great too.

STRAIGHT FIT / BREATHABLE / ORGANIC  
MOISTURE WICKING

SIZE: S-XL

WEIGHT: [M] 135 G

CENTRAL BACK LENGTH: [M] 69 CM



Columbia/insignia

10019990RFX



Folkstone gray/insignia

10019991RFX



Sulphur/folkstone

10019992RFX





# SLACK

100% ORGANIC COTTON [ SINGLE JERSEY 160 ]



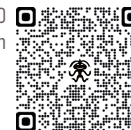
CLIMBING

BOULDERING

MULTISPORT

LIFESTYLE

PRODUCT VIDEO  
click or scan



LIKE ♥♥♥

## MEN'S ORGANIC SHORT SLEEVE TEE

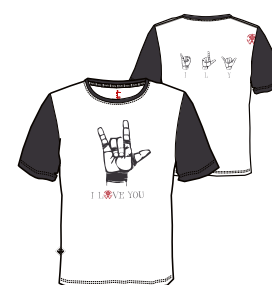
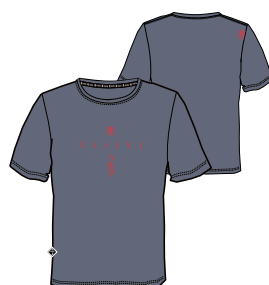
Comfortable leisure time T-shirt from organic cotton from climbing brand Rafiki. With Slack you will feel good and trendy, either on the rocks, or at school lectures or when just having fun with friends climbing over boulder walls.

REGULAR FIT / BREATHABLE / ORGANIC  
PRINTS VARIATION

SIZE: XS-XXL

WEIGHT: [M] 165 G

CENTRAL BACK LENGTH: [M] 69 CM



Lemon curry II

10020071RFX

Folkstone gray

10020070RFX

Columbia

10020068RFX

Dark navy (high five)

10020069RFX

Bright white/navy

10020067RFX

61 | men

...







# SLACK PRINT

100% ORGANIC COTTON [ single jersey 160 ]



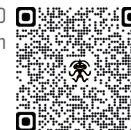
CLIMBING

BOULDERING

MULTISPORT

LIFESTYLE

PRODUCT VIDEO  
click or scan



LIKE ♥♥♥

## MEN'S ORGANIC PRINTED SS TEE

Rafiki Slack Print is an all-over print variant of the classic Slack T-shirt. It looks very interesting and if you want to be original in the mountains or on a climbing wall, it is a must-have! Pleasant organic cotton and a time-proven fit guarantee you will feel great on any occasion.

REGULAR FIT / BREATHABLE / ORGANIC  
FULL AREA PRINTING

SIZE: S-XL

WEIGHT: [M] 165 G

CENTRAL BACK LENGTH: [M] 69 CM



Sugar coral

10020066RFX

Folkstone gray

10020065RFX



# PITON NEW

CLIMBING  
BOULDERING  
MULTISPORT  
LIFESTYLE

PRODUCT VIDEO  
click or scan



82% RECYCLED POLYESTER + 14% TENCEL + 4% ELASTANE

LIKE ♥♥♥

## MEN'S PERFORMANCE LIGHTWEIGHT PRINTED SS TEE

This is a unique new tee from Rafiki for next year that stands out in its choice of material and in the attractive climbing-themed print all across its surface. This tee uses a functional combination of recycled polyester and Tencel. Thanks to this, it expels water wonderfully, cools you pleasantly and feels like natural fibre under your fingers. You'll appreciate this tee both when you're climbing and as everyday wear.

REGULAR FIT / WICKING / BREATHABLE / LIGHTWEIGHT / SUSTAINABLE

SIZE: S-XL

WEIGHT: [M] 145 G

CENTRAL BACK LENGTH: [M] 69 CM



Highfive

10020052RFX





# TRAVERSE NEW

92% ORGANIC COTTON + 8% ELASTANE



CLIMBING  
BOULDERING  
MULTISPORT  
LIFESTYLE

PRODUCT VIDEO  
click or scan



LIKE ♥♥♥

## MEN'S LIGHTWEIGHT WARMUP ORGANIC HOODY

Climbers will most appreciate this light and breathable sweatshirt made from organic cotton during warmup exercises or while warming back up after a climb. But you can also climb in it, and the use of elastane keeps it sufficiently flexible. The high-contrast hood and drawstrings immediately hint at the original Rafiki style.

REGULAR FIT / BREATHABLE / LIGHTWEIGHT / STRETCH / ORGANIC  
HOOD ADJUSTMENT / THUMB LOOP / DISTINCT RAFIKI SIGN

SIZE: XS-XXL

WEIGHT: [M] 370 G

CENTRAL BACK LENGTH: [M] 78 CM



Folkstone gray/  
dark navy  
10020083RFX



Insignia blue/  
folkstone  
10020084RFX



Dark navy/rose  
10020082RFX



Dark navy/lemon  
10020287RFX







# LEAD

CLIMBING  
BOULDERING  
MULTISPORT  
LIFESTYLE

PRODUCT VIDEO  
click or scan



94% POLYAMIDE + 6% ELASTANE  
88% POLYESTER + 12% SPANDEX [ WAISTBAND ]

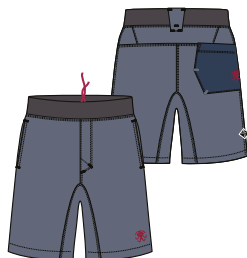
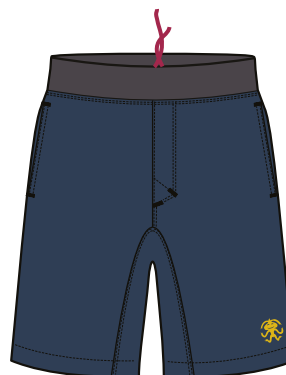
LIKE ♥♥♥

MEN'S MEN SUPER LIGHTWEIGHT MULTISPORT SHORTS

Rafiki Megos are men's climbing shorts which are a must-have for all bouldering enthusiasts. Cotton with elastane, the elastic waist and a time-proven fit guarantee you can fully rely on these shorts whatever you do.

REGULAR FIT / BREATHABLE / LIGHTWEIGHT / QUICK DRY / STRETCH  
ELASTIC WAISTBELT WITH DRAWSTRING REGULATION / 2 SIDE POCKETS + 1 REAR POCKET  
FULL INSEAM GUSSET FOR FREEDOM OF MOVEMENT

SIZE: XS-XL  
WEIGHT: [M] 180 G  
INSEAM LENGTH: [M] 31 CM



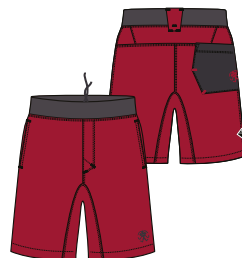
Folkstone gray  
(with Insignia blue)

10020022RFX



Insignia blue  
(with Jester red)

10011057RFX01



Jester red/navy

10020023RFX



Dark navy/jester

10020021RFX







# MOONSTONE

94% POLYAMIDE + 6% ELASTANE

LIKE ♥♥♥

## MEN SUPER LIGHTWEIGHT MULTISPORT 3/4 PANTS

Rafiki Moonstone are light and airy ¾ climbing trousers with the elastic waist which are ideal for those who prefer ¾ trousers for climbing. They have a small pocket and a loop for a brush, a chalk bag hanging loop and a waist and leg endings drawstrings.

STRAIGHT FIT / BREATHABLE / LIGHTWEIGHT / QUICK DRY / STRETCH  
ELASTIC WAISTBELT WITH DRAWSTRING REGULATION / 2 SIDE POCKETS + 1 REAR POCKET  
FULL INSEAM GUSSET FOR FREEDOM OF MOVEMENT

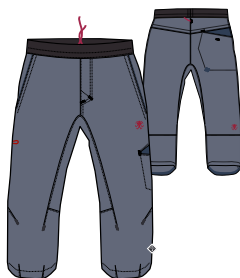
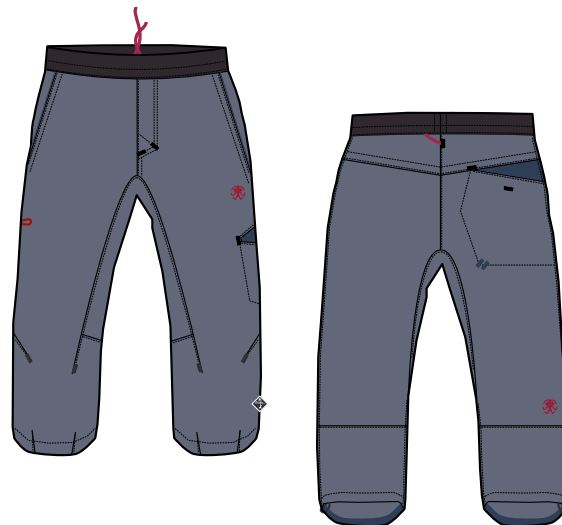
SIZE: XS-XL

WEIGHT: [M] 220 G

INSEAM LENGTH: [M] 47 CM

CLIMBING  
BOULDERING  
MULTISPORT  
LIFESTYLE

PRODUCT VIDEO  
click or scan



Folkstone gray  
(with Insignia blue)

10020037RFX



Insignia blue  
(with Jester red)

10011380RFX01



Jester red/navy

10020038RFX



Dark navy/jester

10020036RFX





# DRIVE

94% POLYAMIDE + 6% ELASTANE

LIKE ♥♥♥

## MEN'S SUPER LIGHTWEIGHT MULTISPORT PANTS

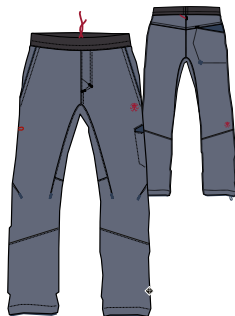
Rafiki Drive are light and airy climbing trousers with the elastic waist which are ideal for rope climbing, indoor bouldering or yoga. They have a small pocket and a loop for a brush, a chalk bag hanging loop and a waist drawstring.

STRAIGHT FIT / BREATHABLE / LIGHTWEIGHT / QUICK DRY / STRETCH  
ELASTIC WAISTBELT WITH DRAWSTRING REGULATION / 2 HAND POCKETS + 1 REAR POCKET  
GUSSET FOR FREEDOM OF MOVEMENT / LOW HEM ADJUSTMENT / PRE-SHAPED KNEES

SIZE: XS-XL  
WEIGHT: [M] 265 G  
INSEAM LENGTH: [M] 82 CM

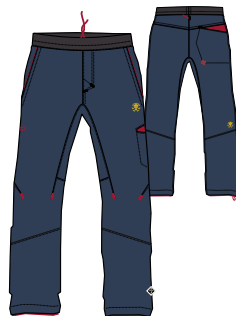
CLIMBING  
BOULDERING  
MULTISPORT  
LIFESTYLE

PRODUCT VIDEO  
click or scan



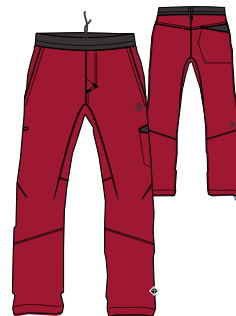
Folkstone gray  
(with Insignia blue)

10020002RFX



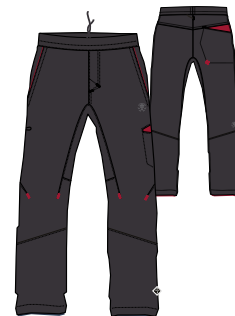
Insignia blue  
(with Jester red)

10011074RFX01



Jester red/navy

10020038RFX



Dark navy/jester

10020001RFX





# MEGOS

97% COTTON + 3% ELASTANE

LIKE ♥♥♥

MEN'S SOLID PERFORMANCE CLIMBING SHORTS FOR ALL-DAY COMFORT

Rafiki Megos are men's climbing shorts which are a must-have for all bouldering enthusiasts. Cotton with elastane, the elastic waist and a time-proven fit guarantee you can fully rely on these shorts whatever you do.

REGULAR FIT / BREATHABLE / DURABLE / STRETCH

ELASTIC WAISTBELT WITH DRAWSTRING REGULATION / 2 TOP-ENTRY POCKETS WITH TOOTHBRUSH GARAGE  
FULL INSEAM GUSSET FOR FREEDOM OF MOVEMENT

SIZE: XS-XL

WEIGHT: [M] 225 G

INSEAM LENGTH: [M] 31 CM

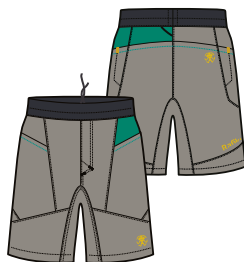
CLIMBING  
BOULDERING  
MULTISPORT  
LIFESTYLE

PRODUCT VIDEO  
click or scan



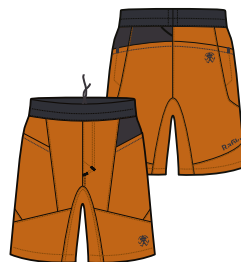
Viridis  
(with Insignia blue)

10020035RFX



Elephant skin  
(with Viridis)

10020033RFX



Marmalade  
(with Dark navy)

10020034RFX



Dark navy/elephant

10020032RFX





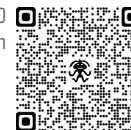


# CRUX

97% COTTON + 3% ELASTANE

CLIMBING  
BOULDERING  
MULTISPORT  
LIFESTYLE

PRODUCT VIDEO  
click or scan



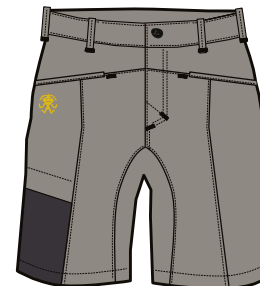
LIKE ♥♥♥

## MEN'S ALL-DAY COMFORT CLIMBING SHORTS

The men's low-key Crux shorts in restrained colours have a classic fly and can be easily combined with any T-shirt you like wearing to work. If you take a closer look, you'll notice many improvements that every passionate climber will love. They are made of a combination of cotton and elastane. This tougher and durable material with great tensile strength can withstand even rough handling. The shorts have four spacious pockets and the fifth one is specially designated for a toothbrush. It's cleverly hidden on a side, as a part of a main pocket.

REGULAR FIT / BREATHABLE / DURABLE / STRETCH / YKK  
FLY OPENING / 2 FRONT TOP-ENTRY POCKETS / 2 REAR POCKETS / THIGH POCKET  
GUSSET FOR FREEDOM OF MOVEMENT / PARTLY ELASTIC WAISTBELT WITH LOOPS AND REGULATION

SIZE: S-XXL  
WEIGHT: [M] 325 G  
INSEAM LENGTH: [M] 31 CM



Deco rose  
(with Dark navy)

10019998RFX

Sagebrush green  
(with Sulphur)

10011065RFX



Elephant skin  
(with Dark navy)

10019999RFX

Insignia blue

10011066RFX







# CLIFFBASE

97% COTTON + 3% ELASTANE

LIKE ♥♥♥

MEN'S COMFORTABLE CLIMBING 3/4 PANTS

Cliffbase are Rafiki's three-quarter shorts that will not balk at any climbing challenge. Cotton elastic shorts with elastic in the waist line are suitable not only on the sand or on the wall but also for everyday casual wear.

REGULAR FIT / BREATHABLE / DURABLE / STRETCH / YKK  
2 FRONT POCKETS / 1 REAR POCKET / GUSSET FOR FREEDOM OF MOVEMENT  
PARTLY ELASTIC WAISTBELT WITH REGULATION / VELCRO FLY OPENING

SIZE: XS-XL  
WEIGHT: [M] 280 G  
INSEAM LENGTH: [M] 47 CM

CLIMBING  
BOULDERING  
MULTISPORT  
LIFESTYLE

PRODUCT VIDEO  
click or scan



Elephant skin  
(with Viridis)

10019988RFX

Marmalade  
(with Dark navy)

10019989RFX

Insignia blue

10011074RFX







# Crag

97% COTTON + 3% ELASTANE

LIKE ♥♥♥

## MEN'S COMFORTABLE CLIMBING PANTS

They are function trousers you can wear all day long. The combination of cotton and elastane is firm but stretchy with double pre-shaped knees enhancing durability. Spacious front pockets can hold all your essentials, a tooth-brush pocket is a must-have and you can easily stow your phone into a little thigh side zip pocket which you can easily access even when sitting in a harness.

REGULAR FIT / BREATHABLE / DURABLE / STRETCH / YKK / FLY OPENING / DOUBLE KNEE PARTS  
2 FRONT TOP-ENTRY POCKETS / THIGH ZIP POCKET / GUSSET FOR FREEDOM OF MOVEMENT  
ELASTIC WAISTBELT WITH LOOPS AND REGULATION

SIZE: S-XXL

WEIGHT: [M] 415 G

INSEAM LENGTH: [M] 83 CM

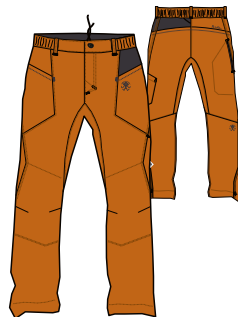
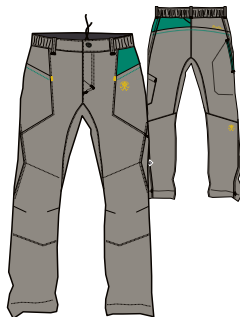
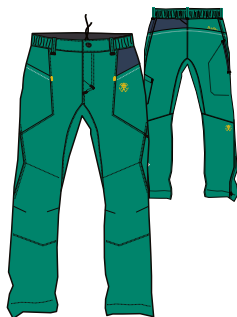
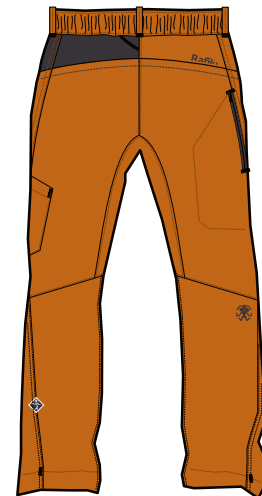
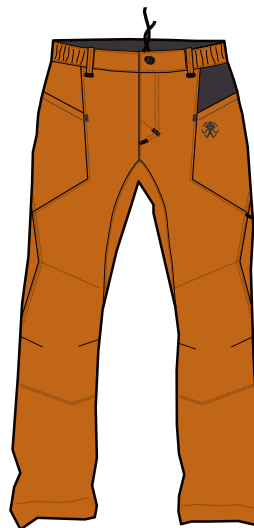
CLIMBING

BOULDERING

MULTISPORT

LIFESTYLE

PRODUCT VIDEO  
click or scan



Viridis  
(with Insignia blue)

10019996RFX

Elephant skin  
(with Viridis)

10019993RFX

Marmalade  
(with Dark navy)

10019995RFX

Insignia blue/viridis

10019994RFX



# CRIMP

NEW

CLIMBING

BOULDERING

MULTISPORT

LIFESTYLE

PRODUCT VIDEO  
click or scan



64,5% COTTON + 29,5% POLYESTER + 3,5% RAYON + 2,5% ELASTANE

LIKE ♥♥♥

## MEN'S LIGHTWEIGHT DENIM CLIMBING PANTS

These jeans are literally indistinguishable from traditional work trousers. They have an elastic waist, but you'll find belt loops as well. Their diamond crotch and shaped knees guarantee a climber won't have to fear any awkward steps along their way. Naturally a discreet brush pocket is included too. These trousers are deliberately extended in length and can be either rolled up or shortened as needed using the markings we've provided. This immediately eliminates the problem of overly long trouser legs.

STRAIGHT FIT / BREATHABLE / LIGHTWEIGHT / STRETCH / QUICKDRY / YKK  
FLY OPENING / DOUBLE KNEE PARTS / 2 FRONT AND 2 REAR POCKETS / GUSSET FOR FREEDOM OF MOVEMENT  
ELASTIC WAISTBELT WITH LOOPS AND REGULATION / CUTTABLE LEG LENGTH

SIZE: S-XXL

WEIGHT: [M] 405 G

INSEAM LENGTH: [M] 87 CM



Denim

10019997RFX





# ŠTĚPÁN VOLF

@climbingwolf

Czech Climber

9a route | 8B boulder

Let's go straight to your biggest rope climbing success this year so far. What route was it and how long did it take?

Estado Critico, a 40-metre endurance overhang wall in Siurana, Spain. I spent there about 12 climbing days and 30 tries + one exploratory try one year ago.

You have mentioned earlier your dream is to rope climb a 9a and to climb an 8C boulder. Two questions come to mind: Are you done rope climbing after that? And what 8C boulder have you chosen?

*Note: Štěpán has climbed up several 8B boulders in Kras*

I am definitely not done rope climbing!!! One dream has come true so it's time to set a new one. Even if I decided not to push my limits on the rope, it would be good to have another 9a. As an 8C boulder I have picked out a sit start





boulder called „Silák panoramix“ boulder. I have already done all the moves and this year I'm just waiting for the possibility to climb in "Staré Skály" again and I want to give it a proper try.

**Do you see practise and training as necessary nuisance you undergo to climb better or do you actually enjoy systematic preparation?**

Half and half. Training definitely isn't nuisance and it's more than sure it is necessary. In the past, all I enjoyed was training and I was really keen on it. However, I often trained too much, injured my body, which led to poor performance

and eventually I grew fed up with hard trainings. But now, after quite a long time, I'm finding my way back to it. Let's see where it takes me.

**What do you think of training methods of 80s` guys such as Wolfgang Güllich or Jerry Moffat? Or do you rather take inspiration from contemporary climbers?**

Of course, these "old school" guys have taught us a lot (maybe even more then the contemporary ones), but today it's easier to watch modern climbing elite and get instantly

motivated, which I see as a huge benefit.

**Are you currently thinking about any climbing projects that are not secret?**

There is one secret project which I can't talk more about until the climb is done. And apart from the project in Sloup there is The edge Problem in Maloměřice which is really tempting. The line is both beautiful and really hard.

***Foto: Jakub „Kony“ Konečný***

**RAFIKI** AMBASSADOR









The image features a lush green forest with tall, slender trees and dense foliage. A bright yellow diagonal shape cuts across the right side of the image, creating a modern, graphic design. The text 'RAFIKI KIDS' is written in white, bold, sans-serif capital letters on the yellow background. The word 'RAFIKI' is underlined with a thick white horizontal line.

# RAFIKI KIDS





# KAILAS JR

CLIMBING

BOULDERING

MULTISPORT

LIFESTYLE

100% ORGANIC COTTON [ SINGLE JERSEY 160 ]



LIKE ♥♥♥

## KID'S COMFORTABLE ORGANIC SHORT SLEEVE TEE

To fulfil their potential, boys and girls of the new climbing generation need a quality T-shirt with Rafiki Guy. This children's T-shirt is made of 100% bio cotton which is incredibly pleasant and light. A big Rafiki Guy front print will encourage your kids next time you take them climbing.

REGULAR FIT / BREATHABLE / ORGANIC

SIZE: 128, 134, 140, 146, 152

WEIGHT: 95 G [ size 152 ]

INSEAM LENGTH: 56 CM [ size 152 ]



Dark navy

10020288RFX



Sea pine

10012572RFX



Sugar coral

10020289RFX



Lemon curry

10020290RFX





# RUMNEY JR

CLIMBING  
BOULDERING  
MULTISPORT  
LIFESTYLE

97% COTTON + 3% ELASTANE

LIKE ♥♥♥

KID'S CLIMBING SHORTS FOR ALL-DAY COMFORT

Universal children's cotton shorts in waist with a distinctive back pocket, suitable for bouldering and rope climbing. Cut and material derived from popular adult shorts.

More color options for boys and girls.

REGULAR FIT / BREATHABLE / DURABLE / STRETCH

2 FRONT POCKETS / 1 REAR POCKET / FULL INSEAM GUSSET FOR FREEDOM OF MOVEMENT  
WIDE ELASTIC WAISTBELT

SIZE: 128, 134, 140, 146, 152

WEIGHT: 130 G [ size 152 ]

INSEAM LENGTH: 22 CM [ size 152 ]



Viridis  
(with Insignia blue)

10020102RFX



Chrysanthemum

10020100RFX



Insignia blue/sulphur

10020101RFX





# PEDRO JR

97% COTTON + 3% ELASTANE

LIKE ♥♥♥

## KID'S CLIMBING PANTS FOR ALL-DAY COMFORT

Trousers for every little climber or adventurer. Pleasant cotton material that does not restrict movement, something that lasts, for added comfort added a wide Rafiki rubber at the waist. More color options for boys.

REGULAR FIT / BREATHABLE / DURABLE / STRETCH

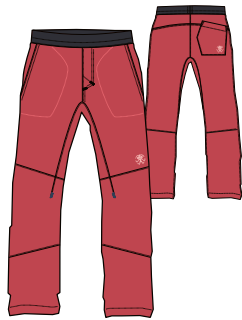
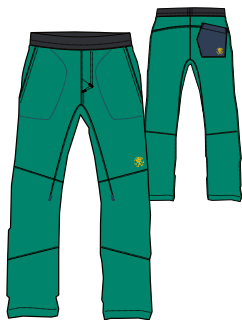
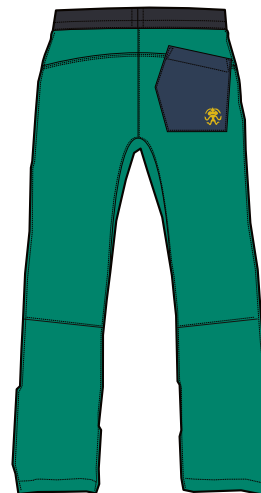
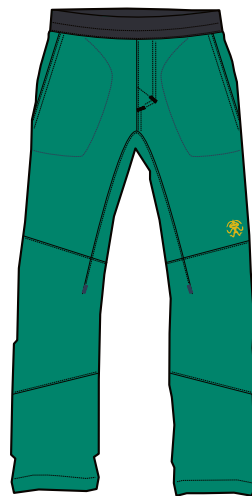
2 FRONT POCKETS / 1 REAR POCKET / FULL INSEAM GUSSET FOR FREEDOM OF MOVEMENT  
WIDE ELASTIC WAISTBELT / ERGONOMIC SHAPED KNEES

SIZE: 128, 134, 140, 146, 152

WEIGHT: 190 G [ size 152 ]

INSEAM LENGTH: 71 CM [ size 152 ]

CLIMBING  
BOULDERING  
MULTISPORT  
LIFESTYLE



Viridis  
(with Insignia blue)

10020099RFX

Chrysanthemum

10020097RFX

Insignia blue/sulphur

10020098RFX



# European Youth and Junior Championships 2021

A large group of 24 national team members went to represent the Czech Republic at this year's European Youth and Junior Climbing Championships, bringing a total of 6 medals, including two European Champion titles.



**Saša, as a national team coach, how do you evaluate such success?**

Bára Bernardová - 1st in B lead, Maki Janošová - 1st in A lead, 2nd in Olympic combination, Lukáš Mokroluský - 3rd in B lead, Míša Smetanová - 3rd in J lead, Arina Jurčenko 3rd in bouldering B.

It is a really exceptional result, our national team members in the youth categories have already had some success in the past, but it was always one or two medals at the most. Two European Champion titles and four other

medals - it really surprised us too, to be honest :)

**The Czech national team is therefore on a good way to taking top places in the races. What do you think is behind the success?**

It's hard to say, because we didn't work quite normally in Covid times. However, we managed to ensure the national team preparation and joint trainings, so we hope that this has also contributed to such success. Also, the national team had



a chance to train in newly established training centers, on quality racetracks or boulders - thanks to which the racers gained more confidence. Other factors are a little more systematically controlled training, a team that pulls together and great and smooth cooperation with builders, physiotherapists and coaches...

**The race was much more demanding not only for the organizers on site, but also for the entire Czech team of coaches, trainers and physiotherapists. How long did it take to prepare for the departure itself and were there any problems?**

Yes, we had probably never experienced anything like this - it was even more challenging than organization at the European Championships in Moscow, which took place in November 2020. Preparations had been going on since March and until the last moment we were not sure if or in what number we would eventually leave. The last straw was the political rift with Russia, which was graduating in the days of our departure. Maybe that's why it was such a big success [smile].

**Rafiki has been providing the Czech youth team with garments for a long time. Do the national team members like the clothing and what piece of the collection do you personally like best?**

The identical clothing is a very important part of the national team - it really increases the feeling of belonging to the team that represents the Czech Republic at international competitions. We want the members to be proud of wearing identical non-racing clothes and to like wearing them. I have to admit it is sometimes difficult to convince them to wear something that does not correspond to their fashion taste, it doesn't make the same sense to them as to us coaches [smile]. It probably

corresponds to our nature - we do not have much national pride in ourselves and some people still consider wearing identical clothes with the Czech Republic sign on them as a duty. Luckily, we have had the opportunity to wear Rafiki clothes for several years now. They are tasteful, comfortable to wear and I think the members and coaches are satisfied with them. Personally, I prefer cotton T-shirts with nice front print or a technical sweatshirt.

*The interview was given to us by Saša Gendová, coach of the Czech national team*

*Foto: Petr Chodura*











# **RAFIKI** WINTER





# MALHAM

85% ORGANIC COTTON + 15% POLYESTER

LIKE ♥♥♥

WOMEN ORGANIC HOODY

SIZE: 34-44

WEIGHT: 550 G [ size 36 ]

REGULAR FIT

ORGANIC / BREATHABLE / DURABLE

HOOD ADJUSTMENT / BIG CANGAROO POCKET

CLIMBING

BOULDERING

MULTISPORT

LIFESTYLE



Chrysanthemum  
(with Dark Navy)

10014926RFX

Dark navy  
(with Chrysanthemum)

10014925RFX





# LINYA

95% POLYESTER + 5% ELASTANE  
SINGLE GRID POLAR FLEECE

LIKE ♥♥♥

WOMEN TECHNICAL FULL-ZIP HOODY

SIZE: 34-42

WEIGHT: 345 g [ size 36 ]

STRAIGHT FIT

WARM / BREATHABLE / LIGHTWEIGHT / QUICK DRYING  
YKK ZIPPERS / 2-WAY MAIN ZIPPER / 2 ZIPPED MAIN POCKETS  
TAILORED HOOD WITH ELASTIC BINDING  
LOW HEM AND CUFFS WITH ELASTIC BINDING / SLEEVE CUFFS  
COMFORTABLE FIT THROUGH FLAT LOCK SEAMS

CLIMBING

BOULDERING

MULTISPORT

LIFESTYLE



Biking red  
(with Chrysanthemum)

10014922RFX

Outer space  
(with Chrysanthemum  
and Light Taupe)

10014924RFX

Light taupe  
(with Outer Space)

10014923RFX





# DARCY

CLIMBING  
BOULDERING  
MULTISPORT  
LIFESTYLE

SHELL: 100% NYLON RIPSTOP / WR FINISHING  
\*\*\* 100% POLYESTER RIPSTOP / WR FINISHING  
UNDERARM F.: 95% POLYESTER 5% ELASTANE  
LINING: 100% NYLON RIPSTOP  
INSULATION: 100% POLYESTER (SORONA SYNTHETIC DOWN)

LIKE ♥♥♥

WOMEN LIGHTWEIGHT INSULATED JACKET

SIZE: 34-42

WEIGHT: 505 G [ size 36 ]

STRAIGHT FIT

INSULATED / WATER-REPELENT / YKK ZIPPERS / 2-WAY MAIN ZIPPER  
WITH INTERNAL FULL-LENGTH WINDPROOF FLAP / 2 ZIPPED MAIN POCKETS  
CHEST ZIPPER POCKET / INSIDE MESH POCKETS / POLARSTRETCH UNDERARM PARTS  
LOW-HEM AND CUFFS WITH ELASTIC BINDING / FIXED HOOD WITH ELASTIC  
BINDING AND REGULATION / ERGONOMIC SHAPED SLEEVES / COMPRESSION BAG



Castlerock \*\*\*  
(with Chrysanthemum)  
10014918RFX

Chrysanthemum  
(with Citronelle)  
10014919RFX





# VIRAGE

100% COTTON  
YARN-DYED PLAID TWILL (185 GSM)

LIKE ♥♥♥

MEN LONG SLEEVE MIDWEIGHT FLANNEL SHIRT

SIZE: S-XXL  
WEIGHT: 485 G [size M]

REGULAR FIT

BREATHABLE / CHEST POCKETS WITH SINGLE-BUTTON FLAP CLOSURE  
HAND POCKETS / UNDERARM INSEAM GUSSET PANEL  
SLEEVE OPENING AND REGULATION

CLIMBING  
BOULDERING  
MULTISPORT  
LIFESTYLE



Taupe plaid

10014928RFX

Sagebrush plaid

10014927RFX







# CANMORE

85% ORGANIC COTTON + 15% POLYESTER

LIKE ♥♥♥

MEN ORGANIC HOODY

SIZE: S-XXL

WEIGHT: 620 g [ size M ]

REGULAR FIT

ORGANIC / BREATHABLE / DURABLE

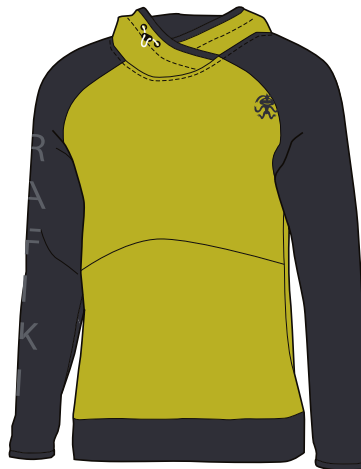
HOOD ADJUSTMENT / BIG CANGAROO POCKET

CLIMBING

BOULDERING

MULTISPORT

LIFESTYLE



Dark navy

10014915RFX

Citronelle  
(with Dark Navy)

10014914RFX





# ASCENT

CLIMBING  
BOULDERING  
MULTISPORT  
LIFESTYLE

95% POLYESTER + 5% ELASTANE  
SINGLE GRID POLAR FLEECE

LIKE ♥♥♥

MEN TECHNICAL FULL-ZIP HOODY

SIZE: XS-XXL

WEIGHT: 435 G [ size M ]

STRAIGHT FIT

WARM / BREATHABLE / LIGHTWEIGHT / QUICK DRYING  
YKK ZIPPERS / 2-WAY MAIN ZIPPER / 2 ZIPPED MAIN POCKETS  
TAILORED HOOD WITH ELASTIC BINDING  
LOW HEM AND CUFFS WITH ELASTIC BINDING / SLEEVE CUFFS  
COMFORTABLE FIT THROUGH FLAT LOCK SEAMS



Light taupe  
(with Outer Space)

10014912RFX

Biking red  
(with Outer Space)

10014911RFX

Outer space  
(with Biking Red and Light Taupe)

10014913RFX





# DANTE

CLIMBING

BOULDERING

MULTISPORT

LIFESTYLE

SHELL: 100% NYLON RIPSTOP / WR FINISHING  
UNDERARM F.: 95% POLYESTER 5% ELASTANE  
LINING: 100% NYLON RIPSTOP  
INSULATION: 100% POLYESTER (SORONA SYNTHETIC DOWN)

LIKE ♥♥♥

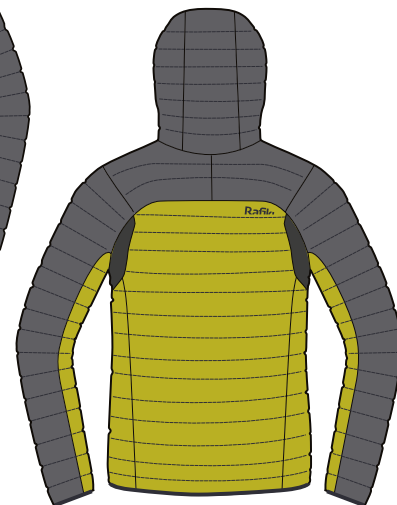
MEN LIGHTWEIGHT INSULATED JACKET

SIZE: S-XXL

WEIGHT: 565 G [ size L ]

STRAIGHT FIT

INSULATED / WATER-REPELENT / YKK ZIPPERS / 2-WAY MAIN ZIPPER  
WITH INTERNAL FULL-LENGTH WINDPROOF FLAP / 2 ZIPPED MAIN POCKETS  
CHEST ZIPPER POCKET / INSIDE MESH POCKETS / POLARSTRETCH UNDERARM PARTS  
LOW-HEM AND CUFFS WITH ELASTIC BINDING / FIXED HOOD WITH ELASTIC  
BINDING AND REGULATION / ERGONOMIC SHAPED SLEEVES / COMPRESSION BAG



Castlerock  
(with Citronelle)

10014916RFX

Citronelle/castlerock

10014917RFX





# LEDGE

98% COTTON + 2% ELASTANE (CORD FABRIC)  
97% COTTON + 3% ELASTANE (REINFORCED PARTS)

LIKE ♥♥♥

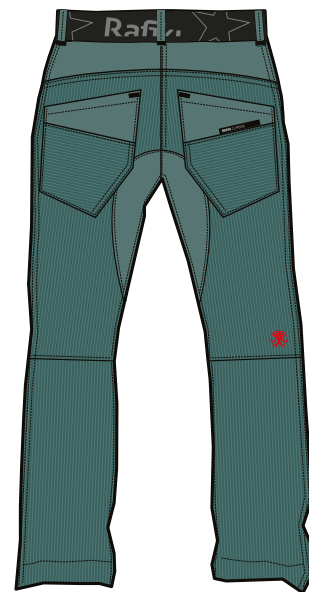
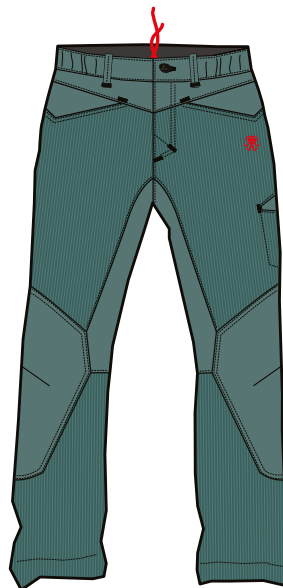
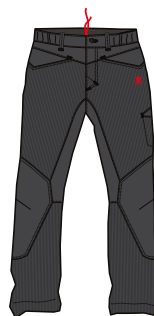
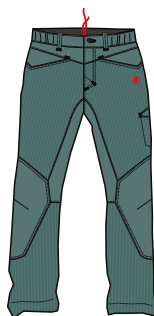
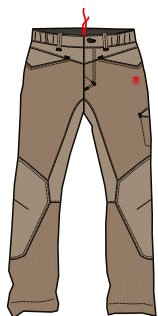
MEN PERFORMANCE CORD PANTS

SIZE: S-XXL  
WEIGHT: 545 G [ size M ]

REGULAR FIT

2 FRONT TOP-ENTRY POCKETS / 2 LARGE REAR PATCHED POCKETS  
ELASTIC ADJUSTABLE WAISTBAND / YKK ZIPPERS / FLY OPENING  
GUSSET FOR FREEDOM OF MOVEMENT / ERGONOMIC PRE-SHAPED KNEES  
BRUSH POCKET / WAISTBELT LOOPS

CLIMBING  
BOULDERING  
MULTISPORT  
LIFESTYLE



Travertine

10014921RFX

Sagebrush

10014920RFX

Asphalt

10016294RFX







# **RAFIKI** ACCESSORIES

# ROPER

## ROPE BAG

### INFO

MAIN: 100% polyester 600 D  
TARP: 100% polyester 210 D coated  
TARP SIZE: 135x125 cm  
WEIGHT: 590 g  
CAPACITY: 25 l

### ACTIVITIES

Climbing

### FEATURES

- + 2 compression straps
- + adjustable shoulder strap
- + integrated rope tarp with colour loops
- + hold ropes up to 80 m

### COLOURS



Sulphur spring

216RF0046BP.01



Charcoal gray

216RF0046BP.02

# FLINT

## VERSATILE STRING BAG

### INFO

100% organic cotton

SIZE: UNI (38x45 cm)  
WEIGHT: 220 g  
CAPACITY: 8 l

### ACTIVITIES

Bouldering  
Lifestyle

### FEATURES

- + travel light
- + versatile string bag
- + ready go-to for everyday life

### COLOURS



Dark navy

10001148RFX01

Medieval blue

10001149RFX01

Natural

10001150RFX01



# CAMP

## SNAPBACK

### INFO

80% acrylic 20% wool

SIZE: UNI

WEIGHT: 90 g

### ACTIVITIES

Climbing  
Bouldrering  
Lifestyle

### FEATURES

- + adjustable plastic snap back closure
- + internal sweatband
- + one size fits most

### COLOURS



gobig

10001163RFX01

# BLISS

## TRUCKER CAP

### INFO

86% cotton 14% polyester

BACK MESH: 100% polyester

SIZE: UNI

WEIGHT: 80 g

### ACTIVITIES

Climbing  
Bouldrering  
Lifestyle

### FEATURES

- + adjustable plastic snap back closure
- + mesh side and back panels
- + internal sweatband
- + one size fits most

### COLOURS



gobig

10001158RFX01

# SCOOP

## CHALK BAG

### INFO

MAIN: 100% cotton  
LINING: 100% polyester microfleece  
SIZE: UNI  
WEIGHT: 100 g

### ACTIVITIES

Climbing  
Bouldering

### FEATURES

- + reinforce neck with drawstring closure
- + 2 loops for belt fastening
- + belt included
- + brush loops
- + microfleece interior

### COLOURS



Persian Red  
(with Dark navy)

10001938RFX01

Dark navy

118F0357AX.05

Lemon Curry  
(with Dark navy)

10001939RFX01

Cabbage  
(with Dark navy)

10001941RFX01

# BISHOP

## BOULDERING CHALK BAG

### INFO

MAIN: 100% cotton  
LINING: 100% polyester microfleece  
SIZE: UNI  
WEIGHT: 175 g

### ACTIVITIES

Bouldering

### FEATURES

- + stable design
- + Velcro roll-up closure with metal buckle
- + side zippered storage pocket  
with ring/key holder
- + 2 brush slots
- + microfleece lined interior

### COLOURS



Dark navy  
(with red)

10004689RFX01



# CHALK

MAGNESIUM



## INFO

100% chalk

## ACTIVITIES

Climbing  
Bouldering

## FEATURES

+ eco cosmetics products (not chemicals)  
+ 100% healthy

## ITEMS



LIQUID 100 ml

10011065RFX01



LIQUID 200 ml

10011066RFX01



BALL 40 g

10011065RFX01



DOSE 100 g

10011066RFX01



SACK 250 g

10011066RFX01

# BOW FLAG

A CLASSIC ADVERTISING FLAG AVAILABLE IN SIZE "S" OR "L"  
IT INCLUDES PRINTED TEXTILE, FLAGPOLE AND STAND FOR  
INDOOR AND OUTDOOR USE.

SIZE: 3

"S" : 55 x 200 CM

"L" : 80 x 3400 CM



# BANNER

PVC BANNER WITH METAL MESH AROUND THE PERIMETER  
FOR MOUNTING

SIZE: 300 x 100 CM



Price and minimum quantity of all promotional products are on request.



# LOGO STAND

---

POS-CARDBOARD DISPLAY STAND, TWO-SIDE PRINT,  
SUITABLE EVEN FOR SUSPENSIONS IN, E.G. SHOP WINDOWS

SIZE: 35 CM - CIRCLE DIAMETER



# CUBE

---

IMAGE PAPER CUBE, TWO SIDES WITH LOGO PRINT,  
THREE SIDES WITH IMAGE PHOTO PRINT.

SIZE: 30 x 30 CM



Price and minimum quantity of all promotional products are on request.





# HANGERS

ORIGINAL SOLID WOODEN  
RAFIKI HANGERS WITH NOTCHES

SIZE: 43 CM



# STICKERS

SET OF 11PCS SELF-ADHESIVE LABELS  
ON AG SHEET. 50PC PER PACKAGE.

SIZE: 105 x 148 MM



# NALGEN BOTTLE

THE ORIGINAL.  
THE TRAILBLAZER.  
THE SIR EDMUND OF WATER BOTTLES.

- 32OZ WIDE MOUTH BOTTLE
- DURABLE
- SCREW TOP



Price and minimum quantity of all promotional products are on request.







# **RAFIKI** AMBASSADORS



## Martina Demmel

A 19-year-old German climber. In just 4 years she has developed her climbing skills so masterfully she was able to redpoint Joe Cita 9a (Olina, Spain) in just five attempts.



## Edita Vopatová

A leading Czech climber. Edita's favourite places to climb are Czech sandstones, Frankenjura and climbing areas in Andalusia and Catalonia. Her hardest ascent is Klondike Cat 8c.



## Jakub Konečný

A talented Czech climber, European Junior Champion and World Junior Runner-up. The most demanding route he has ascended is Catxasa 9a+. Last year his hardest route was Hades 9a in Nassereith.



## Jiří Churavý

A talented Czech Climber. Apart from sport climbing, Jirka is also rock climber. 8a DS and 8c PP belong to his best ascent. His favourite climbing area is Frankenjura. Jirka is also great competitor.



## Eric Albertini

A talented Italian climber. Eric was the second climber to ascend Ultimatum 9a+ route in Arco, Italy. His favourite areas are Italian Arco and Spanish Olina.



## Jakub Skočdopole

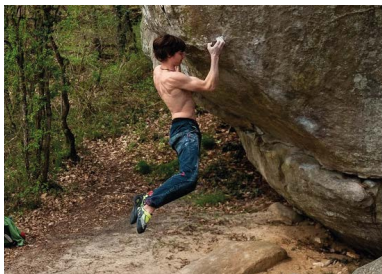
Jakub is a versatile climber. Kuba's most demanding boulder so far has been 8B TNT which he ascended in Hohnstein last year. His hardest route is Missing Link 8b+.





## Martin Jungling

One of the most versatile climbers. He has ascended over six hundred 8A or more difficult boulders. He also climbed difficult routes in Frankenjura, Spain or on Czech sandstones where he has climbed an 8c.



## Rob Denayer

A leading Belgian climber who ascends 8B-8C boulders. His most favourite climbing area is Fontainebleau.



## Štěpán Volf

A talented rock and boulder climber. Štěpán's most demanding ascent so far has been 9a Estado Critico. He would like to climb his first 8B+ boulder this year.



## Klára Janoušková

is a versatile climber and excellent freeride skier and ski mountaineer who enjoys spending all her free time in the mountains and Czech sandstones or on hillsides where she chooses interesting and challenging destinations.



## Štěpán Stráník

A leading Czech boulder climber and keen routsetter who ascends 8B-8B+ boulders. He has ascended over 350 8A or more difficult boulders during last 10 years.

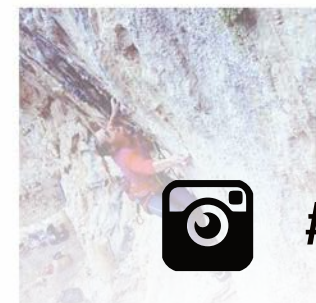


## Vojta Trojan

A talented young climber, the Czech Republic champion in bouldering, 2018. Last year, Vojta climbed his third 9a, Senzace in Krkavka. More about this ascent you can see on our Rafiki Youtube channel.



rafikiclimbing  
apparel for climbers made by climbers



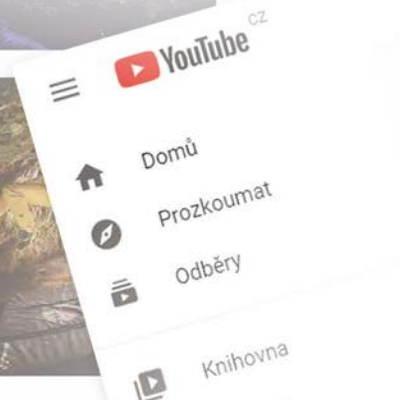
#rafikiclimbing



[www.facebook.com/rafiki.climbinglife](https://www.facebook.com/rafiki.climbinglife)



Rafiki Climbing



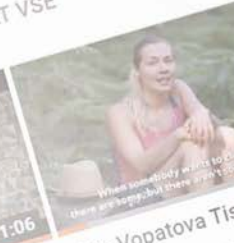
Rafiki Climbing

DOMOVSKÁ STRÁNKA

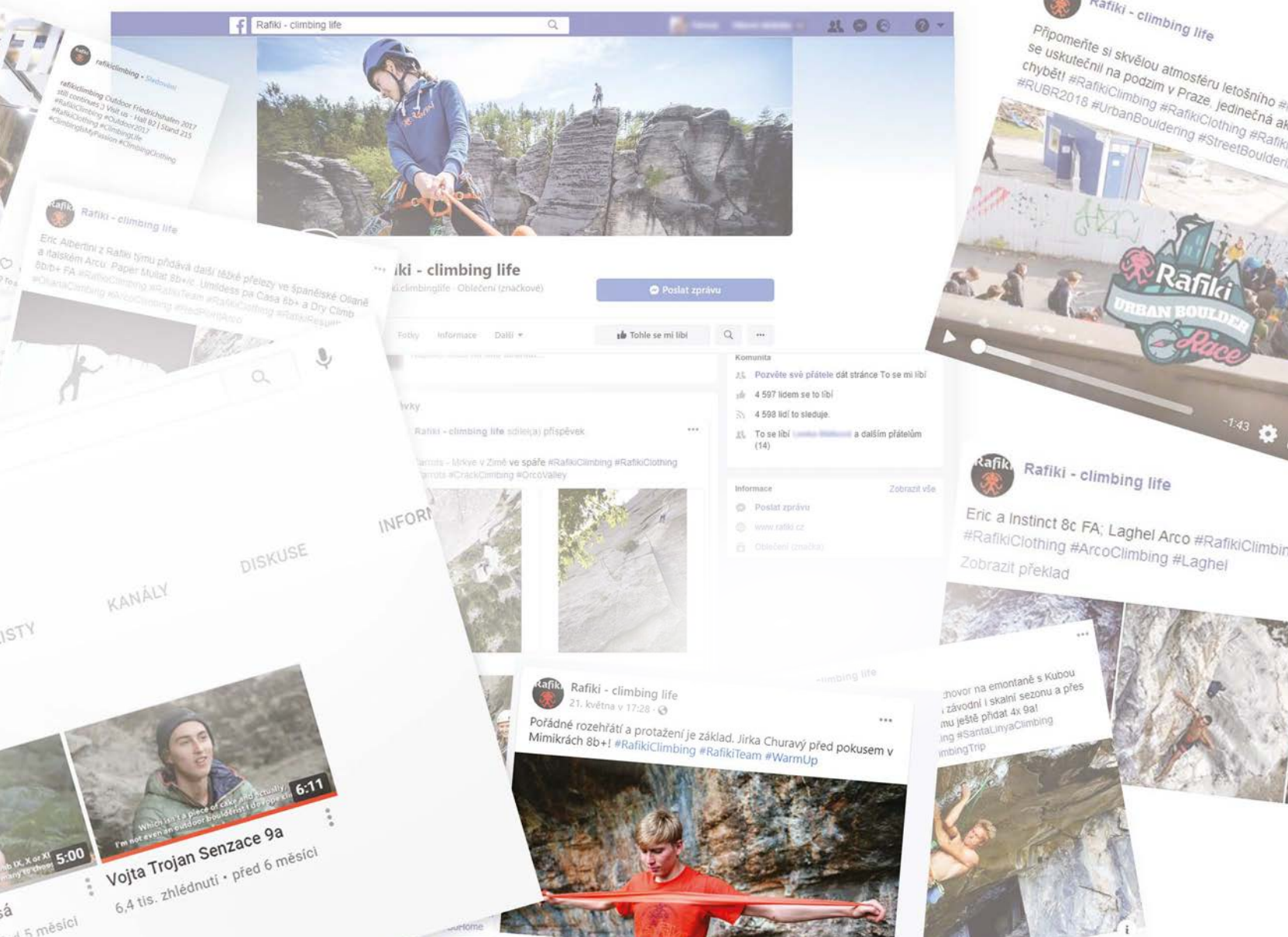
VIDEO

Nahráná videa

PŘEHRÁT VŠE









## THE GLOBAL ORGANIC TEXTILE STANDARD (GOTS)

.. is recognised as the world's leading processing standard for textiles made from organic fibres. It defines high-level environmental criteria along the entire organic textiles supply chain and requires compliance with social criteria as well.

Only textile products that contain a minimum of 70% organic fibres can become GOTS certified. All chemical inputs such as dyestuffs and auxiliaries used must meet certain environmental and toxicological criteria. The choice of accessories is limited in accordance with ecological aspects as well. A functional waste water treatment plant is mandatory for any wet-processing unit involved and all processors must comply with social criteria. The key criteria of GOTS, its quality assurance system and the principles of the review and revision procedure are summarised in this section.



## INDIAN ORGANIC COTTON

.. is cotton that is produced and certified to organic agricultural standards. Its production sustains the health of soils, ecosystems and people by using natural processes rather than artificial inputs. Importantly organic cotton farming does not allow the use of toxic chemicals or GMOs (genetically modified organisms). Instead, it combines tradition, innovation and science to benefit the shared environment and promote a good quality of life for all involved.



**Reduces  
environmental footprint**



**Promotes safe work  
& better livelihoods**



**Impacts our food system**



**Fair price for sustainability**



**You can make a difference**



**Model for the future**



## LENZING MODAL

.. is environmentally friendly. It is made from European beechwood, a sustainable source of material where trees propagate by themselves. Lenzing Modal fibres are certified as biodegradable and compostable. Using innovative Edelweiss technology, Modal is CO<sub>2</sub> neutral. Edelweiss Technology is an "energy self-sufficient" and environmentally friendly manufacturing process.

It is also inherently soft, with low fiber rigidity, high strength and optimum evenness, presenting good pilling performance and high water absorbency, while it is free of foreign fibers.

- CO<sub>2</sub> neutral
- Innovative environmental technology
- Inherently soft
- Low fiber rigidity
- Environmental friendliness
- High strength
- Optimum evenness
- Good pilling performance
- Clean from foreign fibers



## VISCOSE YARN

.. is a man-made cellulose fibre which was earlier known as viscose rayon.

The Yarn is derived from cellulose made from the dissolved wood pulp of trees which is regenerated. Many products are made with this fibre because it is smooth and cool as compared to other fibres. It is highly absorbent and it is very similar to cotton. Viscose is used for making a variety of clothing such as dresses, skirts and innerwear.

Viscose does not need an introduction because it is a popular name in the fibre industry. Viscose fabric lets you breathe easy and the current designs in the fashion industry have made this fibre a popular choice.



The world known brand stands for highly functional and top quality zippers ensuring comfort and reliability even during long-term use. YKK zippers are waterproof, windproof, highly durable, able to withstand extreme weather and therefore are frequently used in technical sports apparel.

<https://www.ykkfastening.com/products/zipper/>



## POLARSTRETCH GRID

.. push your performance even further. The grid design was developed to reduce fabric weight while increasing warmth and compressibility. The grid construction is made by channels between touch points that helps both wicking efficiency and breathability. Thin fleecy grid on the inside pulls moisture from your skin and diffuses it to the outside. This avoids using chemical wicking agents that fade away with time. The open air channels also allow air to circulate, increasing thermal warmth and mechanical wicking capabilities. The outer surface is smooth. It spreads moisture out to a wider surface area for faster evaporation.

The Polarstretch materials are hard-wearing, pliable and flexible in all directions as well as lightweight and easy to maintain. Polarstretch fabrics work best under a wind blocking layer. We suggest to use Polarstretch fabrics as a mid layer for intensive activities in cold conditions.



## ECO-EFFICIENT PERFORMANCE FIBER

.. is a polyester microfiber made of 37% plant-based component (corn glucose). It is soft, quick drying and moisture wicking, so it is a durable and responsible alternative to animal down.

### LIGHTWEIGHT BREATHABLE WARMTH

Sorona® synthetic down insulation provides lightweight, exceptional resistance to heat loss with the added benefit of breathability.

### LONG-LASTING SHAPE AND LOFT

Use it, wash it, then do it again. Sorona® synthetic down insulation maintains its shape and loft wash after wash, so you can look good and stay warm wear after wear, no matter where the day takes you.

### SUPREME SOFTNESS

Live comfortably in every climate. Sorona® synthetic down insulation provides unparalleled softness that redefines how warmth should feel, so you can enjoy the outdoors in any season.

<http://sorona.com>



## HOW TO MEASURE

## MEN

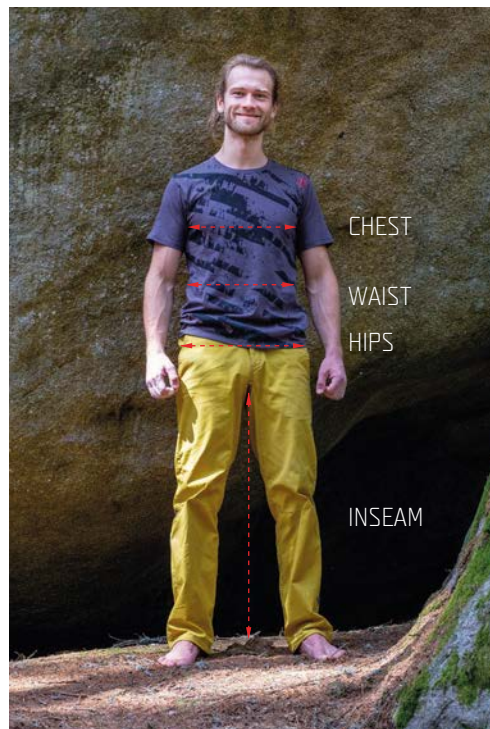
**CHEST** / Place the tape measure under the arms and around the fullest part of your chest with arms raised slightly.

**WAIST** / Measure all the way around your body, level with your belly button. Make sure it's not too tight and that it's straight, even at the back. Don't hold your breath while measuring.

**HIPS** / Put your feet together. Locate the correct area of your hips and measure the widest point around your buttocks. Hold the start of the tape measure on one hip, wrap it around your buttocks and around your other hip and then back to where you started.

**INSEAM** / Grab your favorite pair of pants. Measure the inseam starting at the crotch seam to the bottom of the pant leg.

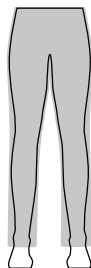
**SLEEVE LENGTH** / Measure with your hands on your hips, from the neck edge, across your shoulder and down the outside of your arm to the wrist bone.



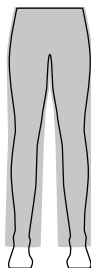
**SLIM / FITTED**  
Fits close to the body  
and form fitting.



**STRAIGHT**  
Straight cut  
through the body



**RELAXED**  
Roomy and comfortable.  
Drapes loosely on the body



## WOMEN

## HOW TO MEASURE

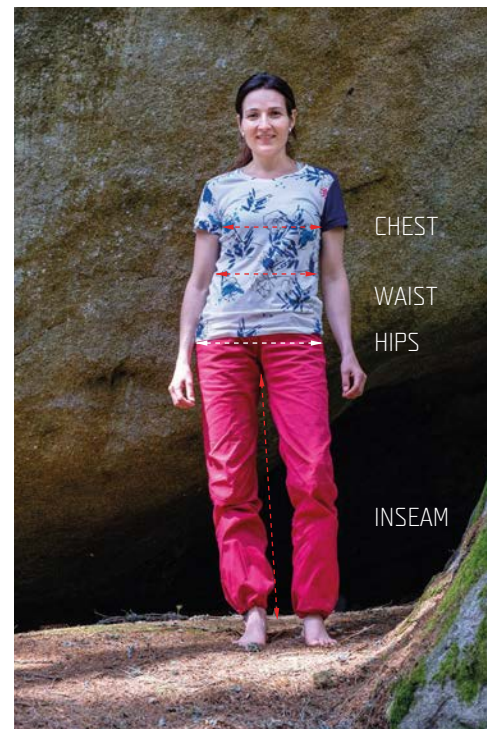
**BUST** / Place the tape measure under the arms and around the fullest part of your bust with arms raised slightly.

**WAIST** / Measure all the way around your body, level with your belly button. Make sure it's not too tight and that it's straight, even at the back. Don't hold your breath while measuring.

**HIPS** / Put your feet together. Locate the correct area of your hips and measure the widest point around your buttocks. Hold the start of the tape measure on one hip, wrap it around your buttocks and around your other hip and then back to where you started.

**INSEAM** / Grab your favorite pair of pants. Measure the inseam starting at the crotch seam to the bottom of the pant leg.

**SLEEVE LENGTH** / Measure with your hands on your hips, from the neck edge, across your shoulder and down the outside of your arm to the wrist bone.



MAN	XS	S	M	L	XL	XXL
	44	46	48	50	52	54
CHEST	86-93	94-98	99-103	104-108	109-113	114-118
WAIST	73-77	78-82	83-87	88-92	93-97	98-102
HIPS	87-91	92-96	97-101	102-106	107-111	112-116
INSEAM	82-84	83-85	84-86	87-89	89-91	90-92

WOMAN	32	34	36	38	40	42	44
	XXS	XS	S	M	L	XL	XXL
CHEST	77-80	81-84	85-88	89-92	93-96	97-100	100-103
WAIST	59-62	63-66	67-70	71-74	75-78	79-82	83-86
HIPS	85-88	89-92	93-96	97-101	102-105	106-109	110-113
INSEAM	76-79	78-81	80-83	82-85	84-87	86-89	88-90

KID	128	140	152
	6-7y	8-9y	10-11y
CHEST	64	69	74
WAIST	58	63	68
HIPS	70	75	80
INSEAM	56	64	73

The measurements are in **centimetres**.

The measurements are only indicative, not dimensions of the garment  
(except for inseam, which is garment measurement)  
We recommend to try out our clothes personally.

# NOTES

---

Rafiki reserves the right to perform changes in the products presented in this workbook. Any part of this presentation cannot be reproduced without permission of Rafiki.

**Photographers:** Jan Novák, Jakub Cejpek, Adam Mašík, Jakub Konečný and @climberbehindlens, Klára Janoušková, Petra Šebestová, Lukáš Klingera, Pavel Nesvadba, Martin Pelikan, Jaroslav Šikula





**WbG**  
RAFIKI  
WATER BOULDER GAMES

**2021**

**..IS COMING**



# Rafiki

[www.facebook.com/rafiki.climbinglife](https://www.facebook.com/rafiki.climbinglife)



#rafikiclimbing



[www.rafiki.cz](http://www.rafiki.cz)



Rafiki Climbing



Americká 54 . 301 00 Plzeň . Czech Republic  
tel.: + 420 379 200 666 . [office@rafiki.cz](mailto:office@rafiki.cz)