



Rafiki

2021



WOMEN POWER AND SUPPORT BRA WITH REMOVABLE CUPS

FABRICS

44% polyester 43% polyamide 13% elastane
92% polyester 8% elastane (liner)

INFO

FIT: Slim
SIZE: 34-40
WEIGHT: ??? g [size 36]

ACTIVITIES

Climbing
Bouldering
Active Multisport Use

FEATURES

- + Breathable quick-drying stretchy fabric
- + Internal bra liner with removable pads
- + High neck coverage



Blossom



Granite Green



Shona

COLOURS



WOMEN COMFORTABLE SINGLET WITH BUILT IN SPORT BRA

FABRICS

44% polyester 43% polyamide 13% elastane
92% polyester 8% elastane (liner)

INFO

FIT: Slim
SIZE: 34-40
WEIGHT: ??? g [size 36]

ACTIVITIES

Climbing
Bouldering
Active Multisport Use

FEATURES

- + Breathable quick-drying stretchy fabric
- + Built in support and removable pads
- + Dual-strap racerback
- + Side ruching detail



Granite Green



Blossom



Dark Navy



Shona

COLOURS

MOLLANS

NEW

S21



PERFORMANCE STRETCHY TIGHTS WITH REINFORCEMENT PARTS

FABRICS

44% polyester 43% polyamide 13% elastane
92% polyamide 8% elastane (reinforcement parts)

INFO

FIT: Slim
SIZE: 34-40
WEIGHT: ??? g [size 36]

ACTIVITIES

Climbing
Bouldering
Active Multisport Use

FEATURES

- + Breathable quick-drying stretchy fabric
- + Hybrid construction with a stretch knit body and stretch woven reinforcements
- + flat-lock seams
- + inseam gusset panel
- + integrated side pockets

COLOURS



Dark Navy



Granite Green



Blossom



Shona

KARIN

NEW

S21



WOMEN STYLISH SOFT SHORT SLEEVE TEE

FABRICS

95% viscose
4% elastane

INFO

FIT: Straight
SIZE: 34-42
WEIGHT: 777 g [size 36]

ACTIVITIES

Lifestyle

FEATURES

- + Breathable comfortably dry fabric
- + Lightweight
- + Does not trap body heat
- + Natural touch
- + Full area print



Asante



Shona

COLOURS



WOMEN STYLISH SOFT LONG SLEEVE TEE

FABRICS

96% viscose
4% elastane

INFO

FIT: Straight
SIZE: 34-42
WEIGHT: ??? g [size 36]

ACTIVITIES

Lifestyle

FEATURES

- + Breathable comfortably dry fabric
- + Lightweight
- + Does not trap body heat
- + Natural touch
- + Full area print



Shona



Asante

COLOURS



WOMEN STYLISH SOFT SKIRT CONVERTIBLE TO DRESS

FABRICS

96% viscose
4% elastane

INFO

FIT: Straight
SIZE: 34-42
WEIGHT: ??? g [size 36]

ACTIVITIES

Lifestyle

FEATURES

- + Breathable comfortably dry fabric
- + Lightweight
- + Does not trap body heat
- + Natural touch
- + Full area print

COLOURS



Shona



Asante



VIBES II

S21



WOMEN PERFORMANCE LIGHTWEIGHT SINGLET

FABRICS

50% Lenzing ® Modal
50% organic cotton
alternative knit 1x1 (bar-jersey)

INFO

FIT: Straight
SIZE: 34-40
WEIGHT: 80 g [size 36]

ACTIVITIES

Climbing
Bouldering
Multisport Use

FEATURES

- + Breathable wicking fabric
- + Lightweight
- + Natural touch

COLOURS



Skipper blue
(Medieval blue back)



Cabbage
(Columbia back)



Cabaret
(Skipper blue back)

CHULILLA

S21



WOMEN PERFORMANCE LIGHTWEIGHT SHORT SLEEVE TEE

FABRICS

50% Lenzing ® Modal
50% organic cotton
alternative knit 1x1 (bar-jersey)

INFO

FIT: Straight
SIZE: 34-42
WEIGHT: 85 g [size 36]

ACTIVITIES

Climbing
Bouldering
Multisport Use

FEATURES

+ Breathable wicking fabric
+ Lightweight
+ Natural touch



NEW

Insignia blue



NEW

Granite Green



NEW

Blossom



Cabbage



Skipper Blue

COLOURS

CHULILLA PRINT

S21

WOMEN PERFORMANCE LIGHTWEIGHT SHORT SLEEVE TEE

FABRICS

50% Lenzing @ Modal
50% organic cotton
alternative knit 1x1 (bar-jersey)

INFO

FIT: Straight
SIZE: 34-42
WEIGHT: 85 g [size 36]

ACTIVITIES

Climbing
Bouldering
Multisport Use

FEATURES

- + Breathable wicking fabric
- + Lightweight
- + Natural touch



COLOURS





WOMEN PERFORMANCE LIGHTWEIGHT LONG SLEEVE TEE

FABRICS

50% Lenzing @ Modal
50% organic cotton
alternative knit 1x1 (bar-jersey)

INFO

FIT: Straight
SIZE: 34-42
WEIGHT: 110 g [size 36]

ACTIVITIES

Climbing
Bouldering
Multisport Use

FEATURES

+ Breathable wicking fabric
+ Lightweight
+ Natural touch



NEW

Blossom

NEW

Jester Red

NEW

Granite green

5

Skipper Blue

COLOURS

FINALE PRINT

S21



WOMEN PERFORMANCE LIGHTWEIGHT LONG SLEEVE TEE

FABRICS

50% Lenzing® Modal
50% organic cotton
alternative knit 1x1 (bar-jersey)

INFO

FIT: Straight
SIZE: 34-42
WEIGHT: 110 g [size 36]

ACTIVITIES

Climbing
Bouldering
Multisport Use

FEATURES

- + Breathable wicking fabric
- + Lightweight
- + Natural touch



Indigo

COLOURS

JAY

WOMEN COMFORTABLE ORGANIC SHORT SLEEVE TEE

S21



FABRICS

100% organic cotton

INFO

FIT: Regular

SIZE: 32-42

WEIGHT: 95 g [size 36]

ACTIVITIES

Lifestyle

Climbing

Bouldering

FEATURES

- + Organic
- + Lightweight
- + Wider neck opening
- + Raw edge neck and sleeve hems
- + Prints variation



Skipper Blue



Dark Navy II



Azalea



Bright White

COLOURS



WOMEN SUPER LIGHTWEIGHT MULTISPORT SHORTS

FABRICS

94% polyamide/ 6% elastane
88% polyester/ 12% elastane (waistband)

INFO

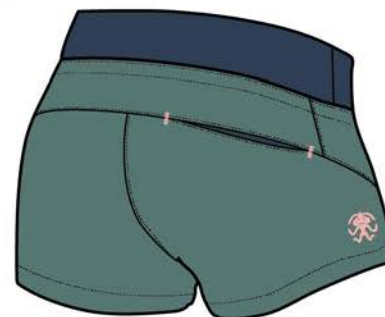
FIT: Straight
SIZE: 34-40
WEIGHT: 100 g [size 36]

ACTIVITIES

Climbing
Bouldering
Active Multisport Use

FEATURES

- + Breathable quick-drying stretchy fabric
- + Ultralite
- + Wide elastic waistband with internal drawcord
- + Back pocket
- + Split detail at side seam



NEW

Jester red



NEW

Sagebrush green



NEW

Insignia blue



Skipper Blue

COLOURS

TARRAGONA

WOMEN SUPER LIGHTWEIGHT MULTISPORT CAPRI PANTS

S21



FABRICS

94% polyamide/ 6% elastane
88% polyester/ 12% elastane (waistband)

INFO

FIT: Straight
SIZE: 34-42
WEIGHT: 170 g [size 36]

ACTIVITIES

Climbing
Bouldering
Active Multisport Use

FEATURES

- + Breathable quick-drying stretchy fabric
- + Ultralite
- + Wide elastic waistband with internal drawcord
- + Hands and back pockets
- + Gusset for freedom of movement
- + Preshaped knees
- + Half cuffs at bottom legs



NEW

Sagebrush green



NEW

Insignia blue



Citronelle



Persian Red

COLOURS



FEMIO

WOMEN SUPER LIGHTWEIGHT MULTISPORT PANTS

S21



FABRICS

94% polyamide/ 6% elastane
88% polyester/ 12% elastane (waistband)

INFO

FIT: Straight
SIZE: 34-42
WEIGHT: 220 g [size 36]

ACTIVITIES

Climbing
Bouldering
Active Multisport Use

FEATURES

- + Breathable quick-drying stretchy fabric
- + Ultralite
- + Wide elastic waistband with internal drawcord
- + Hands and back pockets
- + Gusset for freedom of movement
- + Preshaped knees
- + Half cuffs at bottom legs

COLOURS



NEW

Insignia blue



NEW

Sagebrush green



NEW

Jester red



ACCY II

S21



WOMEN COMFORTABLE LIGHTWEIGHT
CLIMBING SHORTS WITH WIDE ELASTIC WAISTBAND

FABRICS

97% cotton/ 3% elastane
88% polyester/ 12% elastane (waistband)

INFO

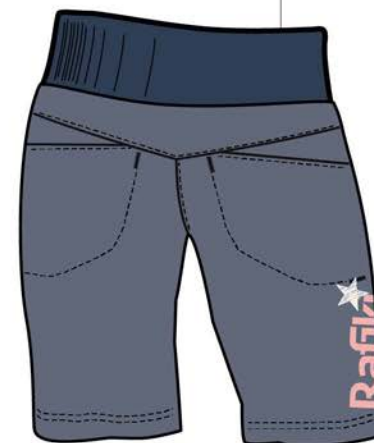
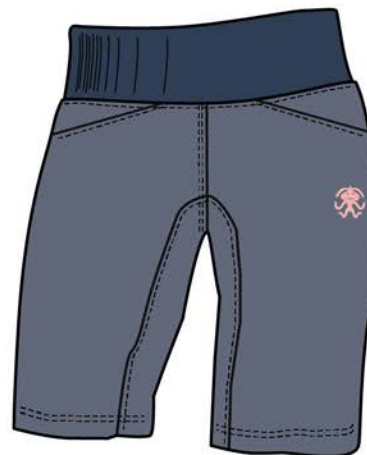
FIT: Straight
SIZE: 34-42
WEIGHT: 220 g [size 36]

ACTIVITIES

Climbing
Bouldering

FEATURES

- + Breathable stretchy fabric
- + Lightweight
- + Wide convertible waistband with inside elastic band
- + 2 front pockets



NEW

Folkstone gray



NEW

Sulphur



Dark navy



Azalea

COLOURS

ETNIA II

WOMEN COMFORTABLE LIGHTWEIGHT
CLIMBING PANTS WITH WIDE ELASTIC WAISTBAND

FABRICS

97% cotton/ 3% elastane
88% polyester/ 12% elastane (waistband)

INFO

FIT: Straight
SIZE: 34-42
WEIGHT: 350 g [size 36]

ACTIVITIES

Climbing
Bouldering

FEATURES

- + Breathable stretchy fabric
- + Lightweight
- + Wide convertible waistband with inside elastic band
- + 2 front pockets
- + 2 rear pockets
- + Low-hem with regulation

COLOURS



NEW

Sulphur



NEW

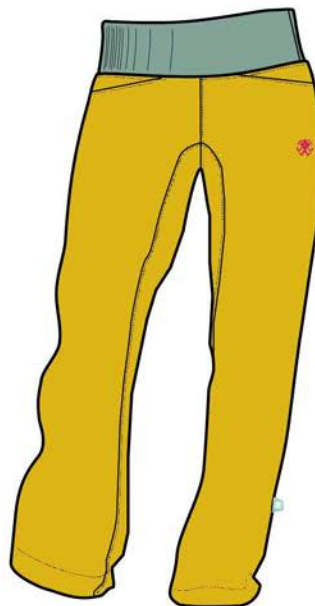
Folkstone gray



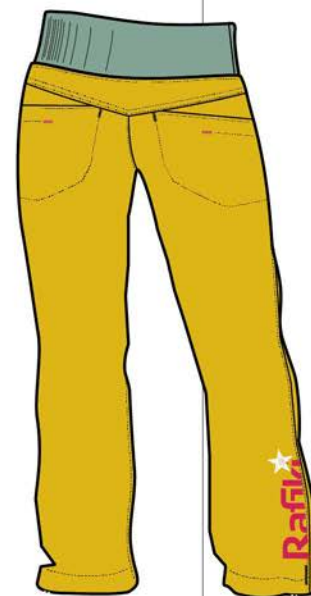
Dark navy



Azalea



S21





WOMEN COMFY SUMMER CLIMBING SHORT

FABRICS

97% cotton/ 3% elastane

INFO

FIT: Straight

SIZE: 34-42

WEIGHT: ??? g [size 36]

ACTIVITIES

Lifetime

Bouldering

Climbing

FEATURES

- + Breathable stretchy fabric
- + YKK zippers
- + Partly elastic waistband
- + Gusset for freedom of movement
- + 2 front pockets
- + 2 rear patch pockets
- + Fly opening
- + Waistbelt loops



Folkstone gray



Azalea



Blossom



Light taupe

COLOURS

SELLA

NEW

WOMEN COMFY SUMMER CLIMBING PANTS

FABRICS

97% cotton/ 3% elastane

INFO

FIT: Straight

SIZE: 34-42

WEIGHT: ??? g [size 36]

ACTIVITIES

Lifetime
Bouldering
Climbing

FEATURES

- + Breathable stretchy fabric
- + YKK zippers
- + Partly elastic waistband
- + Gusset for freedom of movement
- + 2 front pockets
- + 2 rear patch pockets
- + Fly opening
- + Low hem with regulation
- + Waistbelt loops

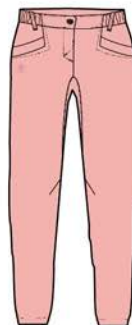
COLOURS



Granite Green



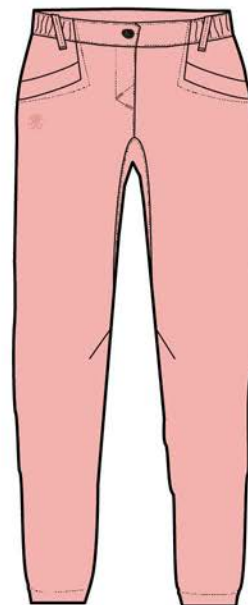
Folkstone Gray



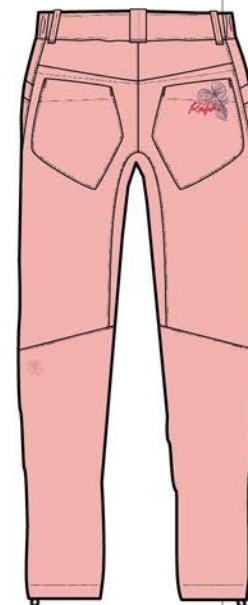
Blossom



Light taupe



S21



RAYEN II

WOMEN CLIMBING PANTS

S21



FABRICS

97% cotton/ 3% elastane
88% polyester/ 12% elastane (waistband)

INFO

FIT: Regular
SIZE: 34-42
WEIGHT: 340 g [size 36]

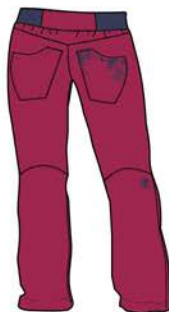
ACTIVITIES

Climbing
Bouldering

FEATURES

- + Breathable stretchy fabric
- + YKK zippers
- + Partly elastic adjustable waistband
- + Gusset for freedom of movement
- + 2 front pockets
- + 2 rear patch pockets
- + Ergonomic pre-shaped knees
- + Fly opening
- + Low hem with regulation

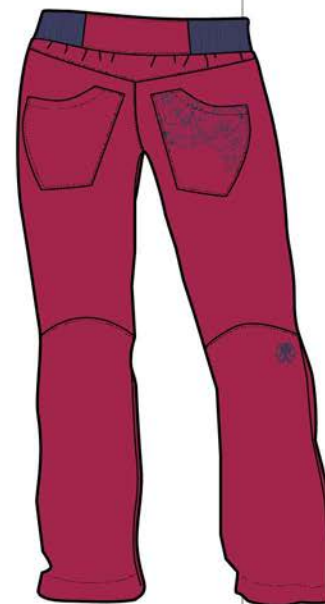
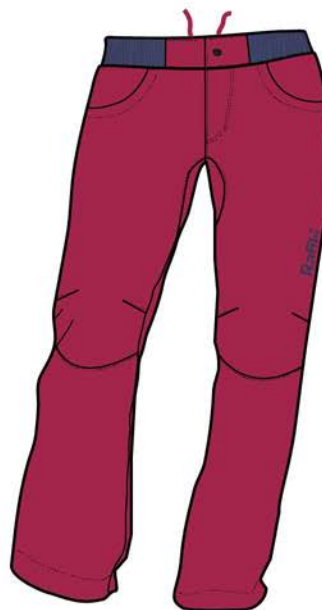
COLOURS



Persian Red



Dark Navy



CUENCA

NEW

WOMEN PERFORMANCE CLIMBING PANTS

FABRICS

97% cotton/ 3% elastane

INFO

FIT: Regular

SIZE: 34-42

WEIGHT: ??? g [size 36]

ACTIVITIES

Climbing
Bouldering

FEATURES

- + Breathable stretchy fabric
- + YKK zippers
- + Partly elastic adjustable waistband
- + Gusset for freedom of movement
- + 2 front pockets
- + 1 rear patch pocket
- + Ergonomic pre-shaped knees
- + Double knee parts
- + Fly opening
- + Low hem with regulation
- + Brush loop
- + Waistbelt loops

COLOURS



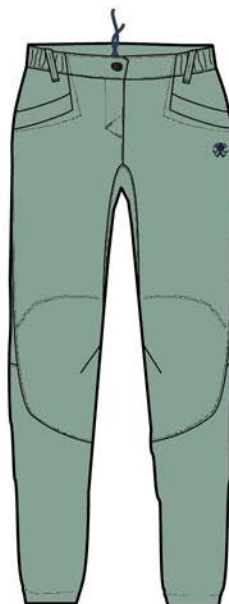
Azalea



Granite Green



Insignia blue



S21



ATTEMPT

NEW

S21



MEN PERFORMANCE LIGHTWEIGHT SINGLET

FABRICS

50% modal
50% organic cotton

INFO

FIT: Straight
SIZE: XS-XL
WEIGHT: ??? g [size M]

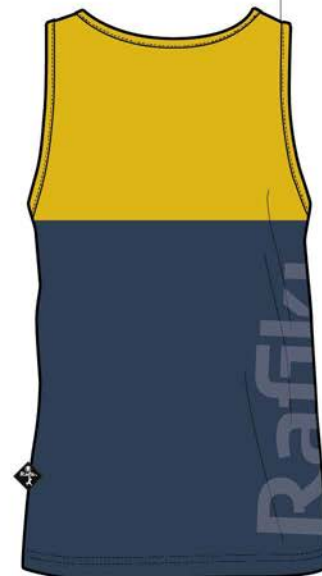
ACTIVITIES

Climbing
Bouldering
Lifetime

FEATURES

- + Breathable wicking fabric
- + Lightweight
- + Natural touch

COLOURS



Sulphur
(Insignia blue)



Jester red
(Insignia blue)



Insignia blue
(Granite green)



MEN PERFORMANCE LIGHTWEIGHT SHORT SLEEVE TEE

FABRICS

50% modal
50% organic cotton

INFO

FIT: Straight
SIZE: XS-XL
WEIGHT: 115 g [size M]

ACTIVITIES

Climbing
Bouldering
Multisport Use

FEATURES

+ Breathable wicking fabric
+ Lightweight
+ Natural touch



NEW

Insignia blue
(Jester red)



NEW

Granite Green
(Insignia blue)



NEW

Castlerock
(Sulphur)



Bright White/ Parasailing



Medieval Blue/ Persian

COLOURS



MEN COMFORTABLE ORGANIC SHORT SLEEVE TEE

FABRICS

100% organic cotton

INFO

FIT: Regular

SIZE: XS-XXL

WEIGHT: 165 g [size M]

ACTIVITIES

Climbing
Bouldering
Lifetime

FEATURES

- + Organic
- + Round neck opening
- + Prints variation



Dark navy II



Jester red



Insignia blue



Lemon curry

COLOURS

SLACK PRINT

S21



MEN COMFORTABLE ORGANIC SHORT SLEEVE TEE

FABRICS

100% organic cotton

INFO

FIT: Regular

SIZE: XS-XXL

WEIGHT: 165 g [size M]

ACTIVITIES

Climbing
Bouldering
Lifetime

FEATURES

- + Organic
- + Round neck opening
- + Full area print



NEW

Bright White II



COLOURS

LEAD

S21



MEN SUPER LIGHTWEIGHT MULTISPORT SHORTS

FABRICS

94% polyamide/ 6% elastane
88% polyester/ 12% elastane (waistband)

INFO

FIT: Regular
SIZE: XS-XL
WEIGHT: 180 g [size M]

ACTIVITIES

Climbing
Bouldering
Active Multisport Use

FEATURES

- + Breathable, quick-drying
- + Ultralite stretchy fabric
- + Side pockets + 1 rear pocket
- + Wide elastic waistband with internal drawcord
- + Full inseam gusset for freedom of movement
- + Back loop detail



NEW

Insignia blue



NEW

Jester red



NEW

Sagebrush green

COLOURS

MOONSTONE

MEN SUPER LIGHTWEIGHT MULTISPORT 3/4 PANTS

S21



FABRICS

94% polyamide/ 6% elastane

INFO

FIT: Straight

SIZE: XS-XL

WEIGHT: 220 g [size M]

ACTIVITIES

Climbing

Bouldering

Active Multisport Use

FEATURES

- + Breathable, quick-drying
- + Ultralite stretchy fabric
- + Wide elastic waistband with internal drawcord
- + Hand pockets + 1 rear pocket
- + Gusset for freedom of movement
- + Ergonomic pre-shaped knees
- + Brush loop and pocket
- + Low-hem with regulation
- + Back loop detail



NEW

Sagebrush green

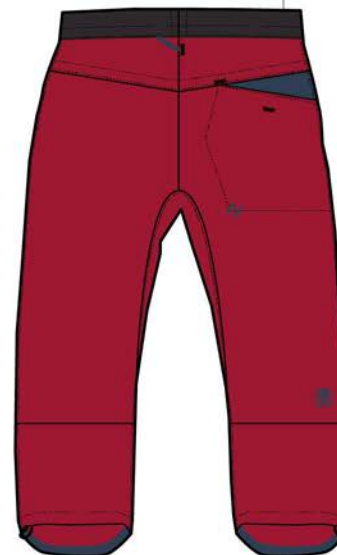


NEW

Jester red



Majolica blue



COLOURS

DRIVE

MEN SUPER LIGHTWEIGHT MULTISPORT PANTS

FABRICS

94% polyamide/ 6% elastane

INFO

FIT: Straight

SIZE: XS-XL

WEIGHT: 265 g [size M]

ACTIVITIES

Climbing

Bouldering

Active Multisport Use

FEATURES

- + Breathable, quick-drying
- + Ultralite stretchy fabric
- + Wide elastic waistband with internal drawcord
- + Hand pockets + 1 rear pocket
- + Gusset for freedom of movement
- + Ergonomic pre-shaped knees
- + Brush loop and pocket
- + Low-hem with regulation
- + Back loop detail

COLOURS

NEW

Insignia blue

NEW

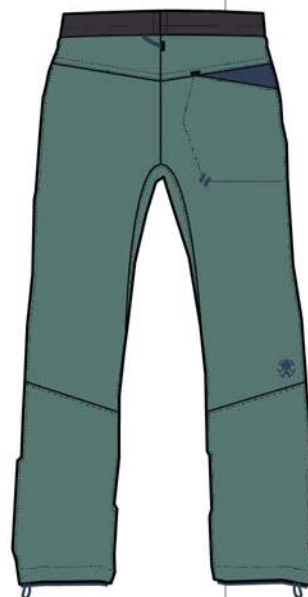
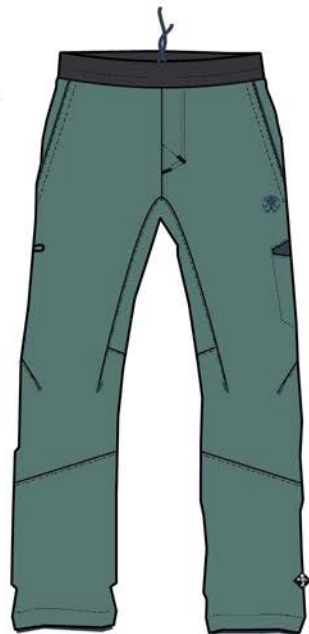
Jester red

NEW

Sagebrush green



Castlerock



S21



CRUX

NEW

S21



MEN ALL-DAY COMFORT CLIMBING SHORTS

FABRICS

97% cotton/ 3% elastane

INFO

FIT: Regular

SIZE: S-XXL

WEIGHT: ??? g [size M]

ACTIVITIES

Lifetime
Bouldering
Climbing

FEATURES

- + Breathable stretchy fabric
- + YKK zippers
- + Partly elastic adjustable waistband
- + Gusset for freedom of movement
- + 2 front top-entry pockets with integrated brush pockets
- + 2 rear patch pockets
- + Thigh pocket
- + Fly opening
- + Waistbelt loops



Sagebrush green



Insignia blue



Light taupe



Folkstone gray

COLOURS

MEGOS

S21



MEN SOLID PERFORMANCE
CLIMBING SHORTS FOR ALL-DAY COMFORT

FABRICS

97% cotton/ 3% elastane

INFO

FIT: Regular

SIZE: XS-XL

WEIGHT: 225 g [size M]

ACTIVITIES

Climbing
Bouldering

FEATURES

- + Breathable stretchy fabric
- + Elastic adjustable waistband
- + Full inseam gusset for freedom of movement
- + 2 front top-entry pockets with integrated brush pockets
- + Back loop detail



NEW

Jester red



NEW

Insignia blue



NEW

Sagebrush green



Dark navy II



Lemon curry

COLOURS

CLIFFBASE

MEN SOLID PERFORMANCE CLIMBING 3/4 PANTS

S21



FABRICS

97% cotton/ 3% elastane

INFO

FIT: Regular

SIZE: XS-XL

WEIGHT: 225 g [size M]

ACTIVITIES

Climbing

Bouldering

FEATURES

- + Breathable stretchy fabric
- + YKK zippers
- + Elastic waistband with regulation
- + Inseam gusset for freedom of movement
- + 2 front pockets, 1 rear pocket
- + Ergonomic pre-shaped knees
- + Brush pocket
- + Velcro fly opening



NEW

Jester red



NEW

Sagebrush green



NEW

Insignia blue

COLOURS

RESULT

MEN SOLID CLIMBING PANTS

S21



FABRICS

97% cotton/ 3% elastane

INFO

FIT: Regular

SIZE: XS-XL

WEIGHT: 400 g [size M]

ACTIVITIES

Climbing
Bouldering

FEATURES

- + Breathable stretchy fabric
- + YKK zippers
- + Elastic adjustable waistband
- + Gusset for freedom of movement
- + Ergonomic pre-shaped knees
- + Double knee parts
- + 2 front top-entry pockets
- + 2 rear patch pockets
- + Zipped side pocket
- + Fly opening
- + Low hem with regulation
- + Brush pocket
- + Waistbelt loops

COLOURS



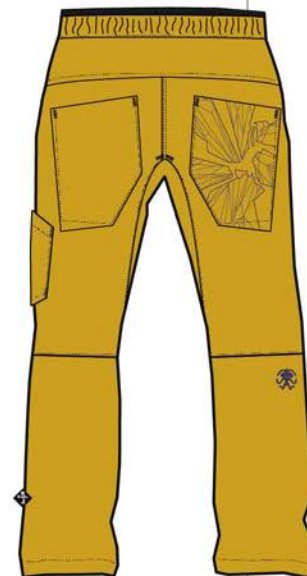
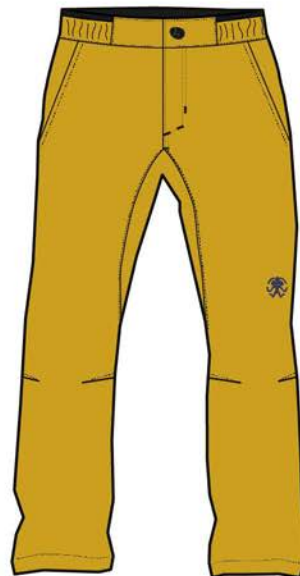
Persian red



Lemon curry



Majolica blue



CRAG

NEW

MEN SOLID PERFORMANCE
CLIMBING PANTS FOR ALL-DAY COMFORT

FABRICS

97% cotton/ 3% elastane

INFO

FIT: Regular

SIZE: S-XXL

WEIGHT: ??? g [size M]

ACTIVITIES

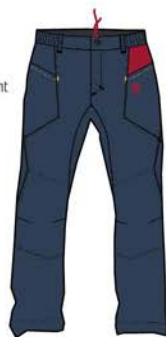
Climbing

Bouldering

FEATURES

- + Breathable stretchy fabric
- + YKK zippers
- + Elastic adjustable waistband
- + Gusset for freedom of movement
- + Ergonomic pre-shaped knees
- + Double knee parts
- + 2 front top-entry pockets
- + 2 rear patch pockets
- + Zipped side pocket
- + Fly opening
- + Low hem with regulation
- + Brush pocket
- + Waistbelt loops

COLOURS



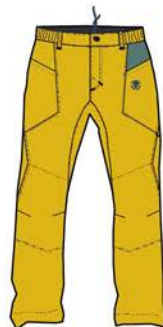
Insignia blue



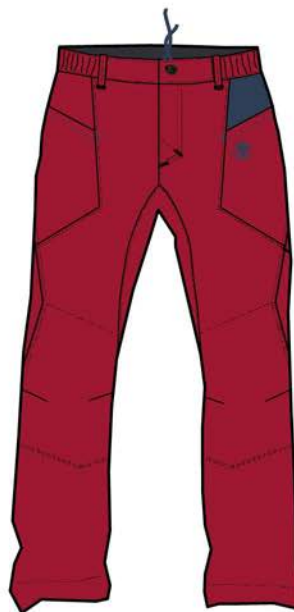
Jester red



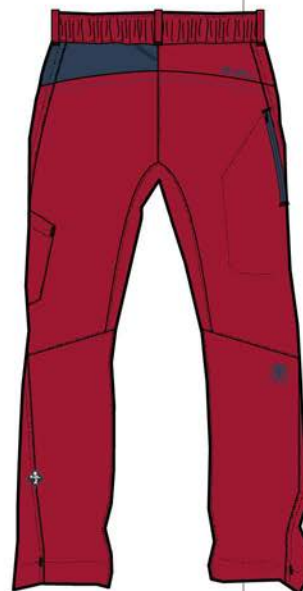
Sagebrush green



Sulphur



S21



BOBBY JR

S21



KIDS COMFORTABLE ORGANIC SHORT SLEEVE TEE

FABRICS

100% organic cotton
single jersey 160

INFO

FIT: Regular
SIZE: 128, 140, 152
WEIGHT: 95 g [size 152]

ACTIVITIES

Climbing
Bouldering
Lifetime

FEATURES

- + Organic
- + Round neck opening
- + Prints variation



NEW

Insignia blue



NEW

Sulphur



NEW

Blossom

COLOURS

RUMNEY JR

KIDS CLIMBING SHORTS FOR ALL-DAY COMFORT

S21



FABRICS

97% cotton/ 3% elastane

INFO

FIT: Regular

SIZE: 128, 140, 152

WEIGHT: 130 g [size 152]

ACTIVITIES

Climbing
Bouldering

FEATURES

- + Breathable stretchy fabric
- + Elastic waistband
- + Full inseam gusset for freedom of movement
- + 2 front pockets
- + 1 rear patch pocket



NEW

Jester red
(Insignia blue)



NEW

Insignia blue
(Jester red)



NEW

Sulphur
(Insignia blue)

COLOURS

PEDRO JR

KIDS CLIMBING PANTS FOR ALL-DAY COMFORT

S21



FABRICS

97% cotton/ 3% elastane

INFO

FIT: Regular

SIZE: 128, 140, 152

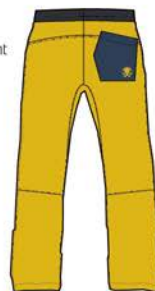
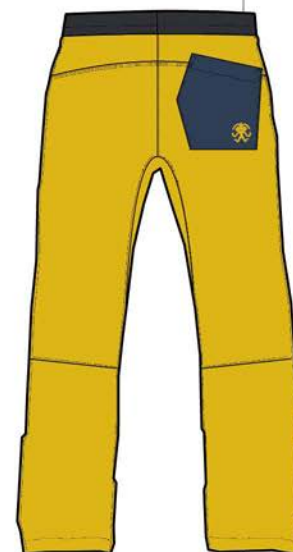
WEIGHT: 190 g [size 152]

ACTIVITIES

Climbing
Bouldering

FEATURES

- + Breathable stretchy fabric
- + Elastic waistband
- + Gusset for freedom of movement
- + Ergonomic pre-shaped knees
- + 2 front pockets
- + 1 rear patch pocket



NEW

Sulphur
(Insignia blue)



NEW

Sagebrush green
(Insignia blue)



NEW

Insignia blue
(Jester red)

COLOURS