

2019

updated: 6.8.2018



Rafiki



WOMEN'S COLLECTION

SUGGESTED COLOUR COMBINATIONS



SUGGESTED COLOUR COMBINATIONS





SIURANA BRA NEW

RRP WSP

ACTIVITIES: Climbing, Bouldering, Yoga
BENEFITS: breathable, lightweight, stretch, quick dry

PRODUCT FEATURES:
 - stretch fabric
 - internal bra liner with removable modesty cups
 - wide X-back elastic straps
 - sublimated print

MAIN MATERIAL: 87% polyester 13% elastane
OTHER: 92% polyester 8% elastan (liner)

FIT: slim
SIZE: 34-40
WEIGHT: 95 g [36]



Hexa Wine



Hexa Blue



Hexa Blue



PASSION_{BRA}

RRP WSP

ACTIVITIES: Climbing, Bouldering, Yoga
BENEFITS: breathable, lightweight, stretch, quick dry

PRODUCT FEATURES:
 - stretch fabric
 - internal bra liner with removable modesty cups
 - novelty back straps detail
 - sublimated print

MAIN MATERIAL: 87% polyester 13% elastane
OTHER: 92% polyester 8% elastan (liner)

FIT: slim
SIZE: 34-40
WEIGHT: 95 g (36)



Exotic



Cabaret



Majolica blue



Exotic



VIBES_{SINGLET} NEW

RRP WSP

ACTIVITIES: Climbing, Bouldering
BENEFITS: breathable, stretch, soft

PRODUCT FEATURES:
 - elastic fabric
 - inner shell fabric bra
 - unique wide single strap racerback

MAIN MATERIAL: 95% cotton 5% elastane
 single jersey 160

FINISHING: silicone wash

FIT: slim
SIZE: 34-40
WEIGHT: 125 g (36)



Purple Potion



Majolica Blue



Purple Potion

SHEEN II SINGLET NEW

RRP WSP

ACTIVITIES: Climbing, Bouldering, Yoga
BENEFITS: breathable, lightweight, stretch, quick dry

PRODUCT FEATURES:
 - stretch fabric
 - comfortable fit with flat seams
 - performance mesh fabric for back body
 - sublimated print
 - unlined for layering

MAIN MATERIAL: 87% polyester 13% elastane
OTHER: 92% polyester 8% elastan (back part)

FIT: slim
SIZE: 34-40
WEIGHT: 105 g (36)



Hexa Blue



Hexa Wine



Hexa Blue

SHEEN SINGLET

RRP WSP

ACTIVITIES: Climbing, Bouldering, Yoga
BENEFITS: breathable, lightweight, stretch, quick dry

PRODUCT FEATURES:
 - stretch fabric
 - comfortable fit with flat seams
 - performance mesh fabric for back body
 - sublimated print
 - unlined for layering

MAIN MATERIAL: 87% polyester 13% elastane

FIT: slim
SIZE: 34-40
WEIGHT: 105 g (36)



Cabaret



Exotic



Jade cream



Jade Cream



Bluebird

JUDY SHORT SLEEVE T-SHIRT

RRP WSP

ACTIVITIES: Climbing, Bouldering, Lifetime
BENEFITS: breathable, stretch, soft

PRODUCT FEATURES:

- elastic fabric
- prints variation
- rounded front and back low-hem
- back seam detail

MAIN MATERIAL: 95% cotton 5% elastane
single jersey 160

FINISHING: silicone wash

FIT: regular

SIZE: 34-42

WEIGHT: 100 g (36)



Cabaret
NEW

Majolica Blue
NEW

Cabbage

Bluebird

Firecracker

JAY SHORT SLEEVE T-SHIRT

RRP WSP

ACTIVITIES: Climbing, Bouldering, Lifetime
BENEFITS: breathable, organic, soft

PRODUCT FEATURES:

- prints variation
- wider neck opening
- raw edge neck and sleeve hems



MAIN MATERIAL: 100% organic cotton
single jersey 160

FINISHING: fabric bio washed

FIT: regular

SIZE: 32-42

WEIGHT: 95 g (36)



Wild Rose
NEW

Bluebird
NEW

Dark Navy
NEW

Jade Cream

Bright white



Wild Rose



Hexa Blue



Thai Blue



Thai

CEUSE SINGLET DRESS NEW

RRP WSP

ACTIVITIES: Lifetime
BENEFITS: breathable, soft

PRODUCT FEATURES:
- elastic fabric
- scoop neck design
- elastic straps racerback detail
- unlined for layering

MAIN MATERIAL: 95% cotton 5% elastane
single jersey 160

FINISHING: silicone wash

FIT: regular
SIZE: 34-42
WEIGHT: 180 g (36)

MANCHA LONG SLEEVE T-SHIRT

RRP WSP

ACTIVITIES: Climbing, Bouldering, Lifetime
BENEFITS: breathable, stretch, soft

PRODUCT FEATURES:
- elastic fabric
- prints variation
- wider neck opening

MAIN MATERIAL: 95% cotton 5% elastane
single jersey 160

FINISHING: silicone wash

FIT: regular
SIZE: 34-42
WEIGHT: 200 g (36)



Thai Blue
NEW



Thai / Majolica Blue
NEW



reference
colourway only

Nika II HOODY

RRP WSP

ACTIVITIES: Climbing, Bouldering, Lifetime
BENEFITS: breathable, lightweight

PRODUCT FEATURES:

- fixed hood with regulation
- kangaroo pocket
- ribbed sleeve cuffs
- ribbed bottom hem

MAIN MATERIAL: 80% cotton 20% polyester
OTHER: 93% cotton 7% elastane (rib cuff)

FIT: regular
SIZE: 34-42
WEIGHT: 410 g (36)



Beaujolais



Beaujolais



Majolica Blue

Root FULL-ZIP HOODY

RRP WSP

ACTIVITIES: Climbing, Bouldering
BENEFITS: breathable, lightweight, YKK zippers

PRODUCT FEATURES:

- 2 zipped main pockets
- fixed hood with regulation
- cuffs with elastic binding
- ribbed bottom hem

MAIN MATERIAL: 80% cotton 20% polyester
OTHER: 93% cotton 7% elastane (rib cuff)

FIT: regular
SIZE: 34-42
WEIGHT: 445 g (36)



Beaujolais



Bluebird



Paradise Pink



Bluebird



VELLA SHORTS NEW

RRP WSP

ACTIVITIES: Climbing, Bouldering

BENEFITS: breathable, lightweight, stretch, quick dry

PRODUCT FEATURES:

- wide elastic waistband
- waist internal drawcord
- back pocket
- split detail at side seam

MAIN MATERIAL: 94% polyamide 6% elastan

OTHER: 88% polyester 12% spandex (waistband cuff)

FIT: straight

SIZE: 34-40

WEIGHT: 100 g (36)



Majolica Blue



Enamel Blue



Majolica Blue



Majolica Blue

Accy II SHORTS NEW

RRP WSP

ACTIVITIES: Climbing, Bouldering

BENEFITS: breathable, lightweight, stretch, soft

PRODUCT FEATURES:

- wide convertible waistband with inner elastic band
- 2 front pockets

MAIN MATERIAL: 97% cotton 3% elastane

OTHER: 88% polyester 12% spandex (waistband cuff)

FIT: straight

SIZE: 34-42

WEIGHT: 220 g (36)



Majolica Blue



Dark Navy



Citronelle

Accy SHORTS

RRP WSP

ACTIVITIES: Climbing, Bouldering

BENEFITS: breathable, lightweight, stretch, soft

PRODUCT FEATURES:

- wide convertible ribbed waistband
- 2 front pockets

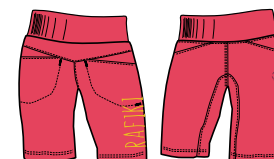
MAIN MATERIAL: 97% cotton 3% elastane

OTHER: 93% cotton 7% spandex (waistband cuff)

FIT: straight

SIZE: 34-42

WEIGHT: 220 g (36)



Paradise Pink



Paradise Pink



Majolica exotic



Majolica exotic

CAYE SHORTS

RRP WSP

ACTIVITIES: Lifetime

BENEFITS: breathable, stretch, soft, YKK zippers

PRODUCT FEATURES:

- waistband with button and zip
- attractive waistbelt loops
- 2 front pockets
- 2 rear patch pockets with flaps and stitch details
- gusset for freedom of movement

MAIN MATERIAL: 98% cotton 2% elastane

FINISHING: twill carbon peach, GMT wash

FIT: regular

SIZE: 34-42

WEIGHT: 245 g (36)

CAT II PRINT 3/4 TIGHTS NEW

RRP WSP

ACTIVITIES: Climbing, Bouldering, Yoga

BENEFITS: breathable, lightweight, stretch, quick dry

PRODUCT FEATURES:

- elastic waist
- comfortable fit with flat seams
- triangle gusset for reinforcement and comfort
- power mesh insert detail at under knee parts
- sublimated print

MAIN MATERIAL: 87% polyester, 13% elastane

OTHER: 92% polyester 8% elastan (mesh parts)

FIT: slim

SIZE: 34-40

WEIGHT: 190 g (36)



Hexa Wine



Hexa Blue



reference
colourway only



CAT L II PRINT TIGHTS NEW

RRP WSP

ACTIVITIES: Climbing, Bouldering, Yoga
BENEFITS: breathable, lightweight, stretch, quick dry

PRODUCT FEATURES:
 - elastic waist
 - comfortable fit with flat seams
 - triangle gusset for reinforcement and comfort
 - sublimated print
 - power mesh insert detail

MAIN MATERIAL: 87% polyester, 13% elastane
OTHER: 92% polyester 8% elastan (mesh parts)

FIT: slim
SIZE: 34-40
WEIGHT: 220 g (36)



Hexa Wine



Hexa Blue



Hexa Wine



FEMIO PANTS NEW

RRP WSP

ACTIVITIES: Climbing, Bouldering, Yoga
BENEFITS: breathable, lightweight, stretch, quick dry

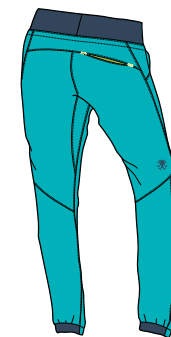
- PRODUCT FEATURES:**
- wide elastic waistband
 - waist internal drawcord
 - hands and back pocket
 - preshaped knees
 - gusset for freedom of movement
 - half cuffs at bottom legs

MAIN MATERIAL: 94% polyamide 6% elastan
OTHER: 88% polyester 12% spandex (waistband cuff)

FIT: straight
SIZE: 34-42
WEIGHT: 220 g (36)



Majolica Blue



Enamel Blue



Citronelle



Citronelle

ETNIA II ^{NEW} PANTS

RRP WSP

ACTIVITIES: Climbing, Bouldering
BENEFITS: breathable, lightweight, stretch

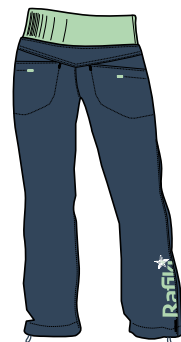
PRODUCT FEATURES:
 - wide convertible waistband
 with inner elastic band
 - 2 front pockets
 - 2 rear pockets
 - drawstring bottom leg regulation

MAIN MATERIAL: 97% cotton 3% elastane
OTHER: 88% polyester 12% spandex (waistband cuff)

FIT: straight
SIZE: 34-42
WEIGHT: 350 g (36)



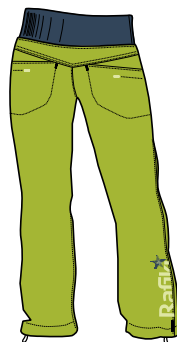
Majolica Blue



Majolica Blue



Dark Navy



Citronelle

ETNIA JEANS II ^{NEW} PANTS

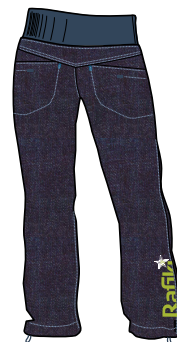
RRP WSP

ACTIVITIES: Climbing, Bouldering
BENEFITS: breathable, lightweight, stretch

PRODUCT FEATURES:
 - wide convertible waistband
 with inner elastic band
 - 2 front pockets
 - 2 rear pockets
 - drawstring bottom leg regulation

MAIN MATERIAL: 98% cotton, 2% elastane denim
OTHER: 88% polyester 12% spandex (waistband cuff)
FINISHING: light GMT wash

FIT: straight
SIZE: 34-42
WEIGHT: 375 g (36)



Night Denim



reference
 colourway only

RAYEN II PANTS NEW

RRP WSP

ACTIVITIES: Climbing, Bouldering
BENEFITS: breathable, stretch, durable,
 YKK zippers

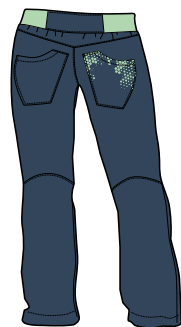
PRODUCT FEATURES:
 - adjustable partly-elastic waistband
 - waistband with button and zip
 - 2 front pockets
 - 2 rear patch pockets
 - gusset for freedom of movement
 - ergonomic pre-shaped knees
 - bottom leg regulation with drawstring
 - side loops for brush

MAIN MATERIAL: 97% cotton 3% elastane
OTHER: 88% polyester 12% spandex (waistband cuff)
FINISHING: light GMT wash

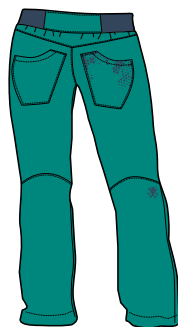
FIT: regular
SIZE: 34-42
WEIGHT: 340 g (36)



Enamel Blue



Majolica blue



Enamel blue

RAYEN PANTS

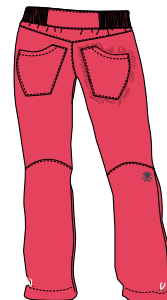
RRP WSP

ACTIVITIES: Climbing, Bouldering
BENEFITS: breathable, stretch, durable,
 YKK zippers

PRODUCT FEATURES:
 - adjustable partly-elastic waistband
 - waistband with button and zip
 - 2 front pockets
 - 2 rear patch pockets
 - gusset for freedom of movement
 - ergonomic pre-shaped knees
 - bottom leg regulation with drawstring
 - side loops for brush

MAIN MATERIAL: 97% cotton 3% elastane
OTHER: 93% cotton 7% spandex (waistband cuff)
FINISHING: light GMT wash

FIT: regular
SIZE: 34-42
WEIGHT: 340 g (36)



Paradise Pink



Paradise Pink

ALYSSIA PANTS

RRP WSP

ACTIVITIES: Lifetime
BENEFITS: breathable, stretch, soft, YKK zippers

PRODUCT FEATURES:
 - waistband with button and zip
 - attractive waistbelt loops
 - 2 front pockets
 - 2 rear patch pockets with flaps and stitch details
 - gusset for freedom of movement

MAIN MATERIAL: 98% cotton 2% elastane
FINISHING: twill carbon peach, GMT wash

FIT: regular
SIZE: 34-42
WEIGHT: 390 g (36)



Majolica exotic

Majolica exotic

LORRE PANTS

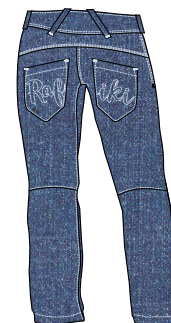
RRP WSP

ACTIVITIES: Lifetime, Bouldering
BENEFITS: breathable, stretch, durable, YKK zippers

PRODUCT FEATURES:
 - waistband with button, zip and belt loops
 - 2 front pockets
 - 2 rear patch pockets with flaps
 - gusset for freedom of movement
 - bottom leg regulation with drawstring
 - side loops for brush

MAIN MATERIAL: 98% cotton, 2% elastane denim

FIT: regular
SIZE: 34-42
WEIGHT: 580 g (36)



Denim



Night Denim



Night Denim



MEN'S COLLECTION

SUGGESTED COLOUR COMBINATIONS

RAID
full-zip hoody



HANK
short sleeve Tee



MEGOS shorts



ANGEL singlet



LEAD shorts



SLACK
organic Tee



CLIFFBASE
3/4 shorts



FILE II
hoody



HANK
short sleeve Tee



MOONSTONE
3/4 shorts



ANGEL singlet



LEAD shorts



SUGGESTED COLOUR COMBINATIONS

RAID
full-zip hoody



SLACK PRINT
organic Tee



CLIMBY shorts



JAMAR
long sleeve Tee



FACEROCK pants



ANGEL singlet



MOONSTONE
3/4 shorts



SLACK
organic Tee



FAUX pants



SLACK
organic Tee



RESULT pants







reference
colourway only

ANGLE SINGLET NEW

RRP WSP

ACTIVITIES: Climbing, Bouldering
BENEFITS: breathable, stretch

PRODUCT FEATURES:
- elastic fabric

MAIN MATERIAL: 95% cotton 5% elastane
single jersey 160

FINISHING: silicone wash

FIT: straight
SIZE: S-XXL
WEIGHT: 140 g (M)



Dark Navy



Citronelle

HANK SHORT SLEEVE T-SHIRT

RRP WSP

ACTIVITIES: Climbing, Bouldering
BENEFITS: breathable, stretch

PRODUCT FEATURES:
- elastic fabric

MAIN MATERIAL: 95% cotton 5% elastane
single jersey 160

FINISHING: silicone wash

FIT: straight
SIZE: XS-XL
WEIGHT: 160 g (M)



Enamel Blue
NEW



Citronelle
NEW



reference
colourway only



Dark Exotic

HANK II SHORT SLEEVE T-SHIRT

RRP WSP

ACTIVITIES: Climbing, Bouldering
BENEFITS: breathable, stretch

PRODUCT FEATURES:
- elastic fabric

MAIN MATERIAL: 95% cotton 5% elastane
single jersey 160

FINISHING: silicone wash

FIT: straight
SIZE: S-XL
WEIGHT: 160 g (M)



Dark Exotic

SLACK SHORT SLEEVE T-SHIRT

RRP WSP



ACTIVITIES: Climbing, Bouldering, Travel
BENEFITS: breathable, organic

PRODUCT FEATURES:
- prints variation

MAIN MATERIAL: 100% organic cotton
single jersey 160
FINISHING: fabric bio washed

FIT: regular
SIZE: XS-XL
WEIGHT: 165 g (M)



Majolica Blue
NEW

Dark Navy
NEW

Poinciana
NEW



Majolica Blue





reference
colourway only



Bright White

SLACK PRINT

SHORT SLEEVE T-SHIRT

NEW

RRP WSP



ACTIVITIES: Climbing, Bouldering, Travel
BENEFITS: breathable, organic

PRODUCT FEATURES:
- full area print

MAIN MATERIAL: 100% organic cotton
single jersey 160

FINISHING: fabric bio washed

FIT: regular
SIZE: XS-XL
WEIGHT: 165 g (M)

JAMAR

LONG SLEEVE T-SHIRT

RRP WSP

ACTIVITIES: Climbing, Bouldering, Travel
BENEFITS: breathable, stretch

PRODUCT FEATURES:
- elastic fabric

MAIN MATERIAL: 95% cotton 5% elastane
single jersey 160

FINISHING: silicone wash

FIT: straight
SIZE: XS-XL
WEIGHT: 200 g (M)



Dark Exotic



Majolica blue



Majolica Blue

RAID FULL-ZIP HOODY

RRP WSP

ACTIVITIES: Climbing, Bouldering
BENEFITS: breathable, lightweight, YKK zippers

PRODUCT FEATURES:
 - 2 main pockets
 - fixed hood with regulation
 - ribbed sleeve cuffs
 - ribbed bottom hem

MAIN MATERIAL: 80% cotton 20% polyester
OTHER: 93% cotton 7% elastanee (rib cuff)

FIT: regular
SIZE: S-XL
WEIGHT: 605 g (M)



Majolica Blue



Enamel Blue



Poinciana

FILE II HOODY

RRP WSP

ACTIVITIES: Climbing, Bouldering
BENEFITS: breathable, lightweight

PRODUCT FEATURES:
 - fixed hood with regulation
 - kangaroo pocket
 - ribbed sleeve cuffs
 - ribbed bottom hem

MAIN MATERIAL: 80% cotton 20% polyester
OTHER: 93% cotton 7% elastanee (rib cuff)

FIT: regular
SIZE: XS-XXL
WEIGHT: 530 g (M)



Majolica Blue



Poinciana



Majolica Blue



LEAD SHORTS NEW

RRP WSP

ACTIVITIES: Climbing, Bouldering, Yoga
BENEFITS: breathable, lightweight, stretch, quick dry

- PRODUCT FEATURES:**
- wide elastic waistband
 - waist internal drawcord
 - hand pockets and 1 rear pocket
 - full inseam gusset
 - back loop detail

MAIN MATERIAL: 94% polyamide 6% elastan
OTHER: 88% polyester 12% spandex (waistband cuff)

FIT: regular
SIZE: XS-XL
WEIGHT: 180 g (M)



Majolica Blue



Dark Navy



Citronelle



Citronelle

MEGOS SHORTS NEW

RRP WSP

ACTIVITIES: Climbing, Bouldering
BENEFITS: breathable, durable, stretch

PRODUCT FEATURES:

- elastic waistband with internal drawcord
- hand pockets
- full inseam gusset for freedom of movement
- side pockets for brush
- back loop detail

MAIN MATERIAL: 97% cotton 3% elastane
FINISHING: stone GMT wash

FIT: regular
SIZE: XS-XL
WEIGHT: 225 g (M)



Poinciana



Enamel Blue



Dark Navy



Citronelle



Poinciana

CLIMBY SHORTS

RRP WSP

ACTIVITIES: Travel, Bouldering
BENEFITS: breathable, stretch, YKK zippers

PRODUCT FEATURES:

- partly elastic waistband with button and zip
- waistbelt loops
- 2 front pockets
- 2 rear patch pockets
- 1 thigh pocket with flap
- gusset for freedom of movement
- brush pocket

MAIN MATERIAL: 98% cotton 2% elastane
FINISHING: twill carbon peach, washed

FIT: regular
SIZE: S-XXL
WEIGHT: 295 g (M)



Majolica Exotic



Poinciana



Bayberry



Bayberry



MOONSTONE ^{3/4} PANTS NEW

RRP WSP

ACTIVITIES: Climbing, Bouldering
BENEFITS: breathable, lightweight, stretch, quick dry

- PRODUCT FEATURES:**
- wide elastic waistband
 - waist internal drawcord
 - hand pockets and 1 rear pocket
 - gusset for freedom of movement
 - ergonomic pre-shaped knees
 - brush loop and pocket
 - bottom leg drawstring regulation
 - back loop detail

MAIN MATERIAL: 94% polyamide
 6% elastan

FIT: straight
SIZE: XS-XL
WEIGHT: 220 g (M)



Dark Navy



Citronelle



reference
 colourway only



CLIFFBASE 3/4 PANTS

RRP WSP

ACTIVITIES: Climbing, Bouldering
BENEFITS: breathable, durable, stretch,
 YKK zippers

PRODUCT FEATURES:
 - partly elastic waistband with drawcord
 - 2 front pockets
 - Velcro fly opening
 - 1 rear pocket
 - gusset for freedom of movement
 - ergonomic pre-shaped knees
 - brush loop and pocket

MAIN MATERIAL: 97% cotton
 3% elastane
FINISHING: washed

FIT: regular
SIZE: XS-XL
WEIGHT: 280 g (M)



Poinciana



Citronelle



Poinciana



DRIVE PANTS NEW

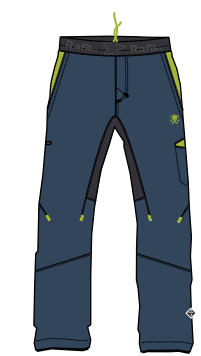
RRP WSP

ACTIVITIES: Climbing, Bouldering
BENEFITS: breathable, lightweight, stretch, quick dry

- PRODUCT FEATURES:**
- wide elastic waistband
 - waist internal drawcord
 - hand pockets and 1 rear pocket
 - gusset for freedom of movement
 - ergonomic pre-shaped knees
 - brush loop and pocket
 - bottom leg drawstring regulation
 - back loop detail

MAIN MATERIAL: 94% polyamide
 6% elastan

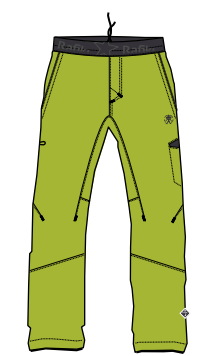
FIT: straight
SIZE: XS-XL
WEIGHT: 265 g (M)



Majolica Blue



Dark Navy



Citronelle



Citronelle



FACEROCK PANTS NEW

RRP WSP

ACTIVITIES: Climbing, Bouldering
BENEFITS: breathable, lightweight, stretch

PRODUCT FEATURES:
- wide elastic waistband
- waist internal drawcord
- hand pockets and 1 rear pocket
- gusset for freedom of movement
- ergonomic pre-shaped knees
- brush loop and pocket
- bottom leg drawstring regulation
- back loop detail

MAIN MATERIAL: 98% cotton, 2% elastane denim
FINISHING: stone GMT wash

FIT: regular
SIZE: S-XL
WEIGHT: 420 g (M)



Night Denim



Night Denim

RESULT PANTS

RRP WSP

ACTIVITIES: Climbing, Bouldering
BENEFITS: breathable, stretch, durable, YKK zippers

PRODUCT FEATURES:
 - elastic waistband with button and zip
 - 2 front pockets
 - 2 large low-set rear pockets
 - gusset for freedom of movement
 - ergonomic pre-shaped knees
 - bottom leg regulation with drawstring
 - side loops for brush

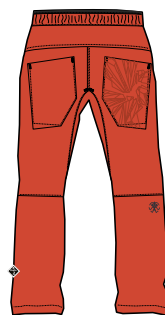
MAIN MATERIAL: 97% cotton 3% elastane

FINISHING: washed

FIT: regular
SIZE: XS-XL/ XS+/ S+/ M+
WEIGHT: 400 g (M)



Majolica blue
NEW



Poinciana
NEW

reference
colourway only

BOMBER PANTS

RRP WSP

ACTIVITIES: Climbing, Bouldering
BENEFITS: durable, stretch, YKK zippers

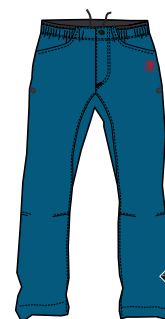
PRODUCT FEATURES:
 - elastic waistband with drawcord, button and zip
 - 2 front pockets
 - 1 rear pocket
 - gusset for freedom of movement
 - ergonomic pre-shaped knees
 - bottom leg regulation with drawstring
 - side loops for brush

MAIN MATERIAL: 97% cotton 3% elastane
FINISHING: stone GMT wash

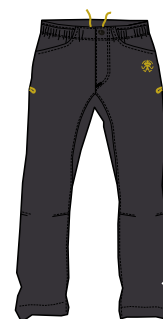
FIT: regular
SIZE: S-XXL
WEIGHT: 540 g (M)



Citronelle



Seaport



Dark navy



Citronelle

FAUX PANTS

RRP WSP

ACTIVITIES: Travel, Bouldering
BENEFITS: breathable, stretch, YKK zippers

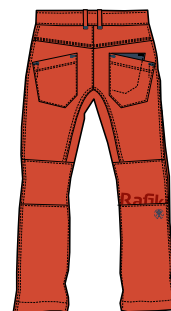
PRODUCT FEATURES:
 - waistband with button and zip
 - waistbelt loops
 - 2 front pockets
 - 2 rear patch pockets
 - gusset for freedom of movement
 - ergonomic pre-shaped knees

MAIN MATERIAL: 98% cotton 2% elastane
FINISHING: twill carbon peach , washed

FIT: regular
SIZE: S-XXL
WEIGHT: 390 g (M)



Majolica Exotic



Poinciana



Bayberry

Poinciana



VERTIC PANTS

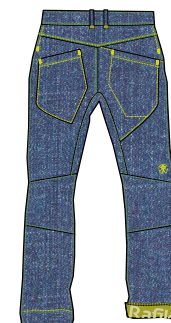
RRP WSP

ACTIVITIES: Travel, Bouldering
BENEFITS: durable, breathable, stretch, YKK zippers

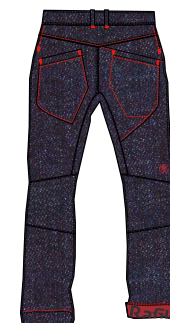
PRODUCT FEATURES:
 - waistband with button and zip
 - waistbelt loops
 - 2 front pockets
 - 2 large low-set rear pockets
 - gusset for freedom of movement
 - integrated shell fabric loop for brush

MAIN MATERIAL: 98% cotton
 2% elastane denim

FIT: straight
SIZE: S-XXL
WEIGHT: 620 g (M)



Denim



Night Denim

Denim





CHILDREN'S COLLECTION

BOBBY JR

SHORT SLEEVE T-SHIRT

RRP WSP

ACTIVITIES: Climbing, Bouldering, Travel
BENEFITS: breathable, soft

PRODUCT FEATURES:
 - prints variation

MAIN MATERIAL: 100% organic cotton / single jersey
 160
FINISHING: fabric bio washed

FIT: regular
SIZE: 128, 140, 152
WEIGHT: 95 g [152]



reference
 colourway only



Lipstick red

Seaport

Blue bird

NEW

Poinciana

NEW

RUMNEY JR

SHORTS

NEW

RRP WSP

ACTIVITIES: Climbing, Bouldering
BENEFITS: breathable, durable

PRODUCT FEATURES:
 - elastic waistband
 - ergonomic shaped knees
 - 2 front pockets
 - rear pocket

MAIN MATERIAL: 97% cotton 3% elastane

FIT: regular
SIZE: 128, 140, 152
WEIGHT: 130 g [152]



Majolica Blue

Citronelle



reference
 colourway only

PEDRO JR ^{NEW} PANTS

RRP WSP

ACTIVITIES: Climbing, Bouldering
BENEFITS: breathable, durable

PRODUCT FEATURES:

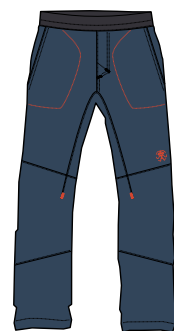
- elastic waistband
- ergonomic shaped knees
- 2 front pockets
- rear pocket

MAIN MATERIAL: 97% cotton
 3% elastane
FINISHING: bio washed

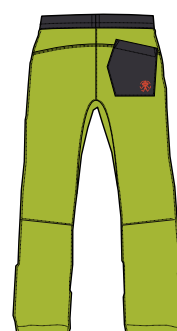
FIT: regular
SIZE: 128, 140, 152
WEIGHT: 190 g (152)



Majolica Blue



Majolica Blue



Citronelle

PIKE JR PANTS

RRP WSP

ACTIVITIES: Climbing, Bouldering, Travel
BENEFITS: breathable, durable

PRODUCT FEATURES:

- elastic waistband with regulation
- ergonomic shaped knees
- 2 front pockets
- rear pocket
- bottom leg regulation with drawstring
- side loops for brush

MAIN MATERIAL: 70% cotton 30% nylon
FINISHING: peach

FIT: regular
SIZE: 128, 140, 152
WEIGHT: 220 g (152)



Paradise pink



Majolica blue



Paradise Pink



ACCESSORIES

TALUS

CLIMBING BAG

NEW

MADE IN EU

RRP WSP

ACTIVITIES: Climbing, Bouldering, Travel
BENEFITS: YKK zippers

PRODUCT FEATURES:

- full-length zipper on the back
- 1 outside zippered pocket
- 2 side pockets
- 1 inside zippered pocket
- tarp included (135x125 cm)
- 2 gear loops
- ergonomic shaped sleeves
- shoulder straps with webbing hip belt

MAIN MATERIAL: 100% polyester
FINISHING: PU coating / PVC coating (Tarpaulin) / DWR
SIZE: 55x35x25 cm
WEIGHT: 1000 g
CAPACITY: 45 l



Anthracite

ROPER

ROPE BAG

RRP WSP

ACTIVITIES: Climbing, Bouldering, Travel

PRODUCT FEATURES:

- 2 compression straps
- adjustable shoulder strap
- integrated rope tarp with colour loops
- hold ropes up to 80 m

MAIN MATERIAL: 100% polyester 600D
TARP MATERIAL: 100% polyester 210D coated
TARP SIZE: 135x125 cm
WEIGHT: 590 g
CAPACITY: 25 l



Sulphur Spring



Charcoal Gray

FLINT

BAG

NEW

MADE IN EU

RRP WSP

ACTIVITIES: Climbing, Bouldering, Travel

MAIN MATERIAL: 100% organic cotton
SIZE: 38x45 cm
WEIGHT: 200 g
CAPACITY: 8 l



Charcoal Gray



Majolica Blue



Poinciana

CARRYALL

BAG

NEW

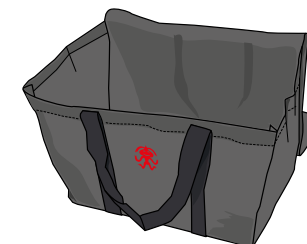
RRP WSP

ACTIVITIES: Climbing, Bouldering

PRODUCT FEATURES:

- easy to clean
- space-saving
- inside pocket
- 2 shoulder straps
- integrated tarp (60x60 cm)

MAIN MATERIAL: 100% polypropylene
SIZE: 60x35x45 cm
WEIGHT: 210 g
CAPACITY: 70 l (25kg)



Charcoal gray

CHINO CAP

RRP WSP

ACTIVITIES: Climbing, Bouldering, Travel

MAIN MATERIAL: 100% ACRYLIC

SIZE: UNI
WEIGHT: 80 g



Dark navy

Bright White/ Paradise Pink

CRUZ CAP

RRP WSP

ACTIVITIES: Climbing, Bouldering, Travel

MAIN MATERIAL: 100% ACRYLIC

SIZE: UNI
WEIGHT: 115 g



Pewter/ citronelle

Paradise Pink/ citronelle

ROCKY CAP

RRP WSP

ACTIVITIES: Climbing, Bouldering, Travel

MAIN MATERIAL: 100% ACRYLIC

SIZE: UNI
WEIGHT: 90 g



Anthracite

Citronelle

FLEX TRUCKER CAP

RRP WSP

ACTIVITIES: Climbing, Bouldering, Travel

MAIN MATERIAL: 60% COTTON, 40% POLYESTER

SIZE: UNI
WEIGHT: 90 g



Anthracite

Majolica blue



#lesstalkmorechalk

SCOOP CHALK BAG

RRP WSP

ACTIVITIES: Climbing, Bouldering

- PRODUCT FEATURES:**
- reinforced neck with drawstring closure
 - 2 loops for belt fastening (belt included)
 - brush loop
 - fleece-lined interior

MAIN MATERIAL: 97% cotton 3% spandex
LINING: 100% polyester
SIZE: UNI
WEIGHT: 100g



CHALK MAGNESIUM

RRP WSP

ACTIVITIES: Climbing, Bouldering

- PRODUCT FEATURES:**
- eco cosmetics product (not chemicals)
 - 100% healthy

MAIN MATERIAL: 100% CHALK





PROMOTION

BOW FLAG

A classic advertising flag available in size S or L. It includes printed textile, flagpole and stand for indoor and outdoor use.

SIZE:
S - 55x200 cm
L - 80x340 cm



BANNER

Banner PVC banner with metal mesh around the perimeter for mounting.

SIZE:
3x1 m



LOGO STAND

PDS-cardboard display stand, two-side print, suitable even for suspension in, e.g. shop windows.

SIZE:
35 cm - Circle diameter



CUBE

Image paper cube, two sides with logo print, three sides with image photo print.

SIZE:
30x30 cm



HANGERS NEW

Hand made macrame bracelet of various colours with metal Rafiki pendant.



STICKERS

Set of 11 pcs self-adhesive labels on A6 sheet. 50 pc per package.

SIZE:
105x148 mm



Price and minimum quantity of all promotional products are on request.

TRESS RF T-SHIRT

118RF0370KT

RRP WSP

MAIN MATERIAL: 60% cotton, 40% polyester

FIT: regular
SIZE: 36-42
WEIGHT: 100 g (36)



Very berry

Price and minimum quantity of all promotional products are on request.

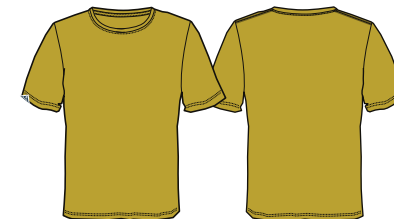
SLACK BASIC T-SHIRT

118RF0369KT

RRP WSP

MAIN MATERIAL: 100% cotton

FIT: regular
SIZE: S-XL
WEIGHT: 150 g (M)



Golden spice



Edita Vopatova
One of the best Czech climbers. She has visited climbing areas throughout the World. She has also made 2 x 8c ascents in Frankenjura.

Jakub Konecny
Junior Champion of Europe, Champion of the Czech Republic, World Cup competitor, 8c+ rock climber.

Martin "Dzangli" Jungling
Route setter and one of the most universal Czech climbers. Dzangli can climb 8c or X/c routes or also 8B+ - 8B+ FB boulders.

Eric Albertini
Talented Italian rock climber who has made a second ascent of Ultimatum 9a+ in Arco and also has made a lot of FA 8c's.

Moritz Welt
Promising young climber from Frankenjura who has made a third ascent of Heiliger Gral 9a or repeat boulder Hips don't lie sit 8B+.

Lucka Rabadova
Talented young Czech rock climber and competitor

Rob Denayer
Expert Belgian climber who climbs 8B-8B+ boulders in Fontainebleau, World Cup competitor.

Stepan Wolf
Promising Czech 8c rock climber and competitor.

#rafikiteam

AMBASSADORS

rafikiclimbing

apparel for climbers made by climbers



#rafikiclimbing



www.facebook.com/rafiki.climbinglife

follow us on
SOCIAL MEDIA

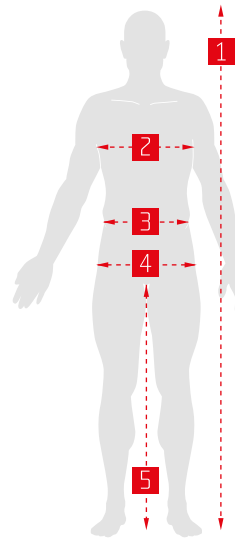


WOMAN	32	34	34+	36	36+	38	40	42	44
	XXS	XS	XS+	S	S+	M	L	XL	XXL
BODY HEIGHT 1	161-165	163-167	165-169	165-169	167-171	167-171	169-173	171-175	172-176
CHEST 2	77-80	81-84	81-84	85-88	85-88	89-92	93-96	97-100	100-103
WAIST 3	59-62	63-66	63-66	67-70	67-70	71-74	75-78	79-82	83-86
HIPS 4	85-88	89-92	89-92	93-96	93-96	97-101	102-105	106-109	110-113
INSEAM 5	76-79	78-81	82-85	80-83	84-87	82-85	84-87	86-89	88-90

MAN	XS	S	S+	M	M+	L	XL	XXL
	44	46	46+	48	48+	50	52	54
BODY HEIGHT 1	163-167	171-176	174-179	174-179	180-184	180-184	182-186	184-188
CHEST 2	85-89	90-94	90-94	95-99	95-99	100-104	105-109	110-114
WAIST 3	73-77	78-82	78-82	83-87	83-87	88-92	93-97	98-102
HIPS 4	87-91	92-96	92-96	97-101	97-101	102-106	107-111	112-116
INSEAM 5	82-84	83-85	87-89	84-86	88-90	87-89	89-91	90-92

KID	128	140	152
	6-7y	8-9y	10-11y
BODY HEIGHT 1	122-128	134-140	146-152
CHEST 2	64	69	74
WAIST 3	58	63	68
HIPS 4	70	75	80
INSEAM 5	56	64	73

- All sizes are in centimetres .
- The measurements are only indicative .
We recommend to try out our clothes personally .





The world known brand stands for highly functional and top quality zippers ensuring comfort and reliability even during long-term use. YKK zippers are waterproof, windproof, highly durable, able to withstand extreme weather and therefore are frequently used in technical sports apparel.



The Polar Stretch material is hard-wearing, pliable and flexible in all directions, lightweight and easy to maintain. Thanks to the structure of the textile the final apparel is perfectly breathable and transports body odours away. The apparel made from Polar Stretch materials is used as the second or light outer layer, does not restrict movement and is ideal for active sports.



Insulation material combining benefits of polyester fibre and duck down (90 down/10 feather). The main advantage is decreased absorption of dampness with maintained excellent thermal insulation and low weight.



SEE® eco-warm insulation more than 30% of fibres made with DuPont™ Sorona® a renewable sourced polymer that is made in part with annually renewably plant-based ingredients. Production of Sorona® also requires 30% less energy and reduces greenhouse gas emissions by 63% over and equal amount of petrochemical-based Nylon 6. See eco-warm insulation is excellent in both warmth sealing and breathability. It can perfectly prevent the cold air while effectively remove excessive moisture from the body thus keeping one comfortably warm and dry. Compare with similar products, SEE® insulation can retain its shape with excellent durability after repeated washes. It is ideal choice for both high-end garments in terms of shape retention and smart active-wear in terms of comfort and light-weight. SEE Insulation has passed BLUE SIGN certificate.



Cotton generally enjoys a positive image but its production process does not exactly gain any plaudits from an environmental aspect. Production of organic cotton is more eco-friendly. It is grown without pesticides, synthetic fertilizers and genetically engineered seeds having low impact on the environment, preventing the waste of water, replenishing the soil and promoting the balance of ecosystems. All the benefits of conventional cotton such as softness, comfort and hypoallergenic are remaining.



Classic fabrics are synonymous with high durability and are the fabrics of choice in some of the world's toughest environments. With over thirty years of trusted, rugged performance, the fabrics provide durable performance for a variety of end uses, including packs, luggage, footwear and performance apparel. CORDURA® Classic fabrics are resistant to tears, scuffs and abrasions, so products made with the fabric provide long-lasting durability.



The bluesign® system focuses on chemicals and their impact on resources, people and the environment. The bluesign® system aims at reducing the negative impact that chemicals may have on people and on the environment, ensuring a responsible use of resources and guaranteeing the highest level of consumer safety. Rafiki brand uses SEE® eco warm insulation which is made according to the bluesign® standard.

BIOWASH

Biowash is a wet, permanent finish that is usually done before dyeing. Softness of the fabric increases after adding bio wash as during touch we do not feel rough ends on the fabric. Its gentleness increases the fabric life and makes the clothing more durable. Bio wash has replaced chemicals that were earlier harsh breaking the fabric and decreasing its life. It also increases the lustre and shine on the clothes as compared to chemical soaps.

It also protects our skin from various ailments and allergies that can be caused by other chemical washes. It also preserves the colour of your garments thus preventing colour loss or shading of the garments.

Using of bio wash has been good for the environment too, as it is a natural chemical, nature easily breaks it down to lower components that are not harmful to humans and animals both.

SILICON WASH

Silicon wash gives durable softness, elastic handle to the garment. It helps to antipilling affects, dimensional stability, tear resistance as well as the fabrics to be cut and sewn more easily allows and improving wears and easy care properties.

Rafiki reserves the right to perform changes in the products presented in this workbook. Any part of this presentation cannot be reproduced without permission of Rafiki. Photographers: Jakub Cejpek, Pavel Nesvadba, Monika Brkalova, Franz Kaiser, Marek Jedlicka, Jakub Fric, Lukas Biba, Jiri Klir, Adam Masik, Jaroslav Sikula, Eric Albertini's archive, Moritz Welt's archive, Jakub Konecny's archive, Rob Denayer's archive, Edita Vopatova's archive, Stepan Wolf's archive. Author Interviews: Edita Vopatova – Michal Bulicka, Moritz Welt – Adam Masik



rafiki.cz

Americká 54 | 301 00 Plzeň | Czech Republic
tel.: + 420 379 200 666 | office@rafiki.cz



www.facebook.com/rafiki.climbinglife



[#rafikiclimbing](https://www.instagram.com/rafikiclimbing)