

MADE IN
EUROPE



DIRECTALPINE

TECHNICAL OUTDOOR WEAR

summer 2018

COLLECTION SUMMER 2018 – INTRODUCTION

Friends in Gesäuse

We have a new summer collection ready for you.

Before I go on to tell you about the new products and innovations I can't pass on without mentioning our recent trip to Gesäuse, Austria.

Our whole firm enjoys countryside, mountains and adventures so we all set off **together again to test out some prototypes.**

The beautiful, **compact rockface, Festkogel** was just the right challenge.

Early in the morning, on the scree slope just below the belaying point we see a lone figure. So early? And alone? But there's something about him that looks familiar....

That lone mountain pilgrim is none other than our old friend Ewald Rossbach, who used to be our Austrian distributor.

Ewald had decided, after years of bivouacking up in the mountains, to spend a romantic night under the stars in his favorite stamping ground.

An unbelievable coincidence! This was our first time here in Austria. And just that day, purely by chance, we meet precisely at that time. And if this wasn't enough of a coincidence, next in our plan is Steyerweg, the same route as Ewald's.

Ewald took over distribution for Directalpine years ago. He did a huge job for us. He's a great guy and a real professional. Ewald was one of those who showed us that Direct's strategy of **high quality and functionality without compromise** was the right course to follow.

He showed that even products from a small family firm can find their market niche. Along that long journey we've met lots of wonderful people who've helped us in this.



Jindřich Hudeček - Patagonia
(development, owner)



Kája Ogurčáková (quality control)



Martin Munzar (business)



Radek Nováček + D.A. Team - Festkogel
(development, owner)



Honza (marketing)
Ondra (business)
Pavol (development)
Radek (development, owner)



Václav Novotný - High Tatras
(production)

And the beautiful thing about it is, that what started out as a business relationship has gradually grown into a friendship. This meeting below Festkogel was literally a confirmation of fate.

A month later. After a wonderful day's skiing we're sitting in a similar group in the guest house in Johnsbach savoring some Kasperknödlsuppe and the local beer.

Next to us some Austrians are chatting, clearly in a good mood, in fact they even start yodeling – something amazingly exotic for us.

In the course of the evening our table eventually joined up with theirs and we tried yodeling

together and even discovered we know some of the same Czech and Austrian songs.

We enjoyed this relaxing atmosphere long into the night. Here I finally came to understand that this is what a connected Europe really means. Not the trade zones, European parliament, contracts or the Euro. But just this kind of friendship, neighborliness and commonality.

That evening in Austrian Johnsbach I felt quite at home. Amongst people who just a few hours previously had been unknown to me, I at once felt as if I was with friends in my own home village.

Talk eventually turned to DIRECTALPINE and it turns out that one of our new friends has a pair of Direct pants. And for him and his friends it comes as a great surprise that here they are face to face with the whole team who developed them, **including the company owner, Radek Nováček** with the creators of the pants and jackets which they wear hiking, and that the people behind DIRECTALPINE products are not smooth-ironed tie-wearing execs, but people who live for the mountains. And that these wonderful things are manufactured just next door by people on the same wavelength as them.

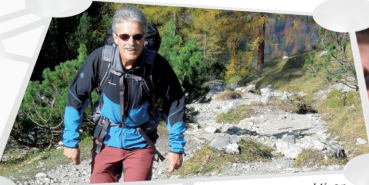
For me, it's a great reward to see that customers all over Europe trust in our products. And for me it is a personal bond. Our customers, whether existing or future customers, will never be disappointed. Just as we wouldn't let down a good friend.

And we firmly believe that DIRECT ALPINE

clothing will be just such a friend to you.

I wish you many happy encounters this year, unforgettable times in the mountains and the company of good friends you can rely on.

Ondřej Neuman



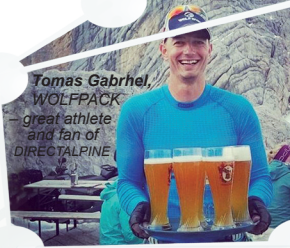
Wolfgang (Wolfgang Fischle – Vertreter DE, aktiver Trekker und super Profi)



Joachim (Joachim Kraft – Vertreter DE, aktiver Sportler und bester Vater)



Carsten (Carsten Nitschke – Husky Leipzig, bester Sportler in Horka)



Tomas Gabrhel, WOLFPACK great athlete and fan of DIRECTALPINE



Tomas Krpata, Rock Point – expert on quality outdoor clothing and beer. Also perfect dad.



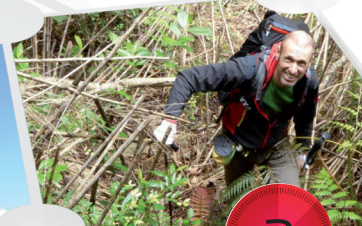
Petr Bojar, Hanibal sport shop manager. He loves DIRECTALPINE, climbing and watching movies.



Markus Pucher - Patagonia (Directalpine Test Team)



Gerald (Gerald Stelzig – Importeur Österreich, UIAGM Bergführer, Virtuos von Klettern)





feedback:

Odpověděli jste dne 20.4.2016 10:46.

Od: Henrik Hofmeister
Komu: Ondřej Neuman
Předmět: Re: fertig

Guten Morgen Ondra,

gestern habe ich meine Jacke erhalten. Vielen lieben Dank! Perfekte Qualität. Bestell bitte der Schneiderin ein großes Lob von mir.

Nun kann es wieder mit Freude regnen!

Danke, danke, danke für den Service!

;)

Henrik

2016-04-14 12:19 GMT+02:00 Ondřej Neuman

Hi Henrik, Jacke ist fertig, wird heute zu dir gesa

liebe Grüße, Ondra

Od: Philipp

Komu: Ondřej Neuman

Odesláno: po 16.5.2016 15:17

Předmět: Re: Reparatur von TRANGO - Pro

Hi Ondra,

vielen Dank, Jacke ist nun wieder hier und die Arbeit sieht super aus.

Es freut mich das es noch Hersteller mit einem super Support und kundenfreundlichem, persönlichen Kontakt gibt. Macht weiter so.

Viele Grüße

Philipp

Am 06.05.2016 um 14:50 sch



Od: Jiří Tomeš - ProExtrem
Komu: Ondřej Neuman
Odesláno: pá 15.1.2016 13:21
Předmět: Kalhoty Cascade

Dobrý den
Dovolte abych vám poděkoval za perfektní a velice rychlou opravu mých kalhot Cascade!
Musím říci že jsem se s tak dobrým a vstřícným přístupem u žádné jiné firmy nesetkal. Proto se moc omlouvám ta to, že jsem byl v prvním mailu tak trochu jedovatý :-
Jste prostě profíci a děláte TOP věci !! :-;) Budu všude chválit!

S pozdravem

Jirka Tomeš

Odpověděli jste dne 1.8.2015 6:57.
Odesláno: po 31.8.2015 8:03
Předmět: FW: Anfrage nach Katalog

-----Original Message-----

From: Gerhard Eisele
Sent: Friday, August 28, 2015 2:32 PM
To: Michal Tichý
Subject: Anfrage nach Katalog

Hallo,

durch Zufall bin ich 2011 über die Hose Cascade auf die Marke Directalpine gestoßen nach wie vor höchst begeistert. Zwischenzeitlich trage ich noch eine Cascade Plus, die Jacke Cerro Torre und Guide, sowie die Weste Attac. Man kann sagen, ich bin ein richtiger Fan Ihrer Marke geworden. Mich überzeugen in erster Linie die Materialien und deren Robustheit, der Material-Mix und der schlanke Schnitt. Gerade im rauen Einsatz in den Bergen. Meine Frage an Sie ist jetzt, ob es möglich ist, dass Sie mir einen aktuellen Produktkatalog zusenden. Auf Ihrer homepage ist nur der Katalog aus 2014 zu finden. Gerne hätte ich jedoch einen aktuellen Katalog (2015 oder gar 2016 falls möglich)

Ich bin als Fachführungsleiter für Bergsteigen und Hochtouren in der DAV-Section Dementsprechend oft in den Bergen unterwegs und mit vielen Leuten in Kontakt. Würde mich freuen, wenn es eine Möglichkeit gäbe.

Danke im Voraus und viele Grüße

Gerhard Eisele

Odpověděli jste dne 9.8.2013 12:50.

Od: Wolfgang Fischle
Komu: Ondřej Neuman
Kopie:
Předmět: Test Patrol

Hallo Ondra,
die Patrol wurde bei einer Hochtouren getestet, und kam sehr gut an: „das ist eine sehr gute Hochtourenhose mit einem klasse Preis-/Leistungsverhältnis. Da fehlt nur noch ein Belüftungsschlitzen an den Beinen, dann wäre das eine ideale Hose, unschlagbar“

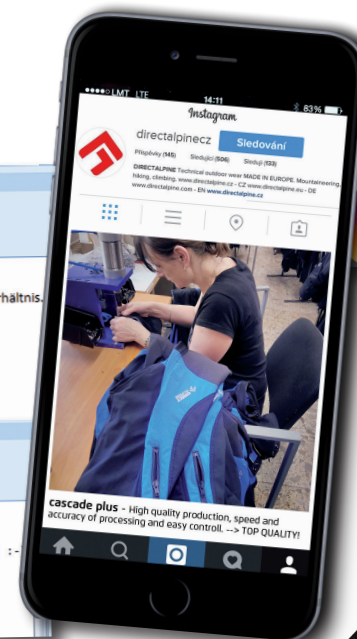
Das ist das Testergebnis, ich hoffe, daß der Händler mit einem kleinen Auftrag für Sommer 2014 beginnt.

Grüße
Wolfgang

TESTED IN PATAGONIA
FIRST WINTER SOLO OF
CERRO POLLONE
PERFECT !! DANKE!

MARKUS PUCHER
SEPTEMBER 2015

Find us on
Facebook



MOUNTAIN TOP SERIE



The Mountain Top Serie of technical models is intended for demanding activities in mountain conditions, for expeditions and for other extreme activities. During the development of this clothing we stress maximum utility value, comfort of movement and protection of the user. We use the latest technology and cutting-edge components, and we carefully select intelligent, multifunctional materials which guarantee excellent properties and parameters even at relatively low weights. We focus maximum attention on the overall processing of the models and their cut. The characteristic traits of this range are the technical design, functional accessories, details for the given use and practical colours. For our customers the products of the Mountain Top Serie represent their assurance in the mountains, on expeditions, on cliffs or for regular outdoor use. They know that they can always rely on them!

The Mountain Top Serie represents the traditional values of the brand DIRECTALPINE – uncompromising quality, functionality and reliability.



guide



Excellent protective top jacket for the most demanding use. Ideal for mountain climbing, ski alpinism and trekking. Minimal weight along with the resilience of a conventional hardshell. The combination of resilient materials with minimum weight, precise anatomical cut, many technical details and use of modern technologies makes it the ideal functional backup jacket which never disappoints. Assurance, comfort and protection against bad weather during all your adventures in the countryside.

- Extended front part of the collar for face protection + ventilation openings, Asymmetrical central zipper not interfering with the face; Optional fixation (with magnets) of the unbuttoned wedge inside the hood.
- Front large pouch pocket (for keeping bulky things); inner zip pocket; additional bicep pocket with removable Recco signal reflector.
- Back section flexibly contracted at waistline (for better adhesion to the back).
- Significantly prolonged back section providing sufficient protection.
- Excellent permeability.
- Vents in the sides easily accessible even with a rucksack, zips reaching the front part allowing access to pockets of lower layers.



ventilation holes

magnet fixation

packed jacket

protective flap



black / anthracite



red / anthracite



blue / anthr. / gold



gold / blue



red / blue
limited edition

guide	
Weight:	390 g (L)
Material:	Hardshell 3-layer laminated GELANOTS HB - Made by Toyota Tsusho (Japan) 1-layer - outer: high strenght functional fabric 100% PAD, DWR (PFOA free, ECO friendly) 2-layer - membrane: GELANOTS - 20.000 mm H2O/39.000 g/m2/24 hr., 100% PUR 3-layer - inner: 100% PES Reinforced shoulders, chest pocket and back: GELANOTS 20.000 mm H2O/20.000 g/m2/24 hr., DWR (PFOA free, ECO friendly) 100% sealed seams
Colours:	1. black / anthracite 2. red / anthracite 3. blue / anthracite / gold 4. gold / blue 5. red / blue - limited edition
Sizes:	S, M, L, XL, XXL
Style:	men REGULAR FIT



• Fixed hood with multidirectional adjustment. Possibility of pulling over the helmet.

• New stronger central zip with two two-way sliders with added protective flap.

• Anatomically shaped sleeves; regulation with velcro cuff.

• Shortened front section for freedom of leg-movement during ascents. Extended backside.



Jindřich Hudeček - Patagonia (owner)

guide lady



Ladies' version of the successful model GUIDE. A light protective ladies' jacket intended for the regular outdoor and for the most demanding mountain conditions. Ideal for mountain climbing, ski alpinism, trekking and hiking. Minimum weight and also lifespan and robustness of a conventional hardshell. The combination of resilient materials with minimum weight, precise anatomical cut, many technical details and use of modern technologies makes it the ideal functional backup jacket which never disappoints. Assurance, comfort and protection against bad weather during all your adventures in the countryside.

- Shaped front part of collar. The asymmetrical zip does not go up to the face. Possibility of securing (by magnets) undone wedge inside hood.
- Large bellows pocket at the front; one internal zip pocket; additional pocket on sleeve with space for Recco signal reflector.
- Vents in the sides easily accessible even with a rucksack, zips reaching the front part allowing access to pockets of lower layers.
- Back part with elastic regulation of waist for ideal shaping of female figure.
- Excellent permeability of used material.



guide lady	
Weight:	360 g (M)
Material:	Hardshell 3-layer laminated GELANOTS HB - Made by Toyota Tsusho (Japan) 1-layer - outer: high strength functional fabric 100% PAD, DWR (PFOA free, ECO friendly) 2-layer - membrane: GELANOTS - 20.000 mm H2O/39.000 g/m2/24 hr., 100% PUR 3-layer - inner: 100% PES Reinforced shoulders, chest pocket and back: GELANOTS 20.000 mm H2O/20.000 g/m2/24 hr., DWR (PFOA free, ECO friendly) 100% sealed seams
Colours:	1. black / anthracite 2. red / anthracite 3. blue / anthracite / rose 4. gold / rose
Sizes:	XS, S, M, L, XL
Style:	lady REGULAR FIT



- Fixed hood with multidirectional adjustment. Possibility of pulling over the helmet.

- New stronger central zip with two two-way sliders with added protective flap.

- Shortened front section for freedom of leg-movement during ascents. Extended backside.

- Anatomically shaped sleeves; regulation with velcro cuff.



Niky + Terka - Directalpine test team



midi



Very lightweight upper reserve pants with excellent compressibility. A high quality functional 3-layer laminate with the weight of a two and a half layer one, with significantly higher lifespan and resilience. Comfortable and stretchy material. Technical treatment and details allowing year-round seasonal use. Ideal reserve pants for mountain hiking, mountain climbing, ski touring and all outdoor activities.

- Comfortable elastic waistband with possibility to use belt, clip-on braces.
- One zip pocket which also serves as a practical transport pocket when the pants are rolled up.
- Fly with water-repellent zip with two way sliders.
- Water-repellent side zips asymmetrically moved to the rear parts (elimination of damage) allowing ventilation and, most importantly, allowing the pants to be put on over boots (including ski boots).
- Lower edge of legs with circumference regulation, sufficiently wide to fit even over ski boots, with additional securing hook for clipping the lower part onto laces.
- Inner side of knees reinforced with wear-resistant fabric.



midi	
Weight:	470 g (L)
Material:	Hardshell 3-layer laminated DERMIZAX 1-layer - outer: high strength functional fabric 100% PAD, DWR (PFOA free, ECO Friendly) 2-layer - membrane: DERMIZAX - 20.000 mm H ₂ O / 8.000 g/m ² /24 hr., 100% PUR 3-layer - inner: 100% PAD Reinforcements: Kevlar 87 % PAD + 13 % aramid (PAD) 100% sealed seams
Colours:	1. black
Sizes:	S, M, L, XL, XXL
Style:	men REGULAR FIT





A very light universal jacket intended for all mountain, climbing and any other outdoor activities. The anatomically well-designed cut and stretchiness ensures the user maximum comfort. The used material (Cordura) ensures sufficient protection against the wind and also ensures mechanical resilience and long lifespan of this jacket. Low weight, good packability, excellent permeability. The ideal choice for climbers, alpinists or outdoor enthusiasts and for everyday use.

- Shaped collar with simple, functional and practical connecting hood.
The hood does not restrict your view or movement at all, can even be used very well under a helmet.
- Possibility of easy stowage in hood and attachment to harness or backpack.
- The asymmetrical zip does not go up to the face.
- Two roomy side zip pockets located higher for accessibility with backpack waist strap, one practical sleeve pocket.
- Extended rear part.
- Anatomically shaped sleeves terminated with elastic trim with possibility of pulling over wrist, thumb hole.
- One-handed drawing of shaped lower edge.
- Cordura WBL system (Wicking, Barrier, Lightweight), Mixed fabric - Coolmax® (for moisture removal) + Cordura (for abrasion-resistance and durability), partial resistance against water and wind.



black darkgrey / blue red greyblue blue

dru	
Weight:	380 g (L)
Material:	Cordura® WBL system - Base: lightweight abrasion resistant fabric 46 % Cordura® (PAD) + 32 % Tactel® (PES) + 14 % Lycra® (PUR) + 8 % Coolmax® (PES), DWR (PFOA free, ECO Friendly) Fabric is certified as bluesign® approved
Colours:	1. black 2. darkgrey / blue 3. red 4. greyblue 5. blue
Sizes:	S, M, L, XL, XXL
Style:	unisex



Tomáš - Tre Cime di Lavaredo (Directalpine test team)



Ondra Neuman - Gesäuse (business)

Radek Nováček - Gesäuse (owner + development)

Honza Drahotka (marketing)



cruise



cruise lady



Light technical trousers for universal use (trekking, climbing, hiking, biking, city). Accurate, comfortable cut fits snugly and excellently copies the body shape. The fabrics used are highly elastic, durable and light-weight; treated for quickdrying. Comfortable and light for universal wear.

- Reinforced waistband, adjustable belt with clasp.
- Two front pockets and one side pocket with zip.
- Shaped knees.
- Simple free finish to trouser-leg bottoms - easy to adjust.

- Contrasting stitching.
- Cordura WBL system (Wicking, Barrier, Lightweight), Mixed fabric - Coolmax® (for moisture removal) + Cordura (for abrasion-resistance and durability), partial resistance against water and wind.



reflexive stitching



((SHORT SIZES))

N.O.S.
NEVER OUT OF STOCK



black

darkgrey / black

red / black

greyblue / black

greyblue / gold

blue / black

cruise	
Weight:	315 g (L)
Material:	Cordura® WBL system - Base: lightweight abrasion resistant fabric 46 % Cordura® (PAD) + 32 % Tactel® (PES) + 14 % Lycra® (PUR) + 8 % Coolmax® (PES), DWR (PFOA free, ECO Friendly) Fabric is certified as bluesign® approved
Colours:	1. black 2. darkgrey / black 3. red / black 4. greyblue / black 5. greyblue / gold 6. blue / black
Sizes:	S, M, L, XL, XXL black: M-short, L-short, XL-short, XXL-short greyblue / black: M-short, L-short, XL-short, XXL-short
Style:	men REGULAR FIT



N.O.S.
NEVER OUT OF STOCK



black

black / rose

darkgrey

red

blue

cruise lady	
Weight:	280 g (M)
Material:	Cordura® WBL system - Base: lightweight abrasion resistant fabric 46 % Cordura® (PAD) + 32 % Tactel® (PES) + 14 % Lycra® (PUR) + 8 % Coolmax® (PES), DWR (PFOA free, ECO Friendly) Fabric is certified as bluesign® approved
Colours:	1. black 2. black / rose 3. darkgrey 4. red 5. blue
Sizes:	XS, S, M, L, XL
Style:	lady REGULAR FIT





cruise tech



A new addition to our collection based on the cut of our popular Cruise model. The precise, comfortable cut fits perfectly and copies the curves of the body. These pants give increased freedom of movement due to the fitted gusset. They are made from a superb material (elastic Cordura) with high flexibility, outstanding wear resistance and low weight supplemented with a strong, elastic material with an inner Coolmax layer on the knees and seat. An elastic insert in the lower part of the leg allows these pants to be pulled over climbing or ski-alpine boots. This increases the functionality of the pants and makes them suitable for all-year-round use.

- Elasticated waist, adjustable belt with buckle.
- Two front pockets and one larger zip-pocket on the thigh.
- Shaped knee parts.
- Elasticated insert in the leg cuff.
- Reflective elements and stitching for nighttime visibility.
- Cordura WBL system (Wicking, Barrier, Lightweight) – Coolmax® mixed fibers (moisture removal) + Cordura (wear resistance and firmness), partial resistance to water and wind.



darkgrey / black
red
greyblue / black
blue / darkgrey

cruise tech	
Weight:	350 g (L)
Material:	Cordura® WBL system - Base: lightweight abrasion resistant fabric 46 % Cordura® (PAD) + 32 % Tactel® (PES) + 14 % Lycra® (PUR) + 8 % Coolmax® (PES), DWR (PFOA free, ECO Friendly) Fabric is certified as bluesign® approved Knees, back part: high strength functional fabric 78 % Nylon (PAD) + 10 % Coolmax® (PES) + 12 % Lycra® (PUR)
Colours:	1. darkgrey / black 2. red 3. greyblue / black 4. blue / darkgrey
Sizes:	S, M, L, XL, XXL
Style:	men REGULAR FIT



- Reflective elements and stitching for nighttime visibility.



cruise



cruise 3/4 lady



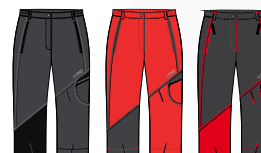
Attractively designed ¾ Capri pants for all-round use (trekking, hiking, cycling or around town). They have a modern asymmetrical design and close fitting cut that fits perfectly to the contours of your body to give perfect comfort. Made from an outstanding material (elastic Cordura) with high flexibility, wonderful durability and low weight, these light technically designed pants with a specially developed cut are recommended both for mountain conditions and for all outdoor activities and everyday wear.

- Reinforced waist, adjustable belt with buckle.
- Two front pockets and one side zip pocket.
- Shaped knees.
- Loose simple end of bottom edge of legs.
- Contrasting backstitching of trousers.
- Cordura WBL system (Wicking, Barrier, Lightweight), Mixed fabric - Coolmax® (for moisture removal) + Cordura (for abrasion-resistance and durability), partial resistance against water and wind.



darkgrey / black greyblue / black greyblue / gold blue / darkgrey blue / red limited edition

cruise 3/4	
Weight:	245 g (L)
Material:	Cordura® WBL system - Base: lightweight abrasion resistant fabric 46 % Cordura® (PAD) + 32 % Tactel® (PES) + 14 % Lycra® (PUR) + 8 % Coolmax® (PES), DWR (PFOA free, ECO Friendly) Fabric is certified as bluesign® approved
Colours:	1. darkgrey / black 2. greyblue / black 3. greyblue / gold 4. blue / darkgrey 5. red / blue - limited edition
Sizes:	S, M, L, XL, XXL
Style:	men REGULAR FIT



darkgrey / black red / darkgrey darkgrey / red

cruise 3/4 lady	
Weight:	238 g (M)
Material:	Cordura® WBL system - Base: lightweight abrasion resistant fabric 46 % Cordura® (PAD) + 32 % Tactel® (PES) + 14 % Lycra® (PUR) + 8 % Coolmax® (PES), DWR (PFOA free, ECO Friendly) Fabric is certified as bluesign® approved
Colours:	1. darkgrey / black 2. red / darkgrey 3. darkgrey / red
Sizes:	XS, S, M, L, XL
Style:	lady REGULAR FIT





Directalpine test team

Jaroslav Kupr - Lago di Garda
(Mountain Guide)

♂



- Reinforced waistband, adjustable belt with clasp.
- Two front pockets and one side pocket with zip.
- Simple free finish to trouser-leg bottoms.
- Pleasant length, above the knees.

- Cordura WBL system (Wicking, Barrier, Lightweight), Mixed fabric - Coolmax® (for moisture removal) + Cordura (for abrasion-resistance and durability), partial resistance against water and wind.



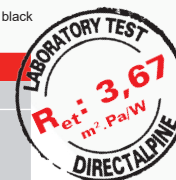
black

darkgrey / black

greryblue / black

blue / black

cruise short		
Weight:	210 g (L)	
Material:	Cordura® WBL system - Base: lightweight abrasion resistant fabric 46 % Cordura® (PAD) + 32 % Tactel® (PES) + 14 % Lycra® (PUR) + 8 % Coolmax® (PES), DWR (PFOA free, ECO Friendly) Fabric is certified as bluesign® approved	
Colours:	1. black 2. darkgrey / black 3. greyblue / black 4. blue / black	
Sizes:	S, M, L, XL, XXL	
Style:	men	REGULAR FIT



 **jorasses**



All-year-round sports jacket for active movement. It can also be used as base-layer insulation in colder conditions. A purpose-made hybrid combination of materials gives this garment increased functionality. This softshell jacket is perfect for sports activities in the countryside where its excellent breathability and high level of wind protection are most appreciated. Ideal for climbing, hiking, high-mountain hiking, MTB, cross-country skiing and alpine skiing. In short, a universal model for all outdoor activities.

- Anatomically shaped with a high collar and close-fitting hood.
- Shoulders and elbows reinforced with fray-resistant fibers.
- Zip pockets not reaching down to the waist and supplementary breast pocket.
- Shaped sleeves for free arm movement.
- Contrasting elastic inserts.
- Hybrid System - different pieces of material have been put together in such a way as to cope with the physiological demands they are expected to withstand.
- Drawstring on the shaped bottom edge that can be adjusted with one hand.



jorasses	
Weight:	505 g (L)
Material:	<p>A - Dynamic Soft Shell 1-layer - outer: 65 % Nylon (PAD) + 23 % PES + 12 % PUR - wind resistance, DWR (PFOA free, ECO Friendly) 2-layer - inner: microfleece 100% PES</p> <p>B - Sides, back: high strength functional fabric 78 % Nylon (PAD) + 10 % Coolmax® (PES) + 12 % Lycra® (PUR)</p> <p>C - Hood, forearms: Cordura® WBL system - 46 % Cordura® (PAD) + 32 % Tactel® (PES) + 14 % Lycra® (PUR) + 8 % Coolmax® (PES), DWR (PFOA free, ECO Friendly) - Fabric is certified as bluesign® approved</p> <p>D - Shoulders, elbows - reinforcement: 59 % Nylon (PAD) + 33 % PES + 8 % PUR</p>
Colours:	<p>1. black / grey 4. gold / blue</p> <p>2. black / blue 5. blue / red - limited edition</p> <p>3. blue / black / gold</p>
Sizes:	S, M, L, XL, XXL
Style:	men REGULAR FIT



attack



Innovated universal sports vest for active movement during trekking, climbing, on a bike, ski alpinism, cross-country skiing. The comfortable barrier material with high level of permeability along with anatomically precise cut ensures sufficient protection, a high level of mobility and good weight. The internal transport layer of the material increases the physiological functionality of the model.

- Anatomical close-fitting collar with circumference adjustment and a practical elasticated gusset with zipper – it allows you to wear vest over another layers of clothing.
- Close-fitting shaped armholes with elastic rim.
- Enlarged top breast zip pocket, large side zip pocket not reaching down to the waist.
- One additional internal mesh pocket with a strap to secure the contents of the pocket.
- Flat elasticated seams on entire vest.
- One-handed adjustment of shaped lower edge.
- Reflective details and logos for night identification.



Anatomical collar



black / black

black / blue

blue / gold

gold

attack	
Weight:	315 g (L)
Material:	Material: Dynamic Soft Shell 2-layer laminate: 1-layer - outer: 65 % Nylon (PAD) + 23 % PES + 12 % PUR wind resistance, DWR (PFOA free, ECO Friendly) 2-layer - inner: 100% PES
Colours:	1. black / black 2. back / blue 3. blue / gold 4. gold
Sizes:	S, M, L, XL, XXL
Style:	men



PFOA FREE

attack lady



Universal sports vest for active movement during trekking, climbing, on a bike, ski alpinism, cross-country skiing. The comfortable barrier material with high level of permeability along with anatomically precise cut ensures sufficient protection, a high level of mobility and good weight. The internal transport layer of the material increases the physiological functionality of the model.



black

blue

gold

attack lady	
Weight:	252 g (M)
Material:	Material: Dynamic Soft Shell 2-layer laminate: 1-layer - outer: 65 % Nylon (PAD) + 23 % PES + 12 % PUR wind resistance, DWR (PFOA free, ECO Friendly) 2-layer - inner: 100% PES
Colours:	1. black 2. blue 3. gold
Sizes:	XS, S, M, L, XL
Style:	lady



PFOA FREE

TESTED IN PATAGONIA
FIRST WINTER SOLO OF
CERRO POLLONE
PERFECT !! DANKE !

MARKUS PUCHER
SEPTEMBER 2016

OUTDOOR
SERIE

climbing
serie

cascade plus



cascade lady



Very comfortable, well-designed year-round trousers for the widest range of outdoor activities. Completely universal trousers, can be used very well for trekking, mountain climbing, climbing, hiking, cycling or everyday wear. They have long been a popular model, in particular because of the great and effective combination of functional materials and very well designed comfortable cut. Thanks to the combed bottom (inside) side of the basic parts ideal for whole year. Anatomically exact cut for unlimited mobility. Used fabrics with high elasticity and resistance. Hybrid combination of materials with fast-dry (vapour transportation) and thermo-insulating adjustment (maintaining body temperature).

- Comfortable waist, belt adjustment.
- Two front and one side pocket (accessible even when wearing harness).
- Fly with two-way zip.
- The basic mixed textile Cordura completed on the inside with combed polyester (warm and moisture absorbent).
- Accessory materials – thin Cordura and elastic combed knitwear.
- Elastic seam technology.
- Safety reflexive accessories and strips.
- Trousers with bottom edge regulation, covered side zipper and elastic wedge for comfortable pulling over trekking boots.
- Bottom rim adjustment, side zip and elastic gusset. Hook for fastening to boots.



- Tested and used by professional Czech mountain guides, member of UIAGM.

((SHORT SIZES))

N.O.S.
NEVER OUT OF STOCK



black darkgrey greyblue red blue

((SHORT SIZES))

N.O.S.
NEVER OUT OF STOCK



CORDURA
FABRIC

PFOA
FREE

HYBRID
SYSTEM

COOLMAX®

cascade plus

Weight: 490 g (L)

Material: **A** - Base, knees and back: 23 % Cordura® (PAD) + 45 % PAD + 23 % PES + 9 % PUR
B - Cordura® WBL system - 46 % Cordura® (PAD) + 32 % Tactel® (PES) + 14 % Lycra® (PUR) + 8 % Coolmax® (PES), DWR (PFOA free, ECO Friendly)
C - functional fabric 86 % PAD + 14 % PUR (235 g/m²)
D - Knee, ankle support: 59 % Nylon (PAD) + 33 % PES + 8 % PUR

Colours: 1. black 3. red
2. darkgrey 4. blue
3. greyblue

Sizes: S, M, L, XL, XXL
black: M-short, L-short, XL-short, XXL-short
blue: M-short, L-short, XL-short, XXL-short

Style: men REGULAR FIT



black black / rose red blue

cascade lady

Weight: 400 g (M)

Material: **A** - Base, knees and back: 23 % Cordura® (PAD) + 45 % PAD + 23 % PES + 9 % PUR
B - Cordura® WBL system - 46 % Cordura® (PAD) + 32 % Tactel® (PES) + 14 % Lycra® (PUR) + 8 % Coolmax® (PES), DWR (PFOA free, ECO Friendly)
C - functional fabric 86 % PAD + 14 % PUR (235 g/m²)
D - Knee, ankle support: 59 % Nylon (PAD) + 33 % PES + 8 % PUR

Colours: 1. black 2. red
2. black / rose 3. blue

Sizes: XS, S, M, L, XL

Style: lady REGULAR FIT

CORDURA
FABRIC

PFOA
FREE

HYBRID
SYSTEM

COOLMAX®



cascade light



A lighter version of our most successful technical pants, Cascade Plus with a new improved design. Ideal for universal use. Thanks to the hybrid combination of lighter functional materials these are intended mainly for summer wear. They are very suitable for climbing, mountaineering and for most outdoor activities. The leg endings have zips and elastic inserts allowing them to be pulled over climbing boots or ski-alpine boots. The anatomically precise cut gives unlimited movement. Treated fibers for quick drying, high flexibility and functionality ensure both user comfort and long user life.

- Comfortable waist with adjustable belt and buckle.
- Two front pockets and one larger hip pocket easily accessible even in a harness.
- A basic fiber mix supplemented with a polyester lining to wick away moisture.
- Supplementary material – light Cordura and an elastic, airy knitted fabric.
- Uses elastic seam technology.
- Leg endings reinforced with wear-resistant fibers.
- Side zips and elasticated inserts allow the leg endings to be widened so that they can be comfortably pulled over boots.
- Reflexive safety elements for nighttime visibility.



cascade light	
Weight:	355 g (L)
Material:	A - Base, Knees and back: High strength functional fabric 78 % Nylon (PAD) + 10 % Coolmax® (PES) + 12 % Lycra® (PUR) B - Cordura® WBL system - lightweight abrasion resistant fabric 46 % Cordura® (PAD) + 32 % Tactel® (PES) + 14 % Lycra® (PUR) + 8 % Coolmax® (PES), DWR (PFOA free, ECO Friendly) C - functional fabric 100% PES, 190 g/m² D - Ankle support - 100% PAD
Colours:	1. black 2. darkgrey 3. red 4. greyblue 5. blue
Sizes:	S, M, L, XL, XXL
Style:	men REGULAR FIT



tornado



Extremely light and very packable reserve jacket with a new improved cut. Pleasant, elastic, highly breathable material. A developed cut in combination with functional materials and reflective elements all go to make this an important universal protective jacket. Thanks to its wonderful wind resistance you can be sure of protection even in the strongest winds and cool conditions with minimal loss of body temperature. A backup jacket that definitely deserves a place in your backpack on any mountain climb, tour or trip or for whatever outdoor activities.

- Close-fitting, anatomically shaped hood. Can be worn under a helmet.
 - Practical chest pocket into which the whole jacket can be packed.
 - Concealed underarm ventilation openings.
 - One-hand adjustable drawstring on the shaped bottom edge.
 - Anatomically shaped sleeves with a simple elastic cuff edge.
- The extended length and flexibility of the material allows them to be pulled over to protect your palms.



packed jacket



anthracite / black

anthracite / blue

blue / gold

tornado	
Weight:	140 g (L)
Material:	Pertex Quantum 100% PAD, 35 g/m ² , DWR (PFOA free, ECO friendly)
Colours:	1. anthracite / black 2. anthracite / blue 3. blue / gold
Sizes:	S, M, L, XL, XXL
Style:	unisex REGULAR FIT



Markus Pucher - Patagonia
(Directalpine test team)



- Reflective details and logos for night identification.



Long-sleeved T-shirt for all-year-round use, made from the patent material Coolmax All Season and elastic Lycra, guaranteeing high comfort wear and maximum functionality. This unique material wick away sweat from the body and also guarantees optimum thermo-regulation.

- Sporty, precise anatomical cut.
- Anatomically shaped sleeves.
- Flat, contrasting elastic inserts.
- Shaped bottom edge.
- Visually designed to match with the Mountain top series.



anthracite / blue



gold / blue



blue / red
limited edition

shark	
Weight:	235 g (L)
Material:	94 % Coolmax All Season® (PES) + 6 % Lycra (PUR), 225g/m²
Colours:	1. anthracite / blue 2. gold / blue 4. blue / red - limited edition
Sizes:	S, M, L, XL, XXL
Style:	unisex REGULAR FIT



Honza Drahota + Ondra Neuman - Geseuse
(marketing) (business)



Jaroslav Kupr - Lago di Garda
(Mountain Guide)



laser



A functional sports T-shirt made from the high quality, brand name material, Polartec Power Dry - an airy, quick drying material, cool to the touch, that provides excellent wicking away of sweat from the body. Superb cut and material ensure comfortable wear even during long mountain ascents and intensive exercise. Partially elasticated waistband with loops for Direct Alpine belts.

- Anatomically shaped, comfortable cut.
- Raglan sleeves.
- Side panels made from one piece for freer arm movement.
- Flat elastic seams.
- Visually designed to match with the Mountain top series.
- UV 50+
- Antibacterial effect.



anthracite / blue
(activity)



anthracite / blue
(ice axes)



blue / anthracite
(activity)



blue / anthracite / gold
(ice axes)

laser

Weight: 153 g (L)

Material: Polartec® Power Dry® - 100% PES Made in USA, 50+ UV protection (UPF), next-to-skin technology

Colours: 1. anthracite / blue (activity) 3. blue / anthracite (activity)
2. anthracite / blue (ice axes) 4. blue / anthr. / gold (ice axe)

Sizes: S, M, L, XL, XXL

Style: men **REGULAR FIT**



PFOA
FREE



samba



A functional sports ladies T-shirt made from the high quality, brand name material, Polartec Power Dry - an airy, quick drying material, cool to the touch, that provides excellent wicking away of sweat from the body. Superb cut and material ensure comfortable wear even during long mountain ascents and intensive exercise.

- Anatomically shaped, comfortable cut.
- Interesting asymmetrical design.
- Flat elastic seams.
- Remarkable „ladies“ pattern to match with the Mountain top series.
- UV 50+
- Antibacterial effect



anthracite / blue



blue / anthracite



rose / blue

samba

Weight: 115 g (M)

Material: Polartec® Power Dry® - 100% PES Made in USA, 50+ UV protection (UPF), next-to-skin technology

Colours: 1. anthracite / blue
2. blue / anthracite
3. rose / blue

Sizes: XS, S, M, L, XL

Style: lady **REGULAR FIT**



PFOA
FREE





Martin Munzar - Innsbruck
(business)



Pavol Hreha- Gesäuse
(development)



Niky - (Directalpine test team)



furry



A functional sports vest made from a light, high-quality 100% merino wool knit. A pleasant natural fiber material. The tried and tested sports cut together with this soft material guarantees comfortable wear both for everyday wear or on long mountain treks and high exertion activities even in changeable wind conditions.

- Anatomically shaped, comfortable cut.
- Raglan sleeves.
- Side panels made from a single piece for better arm movement.
- Flat elastic seams.
- Striking graphic elements marking it out as part of the Mountain Top series.
- 100% natural material.

anthracite
(logo)

blue / anthracite
(ice axes)



blue / gold
(ice axes)

furry	
Weight:	148 g (L)
Material:	100% Merino Wool (Südwole), 150g/m², special anti-twisting yarn
Colours:	1. anthracite (logo) 2. blue / anthracite (ice axes) 3. blue / gold (ice axes)
Sizes:	S, M, L, XL, XXL
Style:	men REGULAR



OUTDOOR SERIE



LAT LON 8812.2 932.3
enter 45.45
00101000100000
6773/3515.45/
45.66 40.89 998
starting test
index-10.1
11.198 set 4.9
LAT LON
index-10.1
value 810
0010
LAT LON
set 4



For many seasons now we have been developing products of the Outdoor Active serie for the broader outdoor public. These are reliable models for everyday outdoor events. But as a result of the quality of the materials and careful workmanship, they can also be used under the most demanding conditions. The casual and very comfortable cuts and naturally also the use of high-quality functional materials guarantees the customer excellent comfort both for the regular outdoors and during everyday wear. We pay great attention to the design of the cut and all the details. The common trait of the models from this series is great value for invested money. The models of the Outdoor Active Serie are distinguished by their imaginative, creative design with technical elements and well-designed details. The colours and details are based on current trends.

For this series our customers always appreciate the typical merits of DIRECTALPINE brand products, mainly pure utility, quality and perfect workmanship.

 talung



New! A practical reserve jacket for most normal outdoor activities based upon our most successful hardshell jacket, Guide. It's made from a light triple-layer material giving excellent protection against water penetration while allowing humidity out. The adjustable hood is precisely cut with a peak. The shoulder and side panels are reinforced for increased protection against mechanical damage. The two main side zip pockets are easily accessible even with the tummy strap of your backpack fastened or when wearing a harness. In addition there is a spacious breast pocket. The anatomically shaped sleeves have easy-to-use zip vents in the back section. Thanks to the elasticated waist the jacket adapts wonderfully to your base-layer of clothing. The bottom edge of the jacket is anatomically shaped for maximum comfort and is fitted with a drawstring which can be tightened with one hand.

- Stiffened hood with adjustment.
- Easily accessible side pockets, one spacious breast pocket.
- Adjustable strap in the rear panel (for a closer fit to the back).
- Ventilation openings in the back of the sleeves, easily reachable even when wearing a backpack.
- Anatomically shaped sleeves; adjustable cuff opening.
- extended back section.



black

black / blue

talung	
Weight:	386 g (L)
Material:	Hardshell 3-layer laminated DERMIZAX 1-layer - outer: high strenght functional fabric 100% PAD, DWR (PFOA free, ECO Friendly) 2-layer - membrane: DERMIZAX - 20.000 mm H ₂ O / 8.000 g/m ² /24 hr., 100% PUR 3-layer - inner: 100% PAD Reinforced shoulders, chest pocket and back: GELANOTS 20.000 mm H ₂ O/20.000 g/m ² /24 hr., DWR (PFOA free, ECO friendly) 100% sealed seams
Colours:	1. black 2. black / blue
Sizes:	S, M, L, XL, XXL
Style:	men REGULAR FIT





New! Outdoor summer jacket made from thin barrier softshell. A comfortable stretch material, sufficiently resistant against wind and with good mechanical resistance and high breathability. The comfortable cut of this jacket makes it ideal for the widest range of outdoor and recreational activities. Use it out hiking, cycling or even for normal everyday street wear.

- Adjustable collar.
- Two side zip pockets, one breast pocket.
- Anatomically shaped bottom edge.



black / anthracite



red / anthracite



petrol / black

cliff	
Weight:	335 g (L)
Material:	Rip-stop elastic fabric 94 % PAD + 6 % Spandex® (PUR), with Wicking Finish.
Colours:	1. black / anthracite 2. red / anthracite 3. petrol / black
Sizes:	S, M, L, XL, XXL
Style:	men REGULAR FIT



badile



badile lady



Innovated version of these popular pants for all-year-round use. Ideal pants for mountain hiking, mountain climbing, hiking, ski alpinism and all outdoor activities. Fitting anatomical cut. Highly elastic and resistant fabrics. Hybrid combination of materials with fast-dry (vapour transportation) and thermo-insulating adjustment (increasing body temperature). Design allows omitting and repositioning of some seams to eliminate their possible damage. These have long been DIRECTALPINE's bestselling technically designed pants. Very popular and a proven favorite, our customers fittingly refer to them as a "second skin".

- Partially elastic waist adjustable with a belt and buckle.
- Two front pockets and one side pocket, easily accessible even when wearing a harness.
- Elastic seam technology.
- Main fabric together with Coolmax® yarn (vapour transportation).
- Shaped knees and back sitting section made of abrasion-resistant fabric Cordura.

- Simple leg ends with elastic side inserts for stretching over boots (maybe even over ski boots).



- Used by mountain rescues service:



(SHORT SIZES)



black / black
darkgrey / black
red / black



black / black
darkgrey / black
red / black

badile	
Weight:	485 g (L)
Material:	Base: high strenght functional fabric 78 % Nylon (PAD) + 10 % Coolmax® (PES) + 12 % Lycra® (PUR) Knees, back parts: abrasion resistant fabric 23 % Cordura® (PAD) + 45 % PAD + 23 % PES + 9 % PUR
Colours:	1. black / black 2. darkgrey / black 3. red / black
Sizes:	S, M, L, XL, XXL darkgrey / black: M-short, L-short, XL-short, XXL-short
Style:	men REGULAR FIT



badile lady	
Weight:	390 g (M)
Material:	Base: high strenght functional fabric 78 % Nylon (PAD) + 10 % Coolmax® (PES) + 12 % Lycra® (PUR) Knees, back: abrasion resistant fabric 45 % PAD + 23 % Cordura® (PAD) + 23 % PES + 9 % PUR
Colours:	1. black / black 2. darkgrey / black 3. red / black
Sizes:	XS, S, M, L, XL
Style:	lady REGULAR FIT





gavia



Universal sports jacket for increasing thermal comfort, suitable as a second layer. Soft, very stretchy material. The close-fitting anatomically precise cut does not restrict movement. Attractive design with asymmetric colour scheme. An ideal and universal jacket for year-round use, suitable both for regular wear and for all outdoor activities and the most demanding events in the mountains.

- Higher, close-fitting collar.
- Two front zip pockets, chest zip pocket.
- Anatomical sleeves.
- Shaped lower edge, longer at the back.
- Flat, elastic seams.



gavia		
Weight:	375 g (L)	
Material:	Tecnostretch™ (Pontetorto) highly stretch fabric with quick drying, Wicking Finish™ 88 % PES + 12 % elasthan (PUR)	
Colours:	1. black 2. red 3. blue 4. petrol 5. petrol / gold	
Sizes:	S, M, L, XL, XXL	
Style:	men	REGULAR FIT



tonale



Pullover for higher thermal comfort. Suitable as a second layer. Soft, high-stretch material. Close-fitting, anatomically accurate cut which does not restrict movement. Attractive design with asymmetric colour scheme.

- Shaped close-fitting collar.
- Sufficiently large chest zip pocket.
- Anatomic cut of sides for free arm movement.
- Shaped lower edge, longer at the back.
- Flat, elastic seams.

• Tonale pullover used by:
Mountain Rescue
Czech Republic



tonale		
Weight:	350 g (L)	
Material:	Tecnostretch™ (Pontetorto) highly stretch fabric with quick drying, Wicking Finish™ 88 % PES + 12 % elasthan (PUR)	
Colours:	1. black 2. red 3. blue 4. petrol 5. gold	
Sizes:	S, M, L, XL, XXL	
Style:	men	REGULAR FIT



eira



Light ladies' sweatshirt made of soft, functional, highly stretchy material. Close-fitting, precise cut. Great model for all customers who need a simple universal jacket or sweatshirt for year-round use, for regular wear, all outdoor activities and the most demanding use in the mountains. Attractive design with asymmetric colour scheme.

- In-collar hood.
- Anatomically shaped side parts.
- Two side pockets.
- Longer back part.
- Flat, elastic seams.



black / black red / black petrol / blue rose / petrol rose / gold

eira	
Weight:	380 g (M)
Material:	Tecnostretch™ (Pontetorto) highly stretch fabric with quick drying, Wicking Finish™ 88 % PES + 12 % elastan (PUR)
Colours:	1. black / black 2. red / black 3. petrol / blue 4. rose / petrol 5. rose / gold
Sizes:	XS, S, M, L, XL
Style:	lady SPORT FIT



Sabina + Miša - Directalpine test team





defender



Practical and robust travel pants for reliable long-term wear, now in a new design! A functional combination of robust ripstop cotton fibers treated with Hydrophobic Extreme, a long-proven durable material used in our best selling Patrol pants. In this model we've managed to combine classic natural fibers and the latest technology with a lighter, more elastic, resistant material to give great overall functionality. Impregnation with Hydrophobic Extreme significantly improves the properties of the cotton fibers, extends their user life, increases protection against water, improves breathability and also makes them more resistant to soiling. Pants from this innovative classic material not only admirably protect against inclement weather but also stay very breathable. The developed anatomical cut, together with the use of new elastic parts guarantees a perfect fit. The long user life and usefulness of DEFENDER makes them ideal pants for a wide group of customers who are active outdoors in harsher conditions. Thanks to their many pockets they are also suitable for the most arduous expeditions. Due to the primary source material (cotton and synthetics from renewable sources) this product is ecological from the point of view of production and doesn't put a strain on the environment. Repellent is applied using plasma treatment on the dry textile during which no waste substances occur and the release of repellent during washing is minimal. The material is easy to recycle and very environmentally friendly.

- A stiffened waistband with loops for a DirectAlpine belt.
- Two gusseted front pockets. Large, practical, zipable, bellows pockets on the thigh, big enough for a map. Easily accessible, right, zip thigh pocket. Rear zip pocket.
- Fasteners for attaching D.A. suspenders.
- Strong triple stitching.
- Reinforced duplicate front parts (thigh + knee).
- Double-reinforced seat.
- Anatomically shaped knees.
- Pocket tops and bottom edge of the pants reinforced with wear-resistant material.
- Adjustable leg endings.
- Seams: Special water expandable thread core for increased water resistance of seams (core plaited from 100% cotton).



It is hydrophobic and oleophobic finishing of textiles, be it cloth, webbing or nonwoven textiles. A thin nano layer of fluorocarbon is created on the surface making it extremely water-repellent and oleophobic.

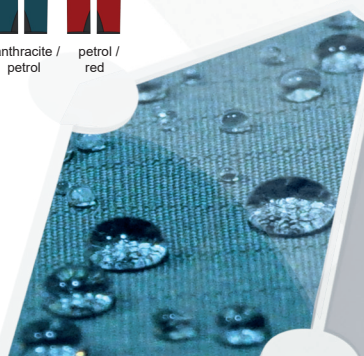
Hydrofobic Extreme finishing developed by NANOMEMBRANE involves every single fiber being coated with a thin layer of nanoparticles. The result is an extremely high level of hydrophobic and oleophobic finishing that prevents water, wine, coffee or grease from making stains on the surface of the textiles or even damaging them. This results in a self-cleaning effect similar to that of lotus leaves.

In contrast with commonplace hydrophobic and oleophobic finishing processes, interfiber pores are not blocked, which prevents deterioration of conducting moisture from skin through the textile. Furthermore, it is possible to launder the coated surfaces using commonplace detergents and it has been scientifically proved that Hydrofobic Extreme is at least four times more durable than other materials. This in return saves the customer time and money.

defender	
Weight:	599 g (L)
Material:	Base: 100% cotton, high density fabric, rip-stop, Hydrophobic extreme DWR (PFOA free, ECO friendly) Saddle, pockets, trousers: abrasion resistant fabric 60 % Nylon (PAD) + 40 % stretch PES, Hydrophobic Extreme DWR (PFOA free, ECO friendly), DuPont™ Sorona® contains 37 % renewably sourced ingredients by weight Reinforcement: 59 % Nylon (PAD) + 33 % PES + 8 % PUR
Colours:	1. anthracite / black 2. anthracite / petrol 3. petrol / red
Sizes:	S, M, L, XL, XXL
Style:	men REGULAR FIT



anthracite / black anthracite / petrol petrol / red





mountainer



Along with the trousers PATROL and PATROL LADY FIT, over the long term these are the best selling DIRECTALPINE trousers and have the best customer rating. Strong, highly resilient and comfortable trousers with technical additions. The stretch material used ensures comfortable wear. The ideal universal trousers for the widest range of outdoor activities and regular wear. A great ratio of comfort, very long life and user value to price. Maximum value for a good price, trousers for many years.

- Partially elastic waist with adjustable belt.
- Fly with two two-way zips.
- Two zip pockets, one additional zip pocket on thigh, simple side pocket.
- Reinforced knees, seat and lower inner edge of legs (Cordura).
- Anatomically shaped knees.
- Lower edge of legs with internal wedge, width regulation.
- Loops for clipping braces on.



((SHORT SIZES))

N.O.S.
NEVER OUT OF STOCK



black / black grey / black brown / black red / black greyblue / black petrol / black

mountainer	
Weight:	640 g (L)
Material:	Base: abrasion resistant fabric 60 % PAD + 40 % stretch PES, DWR (PFOA free, ECO friendly), DuPont™ Sorona® contains 37 % renewably sourced ingredients by weight Reinforcements (knees, back, bottom rims): Cordura® 100% PAD, DWR (PFOA free, ECO friendly)
Colours:	1. black / black 2. grey / black 3. brown / black 4. red / black 5. greyblue / black 6. petrol / black
Sizes:	S, M, L, XL, XXL black / black: M-short, L-short, XL-short, XXL-short greyblue / black: M-short, L-short, XL-short, XXL-short
Style:	men REGULAR FIT



mountainer cargo



Due to the huge number of requests from our satisfied customers we are extending our best-selling range of Mountainer pants with this new model. They are made from a popular resistant material reinforced with Cordura and have added large cargo pockets on the thigh. In short, another strong, comfortable, wear-resistant pants in the DIRECTALPINE collection. The use of stretch material ensures comfortable wearability. Ideal universal pants for outdoor activities as well as for everyday wear. A high level of comfort, extremely long user life and good value for money. These pants give you the maximum for a great price and many years of use.

- Partly elasticated waist with belt loops.
- Two classic reach through pockets.
- Two large cargo pockets on the thighs.
- Stiffened, knees and seat (Cordura).
- Anatomically shaped knees.



- Simple ending of legs for easier adjustment, shortening.



black / black brown / black red / black greyblue / black petrol / black

mountainer cargo	
Weight:	500 g (L)
Material:	Base: abrasion resistant fabric 60 % PAD + 40 % stretch PES, DWR (PFOA free, ECO friendly), DuPont™ Sorona® contains 37 % renewably sourced ingredients by weight Reinforcements (knees, back): Cordura® 100% PAD, DWR (PFOA free, ECO friendly)
Colours:	1. black / black 2. brown / black 3. red / black 3. greyblue / black 4. petrol / black
Sizes:	S, M, L, XL, XXL
Style:	men REGULAR FIT





mountainer tech



After the successful reception of the model Mountainer Cargo we are expanding our range of best-selling pants Mountainer with a new model. It is based on a very demanded classic concept of reinforced knees and back part. Newly used highly functional and stretch materials guarantee high comfort and weight savings in particular. It determines them as the perfect pants for a wide range of outdoor activities such as hiking, including mountaineering, but also for casual wear. Great ratio of comfort, extremely long life and value to the price. The maximum value for a good price, pants on years of use.

- Waist partially elastic with an adjustable waistband.
- Fly with two two-way zips.
- Two zippered pockets and one additional zippered pocket on the thigh.
- Reinforcement knees, back part and lower inner edge of the leg.
- Anatomically shaped knees.
- Lower edge of legs with internal wedge, width regulation.
- loops for attaching braces.



((SHORT
SIZES))

N.O.S.
NEVER OUT
OF STOCK



anthracite / black black / petrol petrol / black petrol / greyblue

mountainer tech	
Weight:	470 g (L)
Material:	Base: Rip-stop elastic fabric - 94 % PAD + 6 % Spandex (PUR), with Wicking Finish Reinforcements (knees, back, bottom rims): abrasion resistant fabric 60 % PAD + 40 % stretch PES, DWR (PFOA free, ECO friendly), DuPont™ Sorona® contains 37 % renewably sourced ingredients by weight
Colours:	1. anthracite / black 3. petrol / black 2. black / petrol 4. petrol / greyblue
Sizes:	S, M, L, XL, XXL anthracite / black: M-short, L-short, XL-short, XXL-short
Style:	men REGULAR FIT



Karel - Tre Cime di Lavaredo
(Directalpine test team)



patrol



Practical, tough and durable trousers for the widest range of uses. Along with the trousers MOUNTAINER, over the long term these are the best selling DIRECTALPINE trousers and have the best customer rating. Strong, highly resilient and comfortable trousers with technical additions. The stretch material used ensures comfortable wear. The ideal universal trousers for the widest range of outdoor activities and regular wear. A great ratio of comfort, very long life and user value to price. Maximum value for a good price, trousers for many years.

- Partially elastic waist with adjustable belt.
- Two zipped pockets, one thigh and one back pocket.
- Active cut knees.
- Long-term best-selling pants from the collection Direct Alpine.
- Simple ending of legs for easier adjustment, shortening.



((SHORT SIZES))

N.O.S.
NEVER OUT OF STOCK

((SHORT SIZES))



black / black grey / black brown / black red / black greyblue / black petrol / greyblue

patrol	
Weight:	481 g (L)
Material:	Abrasion resistant fabric 60 % PAD + 40 % stretch PES, DWR (PFOA free, ECO friendly), DuPont™ Sorona® contains 37 % renewably sourced ingredients by weight
Colours:	1. black / black 4. red / black 2. grey / black 5. greyblue / black 3. brown / black 6. petrol / greyblue
Sizes:	S, M, L, XL, XXL black / black: M-short, L-short, XL-short, XXL-short greyblue / black: M-short, L-short, XL-short, XXL-short
Style:	men REGULAR FIT

PFOA
FREE

Ondra Neuman - Berchtesgaden
(business)



patrol tech



New! We've extended our long-standing favorite Patrol pants with this new technical multifunctional variation. A markedly shaped cut with specially placed parts made from a light stretch material in the direction of movement offers wonderful comfort. A stronger material on the knees and seat provides greater resistance to fraying. The inner bottom edge of these pants is reinforced with a panel of wear-resistant fabric.

- Partly elasticated waist with strap adjuster.
- Anatomically shaped knee parts.
- Practical soft thigh pocket.
- Zippable side vents.

- Fitted gusset for greater freedom of movement.
- Reinforced lining in the lower leg.



((SHORT
SIZES))

N.O.S.
NEVER OUT
OF STOCK



black / black anthracite / black black / brown petrol / red petrol / black

patrol tech

Weight:	395 g (L)
Material:	Base: Rip-stop elastic fabric 94 % PAD + 6 % Spandex® (PUR), with Wicking Finish Knees, back: Abrasion resistant fabric 60 % PAD + 40 % stretch PES, DWR (PFOA free, ECO friendly), DuPont™ Sorona® contains 37 % renewably sourced ingredients by weight Reinforcement: 59 % Nylon (PAD) + 33 % PES + 8 % PUR
Colours:	1. black / black 4. petrol / red 2. anthracite / black 5. petrol / black 3. black / brown
Sizes:	S, M, L, XL, XXL anthracite / black: M-short, L-short, XL-short, XXL-short
Style:	men REGULAR FIT



Ventilation

Ventilation



patrol lady ♀



Practical, tough and durable trousers for the widest range of uses. Strong, highly resilient and comfortable trousers with technical additions. The stretch material used ensures comfortable wear. The ideal universal trousers for the widest range of outdoor activities and regular wear. Great ratio of comfort, very long life and user value to price. Maximum value for a good price, trousers for many years.

- Partially elastic waist with adjustable belt.
- Two zipped pockets, one thigh and one back pocket.
- Active cut knees.
- Long-term best-selling pants from the collection Direct Alpine.
- Simple ending of legs for easier adjustment, shortening.



black / black grey / grey red / grey

patrol lady	
Weight:	430 g (M)
Material:	Abrasion resistant fabric 60 % PAD + 40 % stretch PES, DWR (PFOA free, ECO friendly), DuPont™ Sorona® contains 37 % renewably sourced ingredients by weight
Colours:	1. black / black 2. grey / grey 3. red / grey
Sizes:	XS, S, M, L, XL
Style:	lady REGULAR FIT



patrol lady fit ♀



Practical, strong and durable pants for wide use. Based on the popular model Patrol Lady. Comfortable cut, modern design with technical accessories. Its stretch fabric ensures a high level of comfort. Perfect multipurpose trousers for the widest range of outdoor activities and casual wear. Excellent rate of comfort, durability and value for money.

- Waistband with belt loops for Direct Alpine belts.
- Two comfortable pockets, additional zipper pocket, classic rear pockets.
- Anatomically shaped knee.
- Simple ending of legs for easier adjustment, shortening.



black / black red / grey petrol / grey

patrol lady fit	
Weight:	350 g (M)
Material:	Abrasion resistant fabric 60 % PAD + 40 % stretch PES, DWR (PFOA free, ECO friendly), DuPont™ Sorona® contains 37 % renewably sourced ingredients by weight
Colours:	1. black / black 2. red / grey 3. petrol / grey
Sizes:	XS, S, M, L, XL
Style:	lady REGULAR FIT





beam

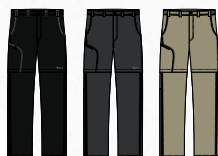


Practical and comfortable light traveller's trousers with legs that can be unfastened to make shorts, now improved with the possibility of unfastening the lower part along the side. An important detail for unfastening or fastening the bottom parts without the need to take off shoes. The customer buys 2 kinds of trousers in 1 product. A simple, well-fitting cut with technical lines. Very pleasant stretch material with Quick Drying finish. It is based on our popular model Borneo, in this way we have expanded this range of best-sellers to include another model for the general outdoor public. A great solution for travelling, hiking, Nordic walking, also ideal as comfortable casual trousers for all-day regular wear.

- Partially elasticated waist with loops for Directalpine belts.
- Two front pockets.
- Two thigh zip pockets (front and rear).
- Possibility of removing lower parts of legs.
- Practical unzipping of sides of lower parts without taking off shoes.
- Different colored zippers on the legs for easy distinguish between left and right.
- Loose simple end of bottom edge of legs.
- Antimosquito – the mechanical properties and structure of the fabric help protect against stinging insects.



side zip



black anthracite tobacco

beam	
Weight:	375 g (L)
Material:	Lightweight fabric 94 % PAD + 6 % Spandex (PUR), DWR (PFOA free, ECO friendly), with quick drying finish - Moisture Management, UV 30+
Colours:	1. black 2. anthracite 3. tobacco
Sizes:	S, M, L, XL, XXL
Style:	men REGULAR FIT



beam lady



Light ladies' travel pants with practical detachable leg parts to convert them into shorts. Side zips enable the lower leg to be unzipped along the side and to allow the lower leg part to be attached or detached without having to take off your shoes. Customers get 2 pants in 1. Simple, with a well fitting cut, technically designed and attractive. Tried and tested through years of use, a very pleasant stretch material with Quick Drying treatment. A great choice for traveling, hiking, Nordic walking or ideal as leisure pants for regular all-day use.

- Partially elasticated waist with loops for Directalpine belts.
- Two front pockets.
- Two thigh zip pockets (front and rear).
- Possibility of removing lower parts of legs.
- Practical unzipping of sides of lower parts without taking off shoes.
- Different colored zippers on the legs for easy distinguish between left and right.
- Loose simple end of bottom edge of legs.
- Antimosquito – the mechanical properties and structure of the fabric help protect against stinging insects.



black / rose anthracite red tobacco

beam lady	
Weight:	330 g (M)
Material:	Lightweight fabric 94 % PAD + 6 % Spandex (PUR), DWR (PFOA free, ECO friendly), with quick drying finish - Moisture Management, UV 30+
Colours:	1. black / rose 2. anthracite 3. red 4. tobacco
Sizes:	XS, S, M, L, XL
Style:	lady REGULAR FIT



borneo



Universal outdoor trousers with fashionable details made of functional elastic material. Ideal for hot summer days, for all outdoor activities. The legs can be removed below the knee, possibility of shortening to $\frac{3}{4}$ length. The customer buys 2 kinds of trousers in 1 product. Very pleasant stretch material with Quick Drying finish. Light and also wear resistant material ensures long life of the trousers. Along with the ladies' version SIERRA these are the best-selling DIRECTALPINE summer trousers over the long term.

- Partially elasticated waist with belt.
- Two front pockets + one additional pocket, two thigh zip pockets and two rear pockets.
- Possibility of removing lower parts of legs at $\frac{3}{4}$ length.
- Differing positioning of stretch parts for greater comfort.
- Antimosquito – the mechanical properties and structure of the fabric help protect against stinging insects.



black anthracite tobacco

borneo	
Weight:	410 g (L)
Material:	Lightweight fabric 94 % PAD + 6 % Spandex (PUR), DWR (PFOA free, ECO friendly), with quick drying finish - Moisture Management, UV 30+
Colours:	1. black 2. anthracite 3. tobacco
Sizes:	S, M, L, XL, XXL
Style:	men REGULAR FIT



sierra



Practical ladies' trousers. An innovative, highly comfortable and universal cut with added small fashion details. Ideal for hot summer days, for all outdoor activities. The legs can be removed below the knee, possibility of shortening to $\frac{3}{4}$ length. The customer buys 2 kinds of trousers in 1 product. Very pleasant stretch material with Quick Drying finish. Along with the men's version BORNEO these are the best-selling DIRECTALPINE summer trousers.

- Partially elasticated waist with loops for Directalpine belts.
- Two front pockets, one thigh zip pocket and two rear pockets.
- Possibility of removing lower parts of legs at $\frac{3}{4}$ length.
- Differing positioning of stretch parts for greater comfort.
- Antimosquito – the mechanical properties and structure of the fabric help protect against stinging insects.



black black / rose anthracite red tobacco

sierra	
Weight:	375 g (M)
Material:	Lightweight fabric 94 % PAD + 6 % Spandex (PUR), DWR (PFOA free, ECO friendly), with quick drying finish - Moisture Management, UV 30+
Colours:	1. black 2. black / rose 3. anthracite 4. red 5. tobacco
Sizes:	XS, S, M, L, XL anthracite: M-short, L-short, XL-short red: M-short, L-short, XL-short
Style:	lady REGULAR FIT





nelson



Practical, comfortable, light „traveller's" shorts. Simple, classic cut with enough pockets. Very pleasant stretch material with Quick Drying finish.

- Partially elasticated waist with loops for Direct Alpine belts.
- Antimosquito – the mechanical properties and structure of the fabric help protect against stinging insects.
- Two comfortable front pockets. Two thigh pockets and one rear one.



black

anthracite

tobacco

nelson

Weight:	215 g (L)		
Material:	Lightweight fabric 94 % PAD + 6 % Spandex (PUR), DWR (PFOA free, ECO friendly), with quick drying finish - Moisture Management, UV 30+		
Colours:	1. black 2. anthracite 3. tobacco		
Sizes:	S, M, L, XL, XXL		
Style:	men	REGULAR FIT	



no chemistry
mechanical antimosquito



trip



These highly innovative shorts have zip openings in the sides. This is great, for example, on steep climbs, long mountain walks or hot summer days, when they provide maximum ventilation and increased comfort for the wearer. Thanks to the comfortable leisure styling and the use of light functional elastic fibers they give free unrestricted movement. Ideal for all outdoor activities and for casual everyday wear in summer. These are also a great choice for bouldering, sports climbing or practice climbing outdoors or in a hall.

- Flexible waistband with adjustable belt.
- Thin zip in the fly.
- Free ending of edge of legs above the knee.
- Zip opening of sides.
- Quick-drying stretch material.



- Practical rear zip pocket.



anthracite

blue

trip

Weight:	170 g (L)		
Material:	Lightweight fabric 94 % PAD Full Dull + 6 % PUR, Wicking finish, UV 30+		
Colours:	1. anthracite 2. blue		
Sizes:	S, M, L, XL, XXL		
Style:	men	REGULAR FIT	



side zip



Markus Pucher - Directalpine test team



Martin Munzar - Innsbruck (business)



madeira



An attractive technical functional shirt with short sleeves. Ideal for travellers and regular everyday wear. Very popular model, universal design. Comfortable shirt for regular wear and light sports use ensuring the customer's comfort even on hot summer days.

- Shoulders with comfortable functional polyester knitted fabric with moisture transport effect.
- Comfortable, close-fitting design.
- Quick-drying stretch material.
- Zip closing, practical zip pocket on breast.



anthracite / blue



blue / gold

madeira	
Weight:	197 g (L)
Material:	Lightweight fabric 94 % PAD Full Dull + 6 % PUR, Wicking finish, UV 30+
Colours:	1. anthracite / blue 2. blue / gold
Sizes:	S, M, L, XL, XXL
Style:	men REGULAR FIT

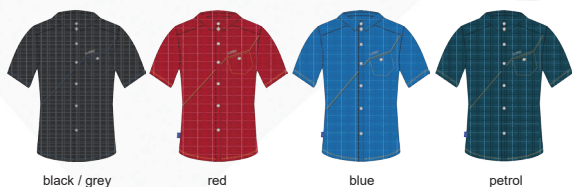


 ray



Gentleman's summer shirt with sport cut and short sleeves. Comfortable shirt for regular wear and light sports use ensuring the customer's comfort even on hot summer days.

- The light, airy, highly stretchy material with admixture of Spandex guarantees great comfort during wear.
- Quick-drying material.
- Shaped, comfortable cut, asymmetrical division of front part by contrasting backstitch.
- Breast pocket.
- Loose lower edge with vent.
- UV 30+.



black / grey

red

blue

petrol

ray	
Weight:	135 g (L)
Material:	Lightweight (76 g/m ²) 4 way stretch ripstop fabric 86 % Nylon (PAD) + 14 % Spandex® (PUR), UV 30+
Colours:	1. black / grey 3. blue 2. red 4. petrol
Sizes:	S, M, L, XL, XXL
Style:	men REGULAR FIT

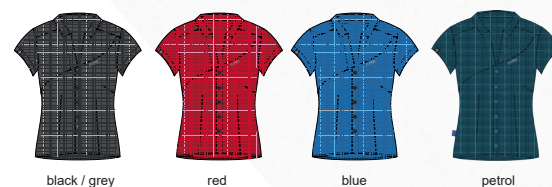


 sandy



Attractive ladies shirt made from a very comfortable, air-permeable, stretch material. It has a comfortable specially designed cut which, thanks to the elasticity of the material, is suitable for a wide spectrum of customers. This model is ideal for normal everyday use and for outdoor activities, not only in the heat of summer but all year round.

- Light, airy, hi-stretch material with a Spandex mix of fibers guaranteeing high comfort for the wearer. Quick-drying material.
- Anatomical shaped cut with the front panel divided assymetrically by contrasting stitching.
- Comfortable, loose open cut.
- Loose bottom edge.
- UV 30+.



black / grey

red

blue

petrol

sandy	
Weight:	81 g (M)
Material:	Lightweight (76 g/m ²) 4 way stretch ripstop fabric 86 % PAD (Nylon) + 14 % Spandex® (PUR), UV 30+
Colours:	1. black / grey 3. blue 2. red 4. petrol
Sizes:	XS, S, M, L, XL
Style:	lady REGULAR FIT



pelmo



Universal outdoor trousers for all activities in the mountains, in the nature and for everyday wear. Comfort is ensured by the light, functional stretch material, attractive, fresh design and perfect cut of the trousers.

- Partially elasticated waistband with belt loops for Directalpine belts.
- Two front slit pockets, one practical zip-up thigh pocket.
- Two rear zip pockets.
- Anatomically shaped cut.

- Simple ending of legs for easier adjustment, shortening.



black anthracite petrol

pelmo	
Weight:	268 g (L)
Material:	Rip-stop elastic fabric 94 % PAD + 6 % Spandex® (PUR), with Wicking Finish.
Colours:	1. black 2. anthracite 3. petrol
Sizes:	S, M, L, XL, XXL
Style:	men REGULAR FIT



pelmo 3/4



Light summer ¾ outdoor trousers for all activities in the mountains, in the nature and for everyday wear. Comfort is ensured by the light, functional stretch material, attractive, fresh design and perfect cut of the trousers.

- Partially elasticated waistband with belt loops for Directalpine belts.
- Two front slit pockets, one rear zip pocket.
- Anatomically shaped cut.
- Vents in the lower edge of the trousers for greater comfort during leg movement.



anthracite petrol

pelmo 3/4	
Weight:	250 g (L)
Material:	Rip-stop elastic fabric 94 % PAD + 6 % Spandex® (PUR), with Wicking Finish.
Colours:	1. anthracite 2. petrol
Sizes:	S, M, L, XL, XXL
Style:	men REGULAR FIT





cortina



Women's universal light trousers with an interesting tailored cut. Lighter functional stretch material. Comfortable practical trousers for a wide range of uses.

- Partially elasticated waistband with belt loops for Directalpine belts.
- Two front pockets, one practical zip-pocket on the thigh.
- Two back zip-pockets.
- Anatomical tailored cut with inserted side panels.



- Simple ending of legs for easier adjustment, shortening.



black / red anthracite / grey red petrol rose

cortina	
Weight:	290 g (M)
Material:	Rip-stop elastic fabric 94 % PAD + 6 % Spandex® (PUR), with Wicking Finish.
Colours:	1. black / red 4. petrol 2. anthracite / grey 5. rose 3. red
Sizes:	XS, S, M, L, XL
Style:	lady REGULAR FIT

SWING
COOL



cortina 3/4



Ladies summer ¾ trousers. Very well designed, comfortably shaped cut. The functional stretch material ensures maximum comfort during all outdoor activities. Comfortable and practical three-quarter length trousers for universal use.

- Partially elasticated waistband with belt loops for Directalpine belts.
- Two front pockets, one practical zip-pocket on the thigh.
- One back zip-pocket.
- Anatomical tailored cut with inserted side panels.



- Practical elastic adjustment of trouser legs.



anthracite / grey red petrol rose

cortina 3/4	
Weight:	230 g (M)
Material:	Rip-stop elastic fabric 94 % PAD + 6 % Spandex® (PUR), with Wicking Finish.
Colours:	1. anthracite / grey 3. petrol 2. red 4. rose
Sizes:	XS, S, M, L, XL
Style:	lady REGULAR FIT

SWING
COOL



cortina short



Women's universal light shorts with an interesting tailored cut. Lighter functional stretch material. Comfortable practical shorts for a wide range of uses.

- Partially elasticated waistband with belt loops for Directalpine belts.
- Two front pockets, one back zip-pocket.
- Anatomical tailored cut with inserted side panels and front division.
- Simple finish of trouser leg bottoms.



anthracite / grey red petrol rose

cortina short	
Weight:	150 g (M)
Material:	Rip-stop elastic fabric 94 % PAD + 6 % Spandex® (PUR), with Wicking Finish.
Colours:	1. anthracite / grey 3. petrol 2. red 4. rose
Sizes:	XS, S, M, L, XL
Style:	lady REGULAR FIT



jasmin



Light, comfortable, leisure skirt for everyday regular wear and light outdoor activities. Comfortable stretch material for maximum comfort of customer.

- Partially elasticated waistband with belt loops for Directalpine belts.
- Simple side pockets.
- Functionally shaped lower edge with practical zip vent for improved leg movement.
- Regulation of length of front part.
- Adjustable bottom edge by elastic cord (one hand).



black / red anthracite red petrol rose

jasmin	
Weight:	167 g (M)
Material:	Rip-stop elastic fabric 94 % PAD + 6 % Spandex® (PUR), with Wicking Finish.
Colours:	1. black / red 4. petrol 2. anthracite 5. rose 3. red
Sizes:	XS, S, M, L, XL
Style:	lady REGULAR FIT





OUTDOOR
SERIE

climbing
serie



 crack



Classic, close-fitting style T-shirt in attractive colours. Popular patterns with attractive outdoor themes emphasising the image of each customer. Quality cotton knit material. An ideal T-shirt for everyday wear.



black - my friend



black - mountain spirit



black - on the top



petrol - mountain spirit



petrol - running free



red - my friend

crack

Weight:	180 g (L)	
Material:	100% cotton, 180 g/m ² (high quality, circular spun, sanforized weave), print 17 x 24 cm	
Colours:	1. black - my friend 4. petrol - mountain spirit 2. black - mountain spirit 5. petrol - running free 3. black - on the top 6. red - my friend	
Sizes:	S, M, L, XL, XXL	
Style:	men	REGULAR FIT

 bosco



An extremely comfortable T-shirt in a classic loose cut in attractive colors with printed outdoors motifs, emphasizing the image of every customer. A high-quality, airy cotton knit with a streaked effect. Ideal for sports or for everyday wear, particularly in the warm summer months.



anthracite - on the top



petrol - mountain spirit



red - running free



gold - my friend

bosco	
Weight:	150 g (L)
Material:	100% cotton, 150 g/m ² , print 17 x 24 cm
Colours:	1. anthracite - on the top 3. red - running free 2. petrol - mountain spirit 4. gold - my friend
Sizes:	S, M, L, XL, XXL
Style:	men REGULAR FIT



organic



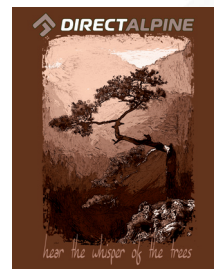
Classic, close-fitting style T-shirt in attractive colours, printed with outdoor motives. Quality ecocotton knit material. „Natural“ colour is produced without dying, pure natural colour.



brown



mustard



cinnamon



natural



organic lady



organic lady

Weight:	120 g (M)
Material:	94 % organic cotton + 6 % elasthan (PUR), 180 g/m², print 17 x 24 cm, „natural“ colour is produced without dying, pure natural colour.
Colours:	1. brown 2. mustard 3. cinnamon 4. natural
Sizes:	XS, S, M, L, XL
Style:	lady SPORT FIT

organic	
Weight:	160 g (L)
Material:	94 % organic cotton + 6 % elasthan (PUR), 180 g/m², print 17 x 24 cm, „natural“ colour is produced without dying, pure natural colour.
Colours:	1. brown 2. mustard 3. cinnamon 4. natural
Sizes:	S, M, L, XL, XXL
Style:	men SPORT FIT



climbing

SERIE

The products of the Climbing Serie are intended for rock climbers, climbers on artificial walls, boulderers, slackliners and all outdoor enthusiasts. We develop these models for rock climbing, training and movement in the climbing environment in general. This casual yet highly functional clothing will appeal mainly to active users. The design, with an emphasis on the climbing image, attractive details combined with modern colours and patterns, offers an interesting, modern range of products.

Emotion, image, comfort and quality – these traits are typical for this series, which is intended for the dynamic climbing community.





tacul



Universal outdoor jacket with very well designed cut. Comfortable stretch material, sufficiently wind resistant and with good mechanical resilience. Close-fitting cut, low weight. Highly permeable. Ideal protection for climbing and long trips. A great climbing jacket for the long rock faces of the Alps, Yosemite or anywhere, but can also be put to good use for any outdoor activity, from cycling and hiking to cross-country skiing or winter running.

- Pleasant shaped collar with simple, functional and practical hood which does not in any way restrict vision or movement.

- Anatomically shaped sleeves terminated with elastic hem.
- Two side zip pockets, one additional breast pocket. Simple internal pocket.
- Extended back part.
- Adjustable bottom edge (using one hand).

- Possibility of easy packing into hood and attachment to harness or backpack.



anthracite / black



red / black



petrol / black

tacul

Weight:	380 g (L)
Material:	Rip-stop elastic fabric 94 % PAD + 6 % Spandex (PUR), with Wicking Finish
Colours:	1. anthracite / black 2. red / black 3. petrol / black
Sizes:	S, M, L, XL, XXL
Style:	men REGULAR FIT

SWING
COOL



gaia



Universal ladies outdoor jacket with a sophisticated anatomical cut and practical hood. Made from a comfortable stretch material with excellent mechanical resistance to ensure comfort and great protection from wind. A close-fitting cut, low weight and high breathability. A superb climbing jacket for longer alpine or Tatra walls and, at the same time, very usable for anykind of outdoor activity from cycling to hiking to winter cross-country skiing or running. Having been tested in a range of outdoor activities over a long period of time this jacket has received positive evaluations from all members of our test team.

- Inner shaped elastic collar.
- Practical hood which doesn't limit view or movement.
- Anatomically shaped sleeves with elasticated cuffs.
- Side panels made from a highly elastic breathable material.
- Two side zip pockets, one breast pocket.
- Extended rear part.
- One-handed adjustment of bottom edge.
- Possibility of easy packing into hood and attachment to harness or backpack.



anthracite



red



petrol



rose

gaia

Weight:	295 g (M)
Material:	Rip-stop elastic fabric 94 % PAD + 6 % Spandex (PUR), with Wicking Finish Side panels: functional fabric 100% PES, 190 g/m ²
Colours:	1. anthracite 2. red 3. petrol 4. rose
Sizes:	XS, S, M, L, XL
Style:	lady REGULAR FIT

SWING
COOL



kaiser



Light protective sports trousers with a simple technical cut. Functional lightweight yet durable material with high permeability. Comfortable cut does not restrict movement: ideal for multi-pitch climbing, via-ferrata, as well as more demanding trekking.

- Elasticated waist which can be adjusted by belt.
- Simply designed fly, comfortable for use with harness.
- Two zip-pockets on the front.
- Great freedom of movement thanks to careful positioning of stretch panels.
- Abrasion resistant yet elastic material at knees, leg hem and pocket rims.



anthracite red petrol

kaiser	
Weight:	360 g (L)
Material:	Base: Rip-stop elastic fabric 94 % PAD + 6 % Spandex (PUR), with Wicking Finish Knee support: abrasion resistant fabric 59 % Nylon (PAD) + 33 % PES + 8 % PUR
Colours:	1. anthracite 2. red 3. petrol
Sizes:	S, M, L, XL, XXL
Style:	men REGULAR FIT



kaiser 3/4



Light ¾ trousers with technical cut highly sought after by customers. Combination of functional materials. Comfortable cut not restricting movement, ideal for climbing, bouldering, trekking or other outdoor activities.

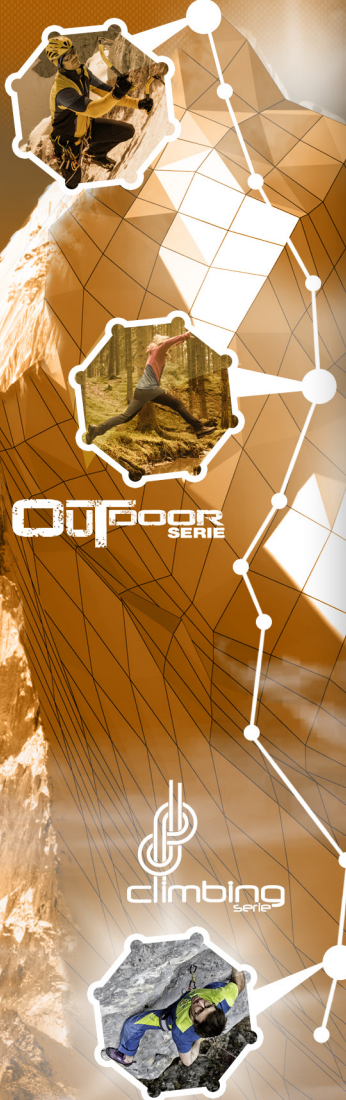
- Elasticated waist adjusted by draw string.
- Simply designed fly, comfortable for use with harness.
- Two front zip pockets.
- The position of the stretch parts ensures a high level of movement flexibility.
- Panels made of firmer fabric on knees and seat.
- Shaped lower edge with comfortable loose ending.



anthracite red petrol

kaiser 3/4	
Weight:	255 g (L)
Material:	Base: Rip-stop elastic fabric - 94 % PAD + 6 % Spandex (PUR), with Wicking Finish Knee, back support: high strength functional fabric 78 % Nylon (PAD) + 10 % Coolmax® (PES) + 12 % Lycra® (PUR)
Colours:	1. anthracite 2. red 3. petrol
Sizes:	S, M, L, XL, XXL
Style:	men REGULAR FIT





civetta



Ladies light protective sports trousers with a simple technical cut. Functional lightweight yet durable material with high permeability. Comfortable cut does not restrict movement: ideal for multi-pitch climbing, via-ferrata, as well as more demanding trekking.

- Elastic waistband with adjustable belt.
- Two zip-pockets on the front.
- Great freedom of movement thanks to careful positioning of stretch panels.
- Abrasion resistant yet elastic material at knees, leg hem and pocket rims.



anthracite

red

petrol

rose

civetta	
Weight:	300 g (M)
Material:	Base: Rip-stop elastic fabric - 94 % PAD + 6 % Spandex (PUR), with Wicking Finish Knee support: abrasion resistant fabric 59 % Nylon (PAD) + 33 % PES + 8 % PUR
Colours:	1. anthracite 3. petrol 2. red 4. rose
Sizes:	XS, S, M, L, XL
Style:	lady REGULAR FIT



Petra - Directalpine test team



civetta 3/4



Ladies light, sports ¾ length pants with a technical cut. A combination of light functional materials for maximum comfort. An anatomically precise cut giving unlimited movement, particularly ideal for mountain activities, via ferrati or hard trekking. Also extremely usable for any kind of outdoor or sports activity, from cycling to hiking, in-line skating or running.

- Elasticated waist with adjustable belt.
- Seat and bottom part of legs from a highly elastic and breathable material.
- Two front pockets.
- Knees fitted with panels made from fray resistant fabric.



black / anthracite
anthracite / red
black / rose

civetta 3/4

Weight:	258 g (M)
Material:	Base: Rip-stop elastic fabric - 94 % PAD + 6 % Spandex (PUR), with Wicking Finish Knee support: abrasion resistant fabric 59 % Nylon (PAD) + 33 % PES + 8 % PUR
Colours:	1. black / anthracite 2. anthracite / red 3. black / rose
Sizes:	XS, S, M, L, XL
Style:	lady
	REGULAR FIT



edge



Durable loose climbing trousers with a casual cut. Durable robust material.

- Wide tough waistband with belt and wide loops for Directalpine belts.
- Comfortable jeans pockets, jeans back pockets.
- Crotch wedge for enhancing mobility.
- Anatomic shaped knees, strengthened at the ankles.
- Loose casual straight style.
- Robust cloth with stone-washed effect, pre-shrunk.



anthracite / blue
petrol / gold

edge	
Weight:	715 g (L)
Material:	98 % cotton + 2 % elastane (PUR), 230g/m ²
Colours:	1. anthracite / blue 2. petrol / gold
Sizes:	S, M, L, XL, XXL
Style:	men (EASY FIT)

edge 3/4



Durable loose climbing ¾ trousers with a casual cut. Durable robust material.

- Wide tough waistband with belt and wide loops for Directalpine belts.
- Comfortable jeans pockets, two back pocket.
- Crotch wedge for enhancing mobility.
- Anatomic shaped knees.
- Shortened loose ¾ length cut, below the knees.
- Robust cloth with stone-washed effect, pre-shrunk.



anthracite / blue
petrol / gold

edge 3/4	
Weight:	570 g (L)
Material:	98 % cotton + 2 % elastane (PUR), 230g/m ²
Colours:	1. anthracite / blue 2. petrol / gold
Sizes:	S, M, L, XL, XXL
Style:	men (EASY FIT)



edge lady



Close-fitting climbing pants with an anatomical cut. Pleasant, lightly stretchable cotton material. Suitable not only for climbing but also for everyday street wear.

- Adjustable waist with a strap and metal buckle.
- Comfortable jeans style pockets plus an additional rear pocket.
- Anatomically shaped knees.
- Close-fitting cut.
- Cotton canvas with Lycra, shrink-fit effect.



anthracite /
red

anthracite /
gold

petrol /
gold

edge lady

Weight:	390 g (M)
Material:	98 % cotton + 2 % elastane (PUR), 230g/m ²
Colours:	1. anthracite / red 2. anthracite / gold 3. petrol / gold
Sizes:	XS, S, M, L, XL
Style:	lady REGULAR FIT

Niky - Climbing gym Šutr
(Directalpine test team)



zion



zion 3/4

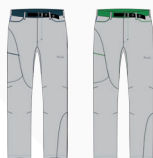


Novelty! Loose climbing pants of casual cut made of unique material with prevailing linen yarn. Thanks to the cooling effect of linen are trousers suitable for all leisure activities, even during the hot summer days. Elastic waist and real saddle material ensures high wearing comfort. Great for hiking, trekking, sport climbing and bouldering, but also for civilian wear.

- Classic waist with flexible rear saddle which can be adjusted by belt.
- Possibility of using classical Directalpine belt.
- Two pass-through deeper pockets. One rear pocket with closing, one additional thigh.
- In the crotch wadded wedge for greater mobility.
- Shaped knees.
- Shaped loose cut of trousers with attractive contrast stitching.



- A fastening tape below the knee allows these pants to be shortened to ¾ length.



sand /
petrol

sand /
green

zion

Weight:	354 g (L)
Material:	100% linen, 174g/m ² Supplement: 96 % cotton + 4 % elasthan (PUR), softened, shrunk
Colours:	1. sand / petrol 2. sand / green
Sizes:	S, M, L, XL, XXL
Style:	men (EASY FIT)



sand /
petrol

sand /
green

zion 3/4

Weight:	285 g (L)
Material:	100% linen, 174g/m ² Supplement: 96 % cotton + 4 % elasthan (PUR), softened, shrunk
Colours:	1. sand / petrol 2. sand / green
Sizes:	S, M, L, XL, XXL
Style:	men (EASY FIT)





panther



Comfortable jeans with a modern cut and attractive design. This stretch material, which includes Cordura fibers, ensures high comfort, great wear resistance and long user-life. Maximum comfort during climbing, bouldering or everyday use thanks to the carefully developed cut, elasticated gusset and strategically placed stretch parts - vertical stretchability across the knee and horizontal stretching on the thighs and bottom – probably the most comfortable pants you'll ever wear! The contrasting stitching and design detail will mark you out as one on the climbing community.

- Classic jeans waist with loops for Directalpine belt.
- Two comfortable pockets and small supplementary pocket. Practical thigh pocket suitable for a telephone (with velcro fastener). A rear pocket with attractive stitching.

- Bottom and knee parts shaped for greater flexibility in the required direction.
- Crotch wedge for enhancing mobility.
- Seamless inner-ankle inserts for increased durability.
- Comfortable loose bottom edge of leg which can be turned up to the required length.
- Strong contrasting stitching.
- Extra details for climbing and bouldering - loops for chalk bag and cleaning brush.



denim



panther lady



Comfortable ladies' jeans with a modern cut and attractive design. This stretch material which includes Cordura fibers ensures high comfort as well as great wear resistance. They have a specially developed cut anatomically adapted to the female figure. Very comfortable not only for climbing and bouldering but also for normal everyday use.

- Classic jeans waist with loops for Directalpine belt.
- Comfortable front pockets. Two rear pockets with attractive stitching.
- Anatomically shaped knees.
- Contrasting ankle inserts.
- Comfortable loose bottom edge of the pants leg which can be turned up to the required length.

- Strong contrasting stitching.

- Extra details for climbing and bouldering - loops for chalk bag and cleaning brush.



denim



attractive stitching

panther	
Weight:	595 g (L)
Material:	Abrasion resistant, mechanically elastic fabric 55 % cotton + 15 % Cordura® (PAD) + 30 % PES
Colours:	1. denim
Sizes:	S, M, L, XL, XXL
Style:	men REGULAR FIT



panther lady	
Weight:	500 g (M)
Material:	Abrasion resistant, mechanically elastic fabric 55 % cotton + 15 % Cordura® (PAD) + 30 % PES
Colours:	1. denim
Sizes:	XS, S, M, L, XL
Style:	lady REGULAR FIT





spotter



A new addition! These attractive and very comfortable pants with a purpose-made combination of materials has been added to our popular range of cotton climbing pants. The front and back parts are of stiffer canvas to give greater wear resistance while the rest is from stretch cotton for real comfort in all your activities, and not just bouldering!

- Comfortable elasticated waist with a drawstring.
- Spacious, simple pockets. Two front pockets, an additional pocket eg. for your telephone, and one fastenable back pocket.
- Practical zip seams.
- Shaped gusset for greater mobility.
- Looser, more comfortable cut.
- Contrast stitching and design details.
- loop for brush.
- Elasticated cuff to secure rolled up trouser leg.



anthracite / petrol anthracite / gold petrol / black crazy mix

spotter	
Weight:	398 g (L)
Material:	Base: 98 % cotton + 2 % elastane (PUR) 230g/m ² Saddle, pocket, back parts: 96 % cotton + 4 % elastane (PUR), softened, shrunk
Colours:	1. anthracite / petrol 3. petrol / black 2. anthracite / gold 4. crazy mix
Sizes:	S, M, L, XL, XXL
Style:	men (EASY FIT)



joshua



The material tried and tested over the years now in an attractive young design, to sum up universal and highly comfortable "climbing" trousers in a cool version. The well designed cut and high quality material with elasthan ensures comfort of the user during any activity. Attractive asymmetric colour scheme with contrasting seams. Model for universal use and the broadest group of customers. Ideal bottom trousers, suitable for bouldering, sports climbing or everyday wear.

- Adjustable waistband with strap and buckle complemented by loops for Directalpine belts.
- Simple, roomy pockets, two front, one additional and one secured rear.
- Practical fly, comfortable, elastic crotch wedge for enhancing mobility.
- Shaped knees.
- The thigh and back parts stretch horizontally and the knee parts vertically, for maximum freedom of movement
- Contrasting elastic stitching + design details constitute an attractive casual style.
- Loop for chalk bag.



black / blue red / petrol green / black petrol / gold blue / petrol / gold crazy mix

joshua	
Weight:	355 g (L)
Material:	96 % cotton + 4 % elasthan (PUR), softened, shrunk
Colours:	1. black / blue 2. red / petrol 3. green / black 4. petrol / gold 5. blue / petrol / gold 6. crazy mix
Sizes:	S, M, L, XL, XXL
Style:	men EASY FIT

joshua 3/4



Tried and tested material, a cool design, Do not restrict movement as a result of use of elasticated fabric. Loose, pleasant, casual cut. Ideal three-quarter length trousers for bouldering, sports climbing or everyday wear in the summer. Attractive colours with asymmetric panels complemented by printed design, striking contrasting stitching.

- Flexible waist with drawstring adjustment.
- Simple, roomy pockets, two front, one additional.
- Without fly for maximum comfort when using harness.
- Elastic crotch wedge for enhancing mobility.
- The thigh and back parts stretch horizontally and the knee parts vertically, for maximum freedom of movement.
- Shaped knees.
- Loop for chalk bag.



black / blue red / petrol green / black petrol / gold

joshua 3/4	
Weight:	250 g (L)
Material:	96 % cotton + 4 % elasthan (PUR), softened, shrunk
Colours:	1. black / blue 2. red / petrol 3. green / black 4. petrol / gold
Sizes:	S, M, L, XL, XXL
Style:	men EASY FIT

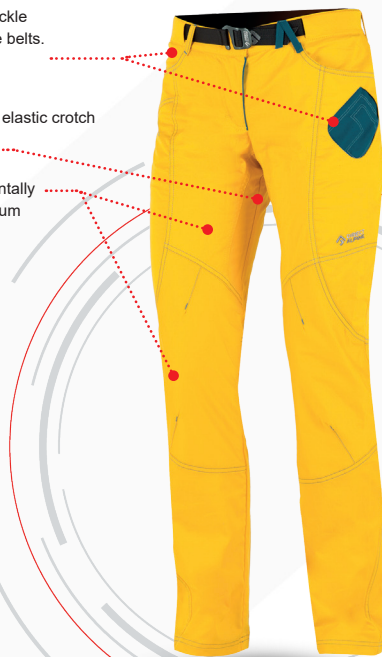


yuka



Leisure ladies' trousers made of comfortable stretch material in a young, attractive design. To sum up, universal, very comfortable "climbing trousers". Thanks to their well-designed, comfortable cut they are great for climbing or bouldering, and also for regular day-to-day wear. Attractive, asymmetrical colour scheme with contrasting seams highlights the outdoor image of each customer.

- Adjustable waistband with strap and buckle complemented by loops for Directalpine belts.
- Simple, roomy pockets, two front, one additional and one secured rear.
- Practical asymmetrical fly, comfortable, elastic crotch wedge for enhancing mobility.
- Shaped knees.
- The thigh and back parts stretch horizontally and the knee parts vertically, for maximum freedom of movement
- Contrasting elastic stitching + design details constitute an attractive casual style.
- Loop for chalk bag.



black / red red / gold petrol / red green / gold gold / petrol

yuka	
Weight:	315 g (M)
Material:	96 % cotton + 4 % elasthan (PUR), softened, shrunk
Colours:	1. black / red 4. green / gold 2. red / gold 5. gold / petrol 3. petrol / red
Sizes:	XS, S, M, L, XL
Style:	lady REGULAR FIT



yuka 3/4



Ladies ¾ pants from a tried and tested stretch material in a fresh and attractive design. Universal and very comfortable, not only "climbers" ¾ pants. Thanks to their specially developed comfortable cut these are excellent not only for all-year-round climbing and bouldering, but also for general everyday wear during summer. The attractive color composition with contrasting seams and color details underlines the outdoor image of each customer.

- Adjustable waist with strap and clasp with additional loops for Directalpine belts.
- Simple roomy pockets, two front, one supplementary pocket and one rear pocket with fastener.
- Practical asymmetrical fly.
- Comfortable elasticated gusset.
- Shaped knees.
- Comfortable, loose ¾ length pants.
- The thigh and back parts stretch horizontally and the knee parts vertically, for maximum freedom of movement.
- Contrasting elastic stitching.
- Loop for chalk bag.



black / red red / gold petrol / red green / gold gold / petrol

yuka 3/4	
Weight:	270 g (M)
Material:	96 % cotton + 4 % elasthan (PUR), softened, shrunk
Colours:	1. black / red 4. green / gold 2. red / gold 5. gold / petrol 3. petrol / red
Sizes:	XS, S, M, L, XL
Style:	lady REGULAR FIT



aosta



New women's casual T-shirt. Attractive asymmetrical design uses effective melange knit fabric. Thanks to the excellent cut, which follows the women's figure, is shirt very comfortable and fits perfectly. Comfy material that withstands this T-shirt for everyday wear. Fancy „lady“ print matches the color of the stitching.



anthracite / rose anthracite / red red petrol gold

aosta	
Weight:	115 g (M)
Material:	100% cotton, 150 g/m ²
Colours:	1. anthracite / rose 2. anthracite / red 3. red 4. petrol 5. gold
Sizes:	XS, S, M, L, XL
Style:	lady



todra



Ladies' singlet with an attractive asymmetrical design. The fitted anatomic bra, elastic shoulder straps and comfortable stretch material make this a very popular ladies' top for sporting and leisure time activities.



black / red petrol / gold

todra	
Weight:	166 g (M)
Material:	94 % cotton + 6 % elasthan (PUR)
Colours:	1. black / red 2. petrol / gold
Sizes:	XS, S, M, L, XL
Style:	lady) SPORT FIT (



flash



T-shirt of a fashionable fitting cut in fashionable pastel colours with printed pen-drawn motives on the chest, quality knit fabric combined with Lycra.

- Print on chest.



flash	
Weight:	180 g (L)
Material:	94 % cotton + 6 % elasthan (PUR), print on chest 17 x 24 cm
Colours:	1. black - my friend 2. black - art of bouldering 3. black - it's been a good day 4. petrol - bouldering 5. petrol - it's been a good day 6. petrol - bouldermaniac 7. gold - bouldermaniac
Sizes:	S, M, L, XL, XXL
Style:	men



black - my friend



black - art of bouldering



black - it's been a good day



petrol - bouldering



petrol - it's been a good day



petrol - bouldermaniac



gold - bouldermaniac



A new men's T-shirt specially tailored for climbing or bouldering. The side panels and developed underarm cut allow comfortable vertical arm movement. This shirt is very comfortable and fits perfectly. Made using a carefully selected combination of material and anatomical cut, this shirt is particularly suitable for outdoor or indoor sports climbing and for bouldering. Thanks to the attractive variegated yarn and asymmetrical color design it is also great for everyday casual wear.



orco	
Weight:	150 g (L)
Material:	100% cotton, 150 g/m ²
Colours:	1. anthracite (art of bouldering) 2. red (art of bouldering) 3. petrol (climb is not dead) 4. petrol / gold (climb is not dead) 5. gold / petrol (climb is not dead)
Sizes:	S, M, L, XL, XXL
Style:	men REGULAR FIT



orco long



Mens T-shirt with long sleeves designed for climbing or bouldering activities. Side panels and a developed underarm cut that enables comfortable vertical arm movement. Anatomically shaped sleeves with loose ends. This T-shirt is extremely comfortable and and sits wonderfully. The pleasant feel of the material and the anatomical cut make this shirt particularly suitable for sports climbing, outside or in hall, and for bouldering. Thanks to the streaked effect knit and attractive asymmetrical color scheme this is also great for normal leisure wear.



orco long	
Weight:	198 g (L)
Material:	100% cotton, 150 g/m ²
Colours:	1. anthracite (art of bouldering) 2. red (art of bouldering) 3. petrol (climb is not dead) 4. petrol / gold (climb is not dead)
Sizes:	S, M, L, XL, XXL
Style:	men REGULAR FIT

active

Sports hat for physical activities. Light stretch highly permeable material. Coolmax hem, running along the inner front, for ever better moisture transport. High comfort ever in hot weather. Adjustable with elastic band.



active	
Weight:	62 g
Material:	Lightweight fabric 94 % PAD Full Dull + 6 % PUR Wicking finish Inner sweatband: Coolmax Active (100% PES)
Colours:	1. black 2. blue
Sizes:	uni
Style:	unisex



cap

Classic cap made of sturdy ripstop-cotton fabric impregnated with Hydrofobric extreme. Adjustable with a buckle in the back. Comfy nature material does not absorb moisture and ensure high comfort in both hot and rainy days.



cap	
Weight:	70 g
Material:	100% cotton, high density fabric, Nanotex DWR treatment, PFOA free, ECO Friendly
Colours:	1. anthracite 2. blue
Sizes:	uni
Style:	unisex



flexi

Sporty mountain cap made of soft functional Cordura. Functional Coolmax strip on the forehead. Stretch material and elastic hem ensure good fit and comfortable wearing during whole year.



flexi	
Weight:	38 g
Material:	Cordura® WBL system - 46 % Cordura® (PAD) + 32 % Tactel® (PES) + 14 % Lycra® (PUR) + 8 % Coolmax® (PES) Fabric is certified as bluesign® approved Coolmax Active (100% PES) Inner sweatband: Coolmax Active (100% PES)
Colours:	1. black 2. blue 3. red
Sizes:	uni
Style:	unisex



fidel

Hat in trendy shape made of sturdy ripstop-cotton fabric impregnated with Hydrofobric extreme. Strap adjuster with metal clip. Comfy nature material does not absorb moisture and ensure high comfort in both hot and rainy days.



fidel	
Weight:	76 g
Material:	100% cotton, high density fabric, Nanotex DWR treatment, PFOA free, ECO Friendly
Colours:	1. anthracite 2. blue
Sizes:	uni
Style:	unisex



multi



A multifunctional scarf made from stretch polyester microfibers. The high elasticity of this material allows it to be used in many different ways – as a headband, neck scarf, sweatband, in summer under a helmet etc. etc. A great accessory to your outfit which will add to your comfort and protect you in inclement weather outdoors, in the mountains, hiking or cycling. It has an attractive printed design with the DIRECTALPINE logo.



logo



graphics

multi	
Weight:	30 g
Material:	100% PES microfibre (technical fibre)
Colours:	1. black - logo 2. black - graphics
Sizes:	uni
Style:	unisex

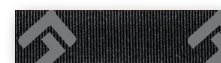
belt basic



Visually impressive strap belt with modern metal buckle and stamped design, suitable for travelling and everyday wear.



belt basic	
Weight:	40 g
Material:	100% PAD
Colours:	1. black logo
Sizes:	uni - 118 cm, 2,5 cm width
Style:	unisex



black logo

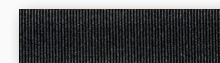
belt



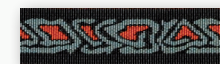
Strong strap belt with woven motifs and strong metal buckle. In an emergency, the strong stitching also makes it possible to use it for securing when climbing or belaying.



belt	
Weight:	106 g
Material:	100% PAD
Colours:	1. black 2. black logo 3. aztek
Sizes:	uni - 125 cm, 3,8 cm width
Style:	unisex



black



aztek

express plus



Softshell gloves. Antislip reinforcing of palms and fingers. Anatomical cut, neoprene end of wrist, highly practical membrane cover over top of glove against wind and water.



black



express plus	
Weight:	100 g
Material:	Eurotex softshell windproof, Nappa-Leather, Carpal tunnel, cover 10.000 mm H ₂ O
Colours:	1. black
Sizes:	S, M, L, XL, XXL
Style:	unisex

braces D.A.



Adjustable braces intended for Direct Alpine trousers with integrated loops. The loops on the trousers are located in such a way that when wearing more than one layer you need only pass one pair of braces through all the loops.



black

braces D.A.	
Weight:	70 g
Material:	97 % PES + 3 % elasthan (PUR)
Colours:	1. black
Sizes:	S, M, L, XL
Style:	unisex



materials

4wayTex®

4wayTex®

4WAYTEX is a trademark of DIRECTALPINE company materials of sandwich construction, which individual layers, properly combined, ensure excellent product parameters. SOFTSHELL 4WAYTEX is focused for excellent permeability of laminate along with maintaining low weight and sufficient wind and waterproofness.



Coolmax®

Coolmax® is a high tech fabric specifically and uniquely engineered to keep users dry and comfortable. Coolmax® fabrics are made from specially engineered polyester fibres from ADVANSA with an increased surface area. This special four-channel or six-channel fibre forms a transport system that pulls moisture away from the skin to the outer layer of the fabric.



Coolmax® All Season Technology

Coolmax® All Season Technology provides warmth and comfort without weight, even when wet. It's the lightweight fabric that provides heavy-duty performance engineered hollow-core fibres that trap air for greater insulation. Coolmax® All Season T. is the perfect layering fabric because it's comfortable and lightweight, allowing more freedom of movement.



Cordura®

CORDURA® fabric is durable, versatile and reliable. Constructed using high tenacity fiber technologies.



Dermizax™

Dermizax™ is a waterproof, windproof, and wicking membrane that is specially developed to provide protection against all kinds of weather while remaining as comfortable as possible. Dermizax™ membrane is a hydrophilic material that utilizes moving molecules, as opposed to most other membranes which have micropores. This offers a number of advantages and makes Dermizax™ shell clothing the very best on the market thanks to its high performance and superior durability.



Dynamic soft shell

2-3 layer laminate with excellent permeability. Material developed with particular focus on vapour-permeability along with low weight and sufficient wind and waterproofness. Weight-light, flowing laminate with inner fleece insulating layer.



DuPont Sorona – Espol

Sorona® renewably sourced fiber delivers superior performance benefits to sustainable clothing. Fabrics that use Sorona® are very soft, very strong and dry quickly. Sorona® helps fabrics stretch comfortably and retain their shape. Sorona® contains 37% annually renewable plant-based ingredients by weight.



Freshcool

Freshcool combines 2 technologies into 1 textile. Outside protects the textile from water, dirt and stain. Inside moisture from the skin is absorbed and quickly transmit to the outside.



Gelanots

Soft and flexible with only thin PU membrane, but advanced in waterproof & windproof & breathability. Offering high level of comfort by its hydrophilic monolithic membrane (non porous). Eco – friendly non fluorinated fabric. Made by Toyota Tsusho (Japan).



Gelanots HB

A polyurethane hydrophilic monolithic membrane with extreme thinness (12 – 15 micron). In addition to maintaining the basic features of waterproofness and windproofness, this membrane will keep you comfortable under wet and humid conditions through its high breathability up to 39.000 g/m²/24h in B1 testing. Eco – friendly non fluorinated fabric. Made by Toyota Tsusho (Japan).



Hybrid system

The main aim of the Hybrid system is to find the balance (joining different kinds of materials) or optimal functionality of the product ("WWW" – waterproof, windproof, vapour permeability). It is often the case of joining membrane and non-membrane materials, completed with functional knitting to optimise the functionality.



Moisture management

Chemically modified polyamid fabric in which the fibres encourage moisture to transport moisture away from the skin to the garment's outer surface.



Hydrophobic Extreme

A revolutionary new textile treatment for woven, knitted or non-woven fabrics. This is a high-quality repellent which relies on a thin layer of nano-particles on the surface of the fabric to create an extremely water-repellant and oleophobic surface. This layer coats each individual fiber in the threads of the material. Thanks to this, the repellent has a very long user-life and hardly ever washes out and maintains the material's original breathability. The extremely high effectiveness of this hydrophobic and oleophobic treatment means that water, wine, coffee or grease have no chance of staining or damaging your garment. The repellent causes absolutely no reaction with the skin, as proven by top Belgian laboratories. During the production process it is applied to the dry textile using a plasma method. This process has very little ecological impact as no waste is produced during the application, unlike with other repellants. This material also naturally biodegradable.



Polartec® Power Dry®

Polartec® Power Dry® fabrics are designed to keep your skin dry when you sweat. Ideal for runners, skiers, and adventure travelers, all fabrics in this series feature a patented bi-component knit construction that uses different yarns on either side of the fabric. This creates two different surfaces: one that is optimized to move moisture away from the skin, the other to dry quickly.



Richter by Südrolle

100% merino wool made of best quality Südrolle yarn. Thanks to its unique fibre structure has merino unique warmth, anti-bacterial ability and is odour resistant. Absorbed moisture becomes warmer very quickly so wet garment does not chill. All listed unique abilities makes Merino garments perfect choice for any outdoor activity.



Swing Cool - changed name

Soft and comfortable fabric, keeps cool and dry. Long lasting performance – wash after wash.



Tecnostretch

Pontetorto Tecnostretch, is ideal for base and mid layering. The component yarns make the face durable, whilst the polyester reverse has both insulation and wicking properties - added elastomer ensures a body hugging fit.



Thermocool

ADVANCE ThermoCool is designed to optimize the body's natural thermoregulation capabilities through smart fibre cross-sections: providing evaporative cooling or thermo-buffering according to the wearer's needs.



Nature top friendly

We designate DIRECTALPINE products as "NATURE TOP FRIENDLY". Development and production of materials and these products is implemented wholly in countries with maximum ecological standards. These are given by the high living standard and naturally by legislation. In practice it means that during the production or dyeing of fabrics all waste is ecologically liquidated and waste water is treated when it comes out of the factory. Nature Top Friendly clothing is manufactured exclusively in European countries from materials that also come from Europe, or from materials coming from developed countries with high environmental standards, such as Japan, South Korea or the USA. This minimises the ecological impact caused by shipping goods over long distances. Everything is done within European countries. If products are manufactured from recycled material or can be recycled easily, we also mark this on specific products.



Bluesign®

Textiles and accessories carrying the bluesign® approved label meet the strict safety and environmental requirements of the bluesign® criteria. These articles are made from bluesign® approved chemical products and raw materials and are produced in a resource conserving way with minimum impact on people and the environment.



NEVER OUT OF STOCK programme

Models which you can assume will always been in stock in standard sizes throughout the entire main sales season. Stock numbers are under constant monitoring, and if for non-standard, unanticipated reasons one of the sizes is sold out, operative additional production is prepared with a delivery period of approximately one month from your order. After the season, in the period of any post-season sales, it is no longer possible to guarantee full availability.



promo materials

flag 4 m



flag 2 m



lunghta flag

Cardboard screen
(50 x 100 cm)Cardboard screen
(21 x 29 cm)

ACTIVE.....	60
AOSTA.....	57
ATTACK.....	15
ATTACK LADY.....	15
BADILE.....	25
BADILE LADY.....	25
BEAM.....	34
BEAM LADY.....	34
BELT.....	61
BELT BASIC.....	61
BORNEO.....	35
BOSCO.....	43
BRACES D.A.	61
CAP.....	60
CASCADE LADY.....	16
CASCADE LIGHT.....	17
CASCADE PLUS.....	16
CIVETTA.....	48
CIVETTA 3/4.....	49
CLIFF.....	24

CORTINA.....	40
CORTINA 3/4.....	40
CORTINA SHORT.....	41
CRACK.....	42
CRUISE.....	10
CRUISE LADY.....	10
CRUISE 3/4.....	12
CRUISE 3/4 LADY.....	12
CRUISE SHORT.....	13
CRUISE TECH.....	11
DEFENDER.....	28
DRU.....	9
EDGE.....	50
EDGE 3/4.....	50
EDGE LADY.....	51
EIRA.....	27
EXPRESS PLUS.....	61
FIDEL.....	60
FLASH.....	58
FLEXI.....	60
FURRY.....	21
GAIA.....	46
GAVIA.....	26

GUIDE.....	6
GUIDE LADY.....	7
JASMIN.....	41
JORASSES.....	14
JOSHUA.....	55
JOSHUA 3/4.....	55
KAISER.....	47
KAISER 3/4.....	47
LASER.....	20
MADEIRA.....	37
MIDI.....	8
MOUNTAINER.....	29
MOUNTAINER CARGO.....	29
MOUNTAINER TECH.....	30
MULTI.....	61
NELSON.....	36
ORCO.....	59
ORCO LONG.....	59
ORGANIC.....	44
ORGANIC LADY.....	44
PANTHER.....	53
PANTHER LADY.....	53
PATROL.....	31

PATROL LADY.....	33
PATROL LADY FIT.....	33
PATROL TECH.....	32
PELMO.....	39
PELMO 3/4.....	39
RAY.....	38
SAMBA.....	20
SANDY.....	38
SHARK.....	19
SIERRA.....	35
SPOTTER.....	54
TACUL.....	46
TALUNG.....	23
TANAMA.....	25
TODRA.....	57
TONALE.....	26
TORNADO.....	18
TRIP.....	36
YUKA.....	56
YUKA 3/4.....	56
ZION.....	52
ZION 3/4.....	52

marker
EUmarker
CZsticker logo
(6 x 2,5 cm)sticker territory
(12 x 12 cm)sticker alpinist
(8 cm)sticker climber
(8 cm)sticker skitour
(8 cm)directalpine size chart
mens - jackets, pullovers

	XS	S	M	L	XL	XXL
Body height	169-173	173-177	177-181	181-185	185-189	189-192
Sleeve	74	77	81	85	89	92
Hip	93	96	100	104	108	112
Chest	89	92	96	100	104	108

mens - pants

	XS	S	M	L	XL	XXL
Body height	169-173	173-177	177-181	181-185	185-189	189-192
Lenght inseam	79	81	84	87	90	92
Waist	75	78	82	86	90	94
Hip	93	96	100	104	108	112

Version SHORT: Lenght inseam M/L -4 cm, XL -6 cm, XXL -8 cm

Tolerance +/- 1 cm

gloves

	S	M	L	XL
Palm circuit	19	20,5	22	23,5

womens - jackets, pullovers

	XS	S	M	L	XL
Body height	158-162	162-166	166-170	170-174	174-178
Sleeve	68	71	75	79	83
Hip	93	96	100	104	108
Chest	88	91	95	99	103

womens - pants

	XS	S	M	L	XL
Body height	158-162	162-166	166-170	170-174	174-178
Lenght inseam	77	80	83	86	89
Waist	67	70	74	78	82
Hip	93	96	100	104	108

Version SHORT: Lenght inseam M -4cm, L -6cm, XL -8cm

Tolerance +/- 1 cm

caps

	S	M	L
Head	40-50	47-55	55-65