

2018



Rafiki

## WOMEN'S COLLECTION

---

KISS	6
MELODY	7
LAIKA	8
SHEEN	9
PASSION	10
JUDY	11
JAY	12
MANCHA	13
ROOT	14
NIKA II	15
ACCY	16
HOWE	17
CAYE	18
WINNIE	19
CAT	20
CAT PRINT	20
CAT L	21
CAT L PRINT	21
RAYEN	23
ETNIA	24
ETNIA JEANS	25
ALYSSIA	26
LORRE	27

## MEN'S COLLECTION

---

BOGGS	32
HANK II	33
SLACK	34
JAMAR	35
RAID	36
FILE II	37
ANUK	38
REBOLT	39
CLIMBY	40
CLIFFBASE	41
RESULT	42
BOMBER	43
FAUX	44
VERTIC	45

## CHILDREN'S COLLECTION

---

BOBBY JR	50
PIKE JR	51

## WINTER COLLECTION

---

MEG II	54
FLYNN	55
SHINE	56
ADORE	57
COLIN II	58
FLETCHER	59
SABRE	60

## ACCESSORIES

---

TALUS	64
ROPER	64
FLINT	65
CARRYALL	65
CHINO	66
CRUZ	66
ROCKY	67
FLEX	67
SCOOP	69
CHALK	69

## PROMOTION

---

BOW FLAG	72
BANNER	72
LOGO STAND	73
CUBE	73
WRISTBAND	74
STICKERS	74
TRESS RF	75
SLACK BASIC	75



# KISS SINGLET

118RF0301KS

RRP ..... WSP .....

**ACTIVITIES:** Climbing, Bouldering  
**BENEFITS:** breathable, stretch, soft

**PRODUCT FEATURES:**

- elastic fabric
- inner bra

**MAIN MATERIAL:** single jersey 160  
95% cotton 5% elastane

**FINISHING:** silicone wash

**FIT:** slim

**SIZE:** 34-42

**WEIGHT:** 95 g (36)



Beaujolais/ blue **NEW**



Majolica blue/ blue **NEW**



Bluebird/ orange **NEW**



# MELODY SINGLET

118RF0302KS

RRP ..... WSP .....

**ACTIVITIES:** Climbing, Bouldering, Travel

**BENEFITS:** breathable, stretch, soft

**PRODUCT FEATURES:**

- elastic fabric

**MAIN MATERIAL:** single jersey 160

95% cotton 5% elastane

**FINISHING:** silicone wash

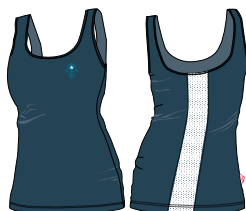
**FIT:** regular

**SIZE:** 34-42

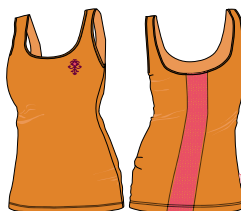
**WEIGHT:** 75 g [36]



Beaujolais



Majolica blue



Dark cheddar





# LAIKA SINGLET

118RF0303KS

RRP ..... WSP .....

**ACTIVITIES:** Climbing, Bouldering  
**BENEFITS:** breathable, stretch, soft

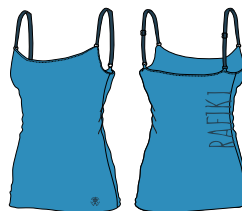
**PRODUCT FEATURES:**  
- elastic fabric  
- adjustable shoulder straps

**MAIN MATERIAL:** single jersey 160  
95% cotton 5% elastane  
**FINISHING:** silicone wash

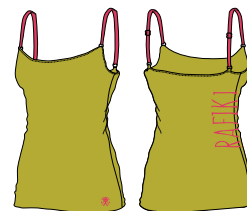
**FIT:** slim  
**SIZE:** 34-42  
**WEIGHT:** 80 g [36]



Paradise Pink



Vivid Blue



Citronelle

# SHEEN SINGLET

118RF0304KS **NEW**

RRP ..... WSP .....

**ACTIVITIES:** Climbing, Bouldering  
**BENEFITS:** breathable, lightweight, stretch

**PRODUCT FEATURES:**  
- stretch fabric

**MAIN MATERIAL:** 87% polyester 13% elastane

**FIT:** slim  
**SIZE:** 34-42  
**WEIGHT:** 110 g (36)



Cabaret



Exotic



Jade cream





# PASSION<sup>BRA</sup>

118RF0306KS

**NEW**

RRP ..... WSP .....

**ACTIVITIES:** Climbing, Bouldering  
**BENEFITS:** breathable, lightweight, stretch

**PRODUCT FEATURES:**  
- stretch fabric

**MAIN MATERIAL:** 87% polyester 13% elastane

**FIT:** slim

**SIZE:** 34-42

**WEIGHT:** 100 g (36)



Cabaret



Majolica blue



Exotic



Jade cream





# JUDY SHORT SLEEVE T-SHIRT

118RF0307KT

RRP ..... WSP .....

**ACTIVITIES:** Climbing, Bouldering, Travel

**BENEFITS:** breathable, stretch, soft

**PRODUCT FEATURES:**

- elastic fabric
- prints variation
- front and back rounded low-hem

**MAIN MATERIAL:** single jersey 160

95% cotton 5% elastane

**FINISHING:** silicone wash

**FIT:** straight

**SIZE:** 34-44

**WEIGHT:** 100 g (36)



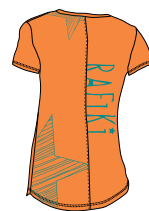
Majolica blue **NEW**



Bluebird **NEW**



Bright white **NEW**



Firecracker **NEW**





# JAY SHORT SLEEVE T-SHIRT

118RF0308KT

RRP ..... WSP .....



**ACTIVITIES:** Climbing, Bouldering, Travel  
**BENEFITS:** breathable, soft

**MAIN MATERIAL:** single jersey 160  
 100% organic cotton

**FINISHING:** bio washed

**PRODUCT FEATURES:**

- prints variation
- wider neck opening

**FIT:** regular

**SIZE:** 34-42

**WEIGHT:** 95 g (36)



Cabaret



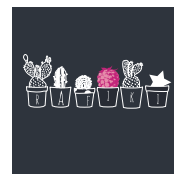
Enamel blue



Dark Navy



Jade Cream



# MANCHA LONG SLEEVE T-SHIRT

118RF0309KL

**NEW**

RRP ..... WSP .....

**ACTIVITIES:** Climbing, Bouldering, Travel

**BENEFITS:** breathable, stretch, soft

**PRODUCT FEATURES:**

- elastic fabric
- prints variation

**MAIN MATERIAL:** single jersey 160

95% cotton 5% elastane

**FINISHING:** silicone wash

**FIT:** straight

**SIZE:** 34-44

**WEIGHT:** 200 g (36)



Beaujolais



Exotic



Firecracker





# ROOT FULL-ZIP HOODY

118RF0310KM

RRP ..... WSP .....

**ACTIVITIES:** Climbing, Bouldering

**BENEFITS:** breathable, lightweight, YKK zippers

## PRODUCT FEATURES:

- 2 zipped main pockets
- fixed hood with regulation
- cuffs with elastic binding
- ribbed bottom hem

**MAIN MATERIAL:** 60% cotton 40% polyester

**OTHER:** 93% cotton 7% elastane (rib cuff)

**FIT:** straight

**SIZE:** 34-42

**WEIGHT:** 445 g (36)



Beaujolais **NEW**



Bluebird **NEW**



Paradise Pink



Majolica blue



# Nika II HOODY

118RF0311KM **NEW**

RRP ..... WSP .....

**ACTIVITIES:** Climbing, Bouldering  
**BENEFITS:** breathable, lightweight

**PRODUCT FEATURES:**  
 - fixed hood with regulation  
 - kangaroo pocket  
 - ribbed sleeve cuffs  
 - ribbed bottom hem

**MAIN MATERIAL:** 60% cotton 40% polyester  
**OTHER:** 93% cotton 7% elastane (rib cuff)

**FIT:** regular  
**SIZE:** 34-42  
**WEIGHT:** 410 g (36)



Beaujolais



Majolica blue



Bluebird





# Accy SHORTS

118RF0312LK

RRP ..... WSP .....

**ACTIVITIES:** Climbing, Bouldering

**BENEFITS:** breathable, lightweight, stretch, soft

**PRODUCT FEATURES:**

- Comfortable ribbed waistband
- 2 front pockets
- 2 rear pockets

**MAIN MATERIAL:** 97% cotton 3% elastane

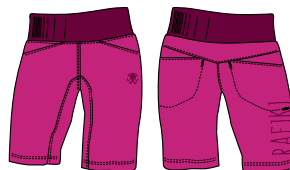
**OTHER:** 93% cotton 7% elastane (rib cuff)

**FINISHING:** washed

**FIT:** straight

**SIZE:** 32-42

**WEIGHT:** 170 g (36)



Cabaret **NEW**



Enamel blue **NEW**



Beaujolais exotic **NEW**



Beaujolais



Paradise pink



Seaport



Dark navy



Citronelle

# HOWE SHORTS

118RF0313LK

RRP ..... WSP .....

**ACTIVITIES:** Climbing, Bouldering

**BENEFITS:** breathable, lightweight, stretch, durable

**PRODUCT FEATURES:**

- adjustable partly-elastic waistband
- 2 front pockets

**MAIN MATERIAL:** 97% cotton 3% elastane

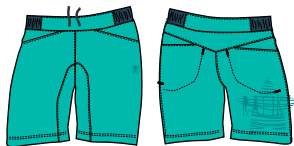
**OTHER:** 93% cotton 7% elastane (rib cuff)

**FINISHING:** washed

**FIT:** straight

**SIZE:** 34-42

**WEIGHT:** 195 g (36)



Bluebird **NEW**



Poinciana **NEW**



Paradise pink



Vivid blue



Citronelle





# CAYE SHORTS

118RF0314LK

RRP ..... WSP .....

**ACTIVITIES:** Travel

**BENEFITS:** breathable, stretch, soft,  
YKK zippers

**PRODUCT FEATURES:**

- belt loops
- 2 front pockets
- 2 rear patch pockets with flaps
- gusset for freedom of movement

**MAIN MATERIAL:** 98% cotton 2% elastane

**FINISHING:** twill carbon peach , washed

**FIT:** regular

**SIZE:** 34-42

**WEIGHT:** 245 g (36)



Cabaret **NEW**



Enamel blue **NEW**

Majolica exotic **NEW**

Poinciana **NEW**



Beaujolais



Majolica blue



# WINNIE SKIRT

118RF0316LX

RRP ..... WSP .....

**ACTIVITIES:** Climbing, Bouldering, Travel

**BENEFITS:** breathable, soft, YKK zippers

**PRODUCT FEATURES:**

- adjustable elastic waistband
- kangaroo pocket
- small inside pocket

**MAIN MATERIAL:** 60% cotton 40% polyester

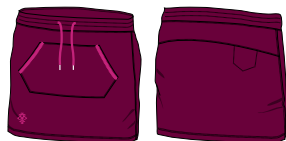
**OTHER:** 93% cotton 7% elastane (rib cuff)

**FINISHING:** silicone wash

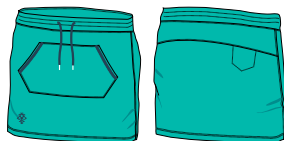
**FIT:** regular

**SIZE:** 34-42

**WEIGHT:** 200 g (36)



Beaujolais **NEW**



Bluebird **NEW**



Paradise pink



Majolica blue





## CAT 3/4 TIGHTS

118RF0317LK

RRP ..... WSP .....

**ACTIVITIES:** Climbing, Bouldering

**BENEFITS:** breathable, lightweight, stretch

### PRODUCT FEATURES:

- elastic waist
- comfortable fit with flat seams
- full area print

**MAIN MATERIAL:** 87% polyester, 13% elastane

**FIT:** slim

**SIZE:** 34-42

**WEIGHT:** 190 g [36]

## CAT PRINT

118RF0371LK

**NEW**

RRP ..... WSP .....

**ACTIVITIES:** Climbing, Bouldering

**BENEFITS:** breathable, lightweight, stretch

### PRODUCT FEATURES:

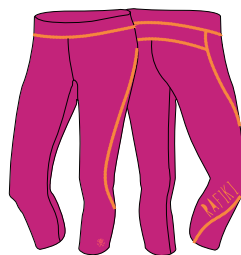
- elastic waist
- comfortable fit with flat seams
- full area print

**MAIN MATERIAL:** 87% polyester, 13% elastane

**FIT:** slim

**SIZE:** 34-42

**WEIGHT:** 190 g [36]



Cabaret **NEW**



Beaujolais



Majolica blue



Exotic

# CAT L TIGHTS

118RF0320LP

**NEW**

RRP ..... WSP .....

**ACTIVITIES:** Climbing, Bouldering

**BENEFITS:** breathable, lightweight, stretch

**PRODUCT FEATURES:**

- elastic waist
- comfortable fit with flat seams

**MAIN MATERIAL:** 87% polyester, 13% elastane

**FIT:** slim

**SIZE:** 34-42

**WEIGHT:** 230 g (36)



Cabaret

Majolica blue

# CAT L PRINT

118RF0372LP

**NEW**

RRP ..... WSP .....

**ACTIVITIES:** Climbing, Bouldering

**BENEFITS:** breathable, lightweight, stretch

**PRODUCT FEATURES:**

- elastic waist
- comfortable fit with flat seams
- full area print

**MAIN MATERIAL:** 87% polyester, 13% elastane

**FIT:** slim

**SIZE:** 34-42

**WEIGHT:** 230 g (36)



Exotic



# RAYEN PANTS

118RF0322LP

RRP ..... WSP .....

**ACTIVITIES:** Climbing, Bouldering

**BENEFITS:** breathable, stretch, durable,  
YKK zippers

## PRODUCT FEATURES:

- adjustable partly-elastic waistband
- 2 front pockets
- 2 rear patch pockets
- gusset for freedom of movement
- ergonomic pre-shaped knees
- bottom leg regulation with drawstring
- side loops for brush

**MAIN MATERIAL:** 97% cotton 3% elastane

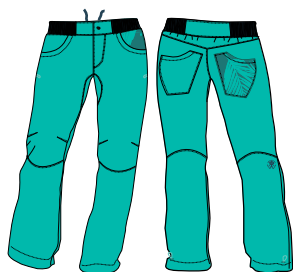
**OTHER:** 93% cotton 7% elastane (rib cuff)

**FINISHING:** washed

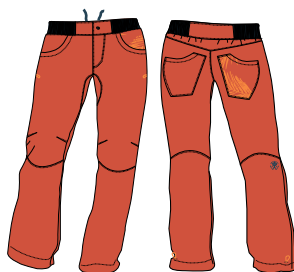
**FIT:** regular

**SIZE:** 34-42/ 34+/ 36+

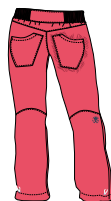
**WEIGHT:** 340 g (36)



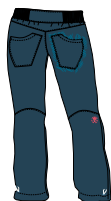
Bluebird **NEW**



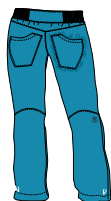
Poinciana **NEW**



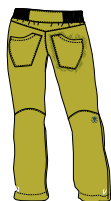
Paradise pink



Majolica blue



Vivid blue



Citronelle







# ETNIA PANTS

118RF0323LP

RRP ..... WSP .....

**ACTIVITIES:** Climbing, Bouldering  
**BENEFITS:** breathable, lightweight, stretch

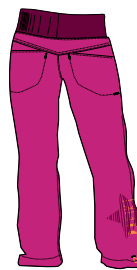
**PRODUCT FEATURES:**  
 - ribbed waistband  
 - 2 front pockets  
 - 2 rear pockets  
 - bottom leg regulation with drawstring

**MAIN MATERIAL:** 87% polyester, 13% elastane  
**OTHER:** 93% cotton 7% elastane (rib cuff)

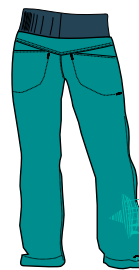
**FIT:** straight  
**SIZE:** 34-42/ 34+/ 36+  
**WEIGHT:** 330 g (36)



Beaujolais exotic **NEW**



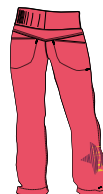
Cabaret **NEW**



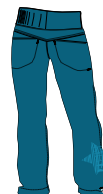
Enamel blue **NEW**



Beaujolais



Paradise Pink



Seaport



Dark Navy



Vivid blue



Citronelle

# ETNIA JEANS PANTS

118RF0325LP

RRP ..... WSP .....

**ACTIVITIES:** Climbing, Bouldering

**BENEFITS:** breathable, stretch, durable

**PRODUCT FEATURES:**

- ribbed waistband
- 2 front pockets
- 2 rear pockets
- bottom leg regulation with drawstring

**MAIN MATERIAL:** 98% cotton, 2% elastane denim

**OTHER:** 93% cotton 7% elastane (rib cuff)

**FINISHING:** washed

**FIT:** straight

**SIZE:** 34-42

**WEIGHT:** 390 g (36)



Denim



Night denim





# ALYSSIA PANTS

118RF0326LP

RRP ..... WSP .....

## ACTIVITIES: Travel

**BENEFITS:** breathable, stretch, soft,  
YKK zippers

## PRODUCT FEATURES:

- belt loops
- 2 front pockets
- 2 rear patch pockets with flaps
- gusset for freedom of movement

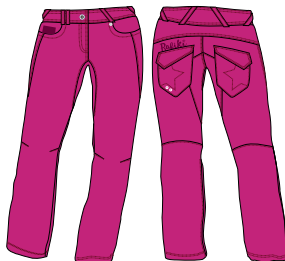
**MAIN MATERIAL:** 98% cotton 2% elastane

**FINISHING:** twill carbon peach , washed

**FIT:** regular

**SIZE:** 34-42

**WEIGHT:** 390 g (36)

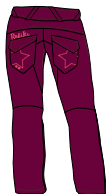


Cabaret **NEW**



Enamel blue **NEW**

Majolica exotic **NEW**



Beaujolais



Majolica blue

# LORRE PANTS

118RF0328LP

RRP ..... WSP .....

**ACTIVITIES:** Travel, Bouldering

**BENEFITS:** breathable, stretch, durable,  
YKK zippers

**PRODUCT FEATURES:**

- belt loops
- 2 front pockets
- 2 rear patch pockets with flaps
- gusset for freedom of movement
- bottom leg regulation with drawstring
- side loops for brush

**MAIN MATERIAL:** 98% cotton, 2% elastane denim

**FINISHING:** washed

**FIT:** straight

**SIZE:** 34-42

**WEIGHT:** 580 g (36)



Denim



Night Denim







# BOGGS SCAMPOLO

118RF0329KS

RRP ..... WSP .....

**ACTIVITIES:** Climbing, Bouldering

**BENEFITS:** breathable, stretch

**PRODUCT FEATURES:**

- elastic fabric
- wider shoulder straps

**MAIN MATERIAL:** single jersey 160

95% cotton 5% elastane

**FINISHING:** silicone wash

**FIT:** straight

**SIZE:** S-XXL

**WEIGHT:** 100 g (M)



Pewter



Garnet



Dark Navy



Citronelle

# HANK II

## SHORT SLEEVE T-SHIRT

118RF0330KT

**NEW**

RRP ..... WSP .....

**ACTIVITIES:** Climbing, Bouldering

**BENEFITS:** breathable, stretch

**PRODUCT FEATURES:**

- elastic fabric

**MAIN MATERIAL:** single jersey 160

95% cotton 5% elastane

**FINISHING:** silicone wash

**FIT:** straight

**SIZE:** XS-XL

**WEIGHT:** 150 g (M)



Dark Exotic



Majolica blue



Enamel blue



# SLACK SHORT SLEEVE T-SHIRT

118RF0331KT

RRP ..... WSP .....



**ACTIVITIES:** Climbing, Bouldering, Travel

**BENEFITS:** breathable, organic

**PRODUCT FEATURES:**

- prints variation

**MAIN MATERIAL:** single jersey 160

100% organic cotton

**FINISHING:** fabric bio washed

**FIT:** regular

**SIZE:** XS-XL

**WEIGHT:** 150 g (M)



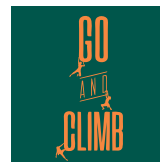
Beaujolais **NEW**

Bluebird **NEW**

Dark navy **NEW**

Bayberry **NEW**

Poinciana **NEW**



# JAMAR LONG SLEEVE T-SHIRT

118RF0332KL

NEW

RRP ..... WSP .....

**ACTIVITIES:** Climbing, Bouldering, Travel

**BENEFITS:** breathable, stretch

**PRODUCT FEATURES:**

- elastic fabric

**MAIN MATERIAL:** single jersey 160

95% cotton 5% elastane

**FINISHING:** silicone wash

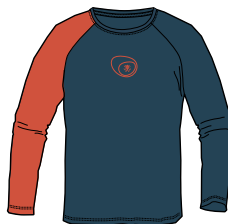
**FIT:** straight

**SIZE:** XS-XL

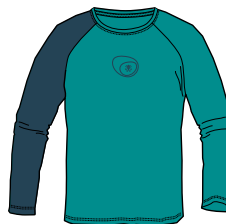
**WEIGHT:** 190 g (M)



Dark Exotic



Majolica blue



Enamel blue







# RAID FULL-ZIP HOODY

118RF0333KM

NEW

RRP ..... WSP .....

**ACTIVITIES:** Climbing, Bouldering  
**BENEFITS:** breathable, lightweight,  
YKK zippers

## PRODUCT FEATURES:

- 2 main pockets
- fixed hood with regulation
- cuffs with elastic binding
- ribbed bottom hem

**MAIN MATERIAL:** 60% cotton 40% polyester

**OTHER:** 93% cotton 7% elastane (rib cuff)

**FINISHING:** silicone wash

**FIT:** straight

**SIZE:** S-XXL

**WEIGHT:** 605 g (M)



Enamel blue



Poinciana

# FILE II HOODY

118RF0334KM

NEW

RRP ..... WSP .....

**ACTIVITIES:** Climbing, Bouldering  
**BENEFITS:** breathable, lightweight

**PRODUCT FEATURES:**

- fixed hood with regulation
- kangaroo pocket
- ribbed sleeve cuffs
- ribbed bottom hem

**MAIN MATERIAL:** 60% cotton 40% polyester  
**OTHER:** 93% cotton 7% elastane (rib cuff)  
**FINISHING:** silicone wash

**FIT:** regular

**SIZE:** S-XXL

**WEIGHT:** 530 g (M)



Majolica Blue



Enamel blue



Poinciana





# ANUK SHORTS

118RF0335LK

RRP ..... WSP .....

**ACTIVITIES:** Climbing, Bouldering  
**BENEFITS:** breathable, durable, stretch

**PRODUCT FEATURES:**  
- elastic waistband  
- 1 rear pocket  
- gusset for freedom of movement  
- side loops for brush

**MAIN MATERIAL:** 97% cotton 3% elastane  
**FINISHING:** washed

**FIT:** regular  
**SIZE:** XS-XL  
**WEIGHT:** 215 g (M)



Enamel Blue **NEW**



Poinciana **NEW**



Pewter

Garnet

Lipstick red

Seaport

Dark navy

Limoges

Golden spice

# REBOLT SHORTS

118RF0336LK

RRP ..... WSP .....

**ACTIVITIES:** Climbing, Bouldering

**BENEFITS:** breathable, durable, stretch,  
YKK zipper

**PRODUCT FEATURES:**

- partly elastic waistband
- 2 front pockets
- 1 rear pockets
- gusset for freedom of movement
- Velcro fly opening
- side loops for brush

**MAIN MATERIAL:** 97% cotton 3% elastane

**FINISHING:** washed

**FIT:** straight

**SIZE:** S-XXL

**WEIGHT:** 250 g (M)



Enamel Blue **NEW**



Poinciana **NEW**



Seaport

Golden spice







# CLIMBY SHORTS

118RF0337LK

RRP ..... WSP .....

**ACTIVITIES:** Bouldering, Travel  
**BENEFITS:** breathable, stretch, soft,  
YKK zippers

**PRODUCT FEATURES:**

- partly elastic waistband
- belt loops
- 2 front pockets
- 2 rear patch pockets
- 1 thigh pocket with flap
- gusset for freedom of movement
- brush pocket

**MAIN MATERIAL:** 98% cotton 2% elastane

**FINISHING:** twill carbon peach , washed

**FIT:** regular

**SIZE:** S-XXL

**WEIGHT:** 295 g (M)



Enamel Blue **NEW**



Majolica Exotic **NEW**



Poinciana **NEW**



Majolica blue



Bayberry **NEW**



# CLIFFBASE 3/4 PANTS

118RF0339LK

**NEW**

RRP ..... WSP .....

**ACTIVITIES:** Climbing, Bouldering

**BENEFITS:** breathable, durable, stretch,  
YKK zipper

**PRODUCT FEATURES:**

- partly elastic waistband
- 2 front pockets
- 1 rear pockets
- gusset for freedom of movement
- Velcro fly opening
- ergonomic pre-shaped knees
- side loops for brush

**MAIN MATERIAL:** 97% cotton 3% elastane

**FINISHING:** washed

**FIT:** straight

**SIZE:** XS-XL

**WEIGHT:** 280 g (M)



Enamel Blue



Poinciana



Majolica Blue





# RESULT PANTS

118RF0340LP

RRP ..... WSP .....

**ACTIVITIES:** Climbing, Bouldering  
**BENEFITS:** breathable, durable, stretch,  
 YKK zippers

## PRODUCT FEATURES:

- elastic waistband
- 2 front pockets
- 2 large low-set rear pockets
- gusset for freedom of movement
- ergonomic pre-shaped knees
- bottom leg regulation with drawstring
- side loops for brush

**MAIN MATERIAL:** 97% cotton 3% elastane  
**FINISHING:** washed

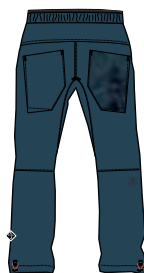
**FIT:** regular

**SIZE:** XS-XL/ XS+/ S+/ M+

**WEIGHT:** 400 g (M)



Majolica Blue **NEW**



Enamel Blue **NEW**



Poinciana **NEW**



Pewter



Lipstick red



Seaport



Dark Navy



Golden spice



# BOMBER PANTS

118RF0341LP

RRP ..... WSP .....

**ACTIVITIES:** Climbing, Bouldering  
**BENEFITS:** durable, stretch, YKK zippers

**PRODUCT FEATURES:**

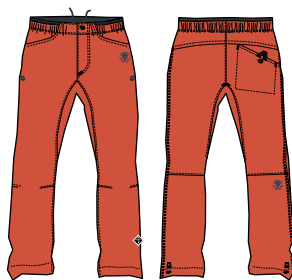
- elastic adjustable drawcord waistband
- 2 front pockets
- 1 rear pocket
- gusset for freedom of movement
- ergonomic pre-shaped knees
- bottom leg regulation with drawstring
- side loops for brush

**MAIN MATERIAL:** 97% cotton 3% elastane  
**FINISHING:** washed

**FIT:** regular  
**SIZE:** S-XXL  
**WEIGHT:** 540 g (M)



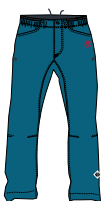
Enamel Blue **NEW**



Poinciana **NEW**



Garnet



Seaport



Dark Navy



Limoges



Citronelle





# FAUX PANTS

118RF0342LP

RRP ..... WSP .....

**ACTIVITIES:** Bouldering, Travel  
**BENEFITS:** breathable, stretch, soft, YKK zippers

## PRODUCT FEATURES:

- belt loops
- 2 front pockets
- 2 rear patch pockets with flaps
- gusset for freedom of movement
- ergonomic pre-shaped knees

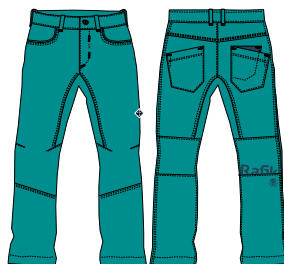
**MAIN MATERIAL:** 98% cotton 2% elastane

**FINISHING:** twill carbon peach , washed

**FIT:** regular

**SIZE:** S-XXL

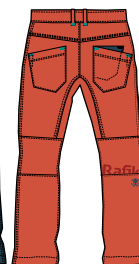
**WEIGHT:** 390 g (M)



Enamel Blue **NEW**



Majolica Exotic **NEW**



Poinciana **NEW**



Majolica blue



Bayberry **NEW**

# VERTIC PANTS

118RF0344LP

RRP ..... WSP .....

**ACTIVITIES:** Bouldering, Travel  
**BENEFITS:** breathable, durable, stretch,  
YKK zippers

**PRODUCT FEATURES:**

- belt loops
- 2 front pockets
- 2 large rear pockets
- gusset for freedom of movement
- integrated shell fabric loop for brush

**MAIN MATERIAL:** 98% cotton, 2% elastane denim  
**FINISHING:** washed

**FIT:** straight  
**SIZE:** S-XXL  
**WEIGHT:** 620 g (M)



Denim



Night Denim





# BOBBY JR

## SHORT SLEEVE T-SHIRT

118RF0345KT

RRP ..... WSP .....



**ACTIVITIES:** Climbing, Bouldering, Travel

**BENEFITS:** breathable, soft

**PRODUCT FEATURES:**

- prints variation

**MAIN MATERIAL:** single jersey 160

100% organic cotton

**FINISHING:** bio washed

**FIT:** regular

**SIZE:** 128, 140, 152

**WEIGHT:** 95 g (152)



Lipstick red



Seaport



Sunny lime

# PIKE JR PANTS

118RF0346LP

RRP ..... WSP .....

**ACTIVITIES:** Climbing, Bouldering, Travel

**BENEFITS:** breathable, durable

**PRODUCT FEATURES:**

- elastic waistband with regulation
- ergonomic shaped knees
- 2 front pockets
- rear pocket
- bottom leg regulation with drawstring
- side loop for brush

**MAIN MATERIAL:** 70% cotton 30% nylon

**FINISHING:** peach

**FIT:** regular

**SIZE:** 128, 140, 152

**WEIGHT:** 220 g (152)



Paradise pink



Majolica blue







# MEG II INSULATED JACKET

118RF0347HJ

RRP ..... WSP .....

**DURATHERM**



**ACTIVITIES:** Climbing, Bouldering, Travel  
**BENEFITS:** water-repellent, wind-resistant, insulating, YKK zippers

## PRODUCT FEATURES:

- 2-way main zipper with internal full-length windproof flap
- 2 zipped main pockets
- chest pocket
- fixed hood with elastic binding and regulation
- low-hem and cuffs with elastic binding
- ergonomic shaped sleeves
- compression bag

**MAIN MATERIAL:** 100% nylon ripstop

**FINISHING:** WR

**LINING:** 100% nylon ripstop

**INSULATION:** 100% polyester / Duck down 90/10

**FIT:** regular

**SIZE:** 34 – 42

**WEIGHT:** 415 g (36)



Beaujolais



Majolica Blue

# FLYNN

## INSULATED JACKET

118RF0348HJ

RRP ..... WSP .....



**ACTIVITIES:** Climbing, Bouldering, Travel  
**BENEFITS:** water-repellent, wind-resistant, insulating, YKK zippers

### PRODUCT FEATURES:

- 2-way main zipper with internal full-length windproof flap
- 2 zipped main pockets
- fixed hood with regulation
- low-hem with regulation
- cuffs with elastic binding
- ergonomic shaped sleeves

**MAIN MATERIAL:** 100% nylon ripstop

**LINING:** 100% nylon ripstop

**INSULATION:** 100% polyester

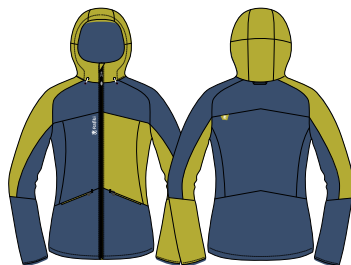
**FIT:** regular

**SIZE:** 34 - 42

**WEIGHT:** 395 g (36)



Paradise Pink / Ensign Blue



Ensign Blue / Citronelle





# SHINE FULL-ZIP HOODED SWEATSHIRT

118RF0348KM

RRP ..... WSP .....

 **POLAR STRETCH**

**ACTIVITIES:** Climbing, Bouldering

**BENEFITS:** warm, breathable, stretch, soft,  
YKK zippers

**PRODUCT FEATURES:**

- 2-way main zipper
- 2 zipped main pockets
- tailored hood with elastic binding
- cuffs with elastic binding

**MAIN MATERIAL:** 95%polyester/5%elastane

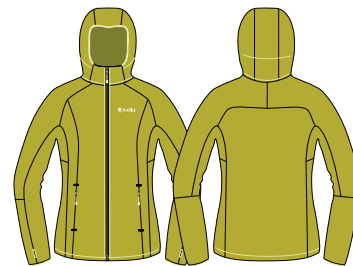
**FIT:** regular

**SIZE:** 34 - 42

**WEIGHT:** 400 g (36)



Stargazer



Citronelle

# ADORE INSULATED PANTS

118RF0350HP

RRP ..... WSP .....

**ACTIVITIES:** Climbing, Bouldering

**BENEFITS:** water-repellent, wind-resistant, insulating, YKK zippers

**PRODUCT FEATURES:**

- long side leg openings
- elastic waistband
- 2 main pockets
- rear pocket
- ergonomic shaped knee



**MAIN MATERIAL:** 100% nylon ripstop

**LINING:** 100% nylon ripstop

**INSULATION:** 100% polyester

**FIT:** regular

**SIZE:** 34 - 42

**WEIGHT:** 295 g (36)



Anthracite







# COLIN II INSULATED JACKET

118RF0351HJ

RRP ..... WSP .....

**DURATHERM**



**ACTIVITIES:** Climbing, Bouldering, Travel  
**BENEFITS:** water-repellent, wind-resistant, insulating, YKK zippers

## PRODUCT FEATURES:

- 2-way main zipper with internal full-length windproof flap
- 2 zipped main pockets
- chest pocket
- fixed hood with elastic binding and regulation
- low-hem and cuffs with elastic binding
- ergonomic shaped sleeves
- compression bag

**MAIN MATERIAL:** 100% nylon ripstop

**FINISHING:** WR

**LINING:** 100% nylon ripstop

**INSULATION:** 100% polyester / Duck down 90/10

**FIT:** regular

**SIZE:** 34 – 42

**WEIGHT:** 485 g (M)



Majolica Blue



Poinciana

# FLETCHER

## INSULATED JACKET

118RF0352HJ

RRP ..... WSP .....



**ACTIVITIES:** Climbing, Bouldering, Travel  
**BENEFITS:** water-repellent, wind-resistant,  
insulating, YKK zippers

### PRODUCT FEATURES:

2-way main zipper with internal full-length  
windproof flap  
2 zipped main pockets  
chest pocket  
fixed hood with regulation  
low-hem with regulation  
cuffs with elastic binding  
ergonomic shaped sleeves

**MAIN MATERIAL:** 100% nylon ripstop

**LINING:** 100% nylon ripstop

**INSULATION:** 100% polyester

**FIT:** regular

**SIZE:** 34 – 42

**WEIGHT:** 470 g (M)



Dark Navy / Citronelle



Ensign Blue / Dark Navy





# SABRE

## FULL-ZIP HOODED SWEATSHIRT

118RF0353KM

RRP ..... WSP .....

 **POLAR STRETCH**

**ACTIVITIES:** Climbing, Bouldering

**BENEFITS:** warm, breathable, stretch, soft,  
YKK zippers

**PRODUCT FEATURES:**

- 2-way main zipper
- 2 zipped main pockets
- tailored hood with elastic binding
- cuffs with elastic binding

**MAIN MATERIAL:** 95%polyester/5%elastane

**FIT:** regular

**SIZE:** 34 - 42

**WEIGHT:** 470 g (M)



Stargazer



Citronelle

# TALUS

CLIMBING BAG



118RF0354BP **NEW**

RRP ..... WSP .....

**ACTIVITIES:** Climbing, Bouldering, Travel

**BENEFITS:** YKK zippers

## PRODUCT FEATURES:

- full-length zipper on the back
- 1 outside zippered pocket
- 2 side pockets
- 1 inside zippered pocket
- rope bag included
- 2 gear loops
- ergonomic shaped sleeves
- shoulder straps with webbing hip belt
- top adjustable webbing belts

**MAIN MATERIAL:** 100% polyester

**FINISHING:** PU coating / PVC coating (Tarpaulin) / DWR

**SIZE:** 55x35x25 cm

**WEIGHT:** 1000 g

**CAPACITY:** 45 l



Anthracite

# ROPER

ROPE BAG

118RF0355BP

RRP ..... WSP .....

**ACTIVITIES:** Climbing, Bouldering, Travel

## PRODUCT FEATURES:

- 2 compression straps
- adjustable shoulder strap
- integrated rope tarp with colour loops
- hold ropes up to 80 m

**MAIN MATERIAL:** 100% polyester 600D

**TARP MATERIAL:** 100% polyester 210D coated

**TARP SIZE:** 135x125 cm

**WEIGHT:** 590 g

**CAPACITY:** 25 l



Sulphur Spring



Charcoal Gray



# FLINT BAG



118RF0367AX

**NEW**

RRP ..... WSP .....

**ACTIVITIES:** Climbing, Bouldering, Travel

**MAIN MATERIAL:** 100% organic cotton

**SIZE:** 38x45 cm

**WEIGHT:** 200 g

**CAPACITY:** 8 l



Charcoal Gray

Majolica Blue

Poinciana

# CARRYALL BAG

118RF0368AX

**NEW**

RRP ..... WSP .....

**ACTIVITIES:** Climbing, Bouldering

**PRODUCT FEATURES:**

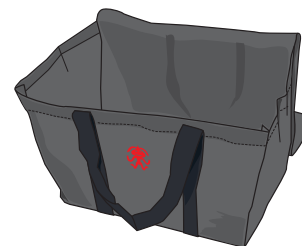
- easy to clean
- space-saving
- inside pocket
- 2 shoulder straps
- integrated tarp (60x60 cm)

**MAIN MATERIAL:** 100% polypropylene

**SIZE:** 60x35x45 cm

**WEIGHT:** 210 g

**CAPACITY:** 70 l (25kg)



Charcoal gray

# CHINO CAP

118RF03630C

RRP ..... WSP .....

**ACTIVITIES:** Climbing, Bouldering, Travel

**MAIN MATERIAL:** 100% ACRYLIC

**SIZE:** UNI

**WEIGHT:** 80 g



Dark navy



Bright White/ Paradise Pink

# CRUZ CAP

118RF03640C

RRP ..... WSP .....

**ACTIVITIES:** Climbing, Bouldering, Travel

**MAIN MATERIAL:** 100% ACRYLIC

**SIZE:** UNI

**WEIGHT:** 115 g



Pewter/ citronelle



Paradise Pink/ citronelle

# ROCKY CAP

118RF0365DC

RRP ..... WSP .....

**ACTIVITIES:** Climbing, Bouldering, Travel

**MAIN MATERIAL:** 100% ACRYLIC

**SIZE:** UNI

**WEIGHT:** 90 g



Anthracite



Citronelle

# FLEX TRUCKER CAP

118RF0366DC

**NEW**

RRP ..... WSP .....

**ACTIVITIES:** Climbing, Bouldering, Travel

**MAIN MATERIAL:** 60% COTTON, 40% POLYESTER

**SIZE:** UNI

**WEIGHT:** 90 g



Anthracite



Majolica blue

# SCOOP CHALK BAG

118RF0357AX

RRP ..... WSP .....

**ACTIVITIES:** Climbing, Bouldering

## PRODUCT FEATURES:

- reinforced neck with drawstring closure
- 2 loops for belt fastening (belt included)
- brush loop
- fleece-lined interior

**MAIN MATERIAL:** 97% cotton 3% spandex

**LINING:** 100% polyester

**SIZE:** UNI

**WEIGHT:** 100g



# CHALK MAGNESIUM



118RF0358AX - 118RF0361AX

RRP ..... WSP .....

**ACTIVITIES:** Climbing, Bouldering

## PRODUCT FEATURES:

- eco cosmetics product (not chemicals)
- 100% healthy

**MAIN MATERIAL:** 100% CHALK





# Bow FLAG

A classic advertising flag available in size S or L. It includes printed textile, flagpole and stand for indoor and outdoor use.

**SIZE:**

S - 55x200 cm

L - 80x340 cm



# BANNER

Banner PVC banner with metal mesh around the perimeter for mounting.

**SIZE:**

3x1 m



# LOGO STAND

PDS-cardboard display stand, two-side print, suitable even for suspension in, e.g. shop windows.

**SIZE:**

35 cm - Circle diameter



# CUBE NEW

Image paper cube, two sides with logo print, three sides with image photo print.

**SIZE:**

30x30 cm



# WRISTBAND



Hand made macrame bracelet of various colours with metal Rafiki pendant.



# STICKERS

Set of 11 pcs self-adhesive labels on A6 sheet. 50 pc per package.

SIZE:  
105x148 mm



# TRESS RF T-SHIRT

118RF0370KT

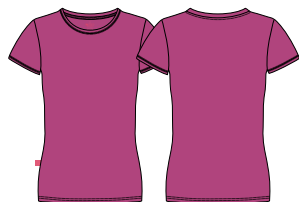
RRP ..... WSP .....

**MAIN MATERIAL:** 60% cotton, 40% polyester

**FIT:** regular

**SIZE:** 36-42

**WEIGHT:** 100 g (36)



Very berry

# SLACK BASIC T-SHIRT

118RF0369KT

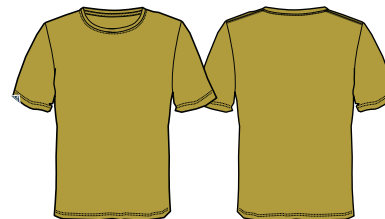
RRP ..... WSP .....

**MAIN MATERIAL:** 100% cotton

**FIT:** regular

**SIZE:** S-XL

**WEIGHT:** 150 g (M)



Golden spice



## WOMAN

	32	34	34+	36	36+	38	40	42	44
	XXS	XS	XS+	S	S+	M	L	XL	XXL
BODY HEIGHT <b>1</b>	161-165	163-167	165-169	165-169	167-171	167-171	169-173	171-175	172-176
CHEST <b>2</b>	77-80	81-84	81-84	85-88	85-88	89-92	93-96	97-100	100-103
WAIST <b>3</b>	59-62	63-66	63-66	67-70	67-70	71-74	75-78	79-82	83-86
HIPS <b>4</b>	85-88	89-92	89-92	93-96	93-96	97-101	102-105	106-109	110-113
INSEAM <b>5</b>	76-79	78-81	82-85	80-83	84-87	82-85	84-87	86-89	88-90

## MAN

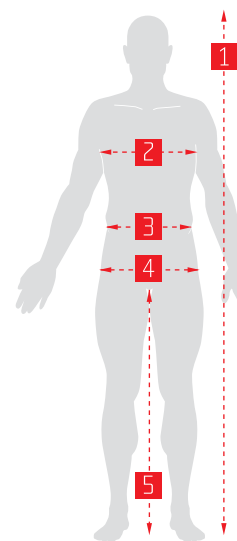
	XS	S	S+	M	M+	L	XL	XXL
	44	46	46+	48	48+	50	52	54
BODY HEIGHT <b>1</b>	163-167	171-176	174-179	174-179	180-184	180-184	182-186	184-188
CHEST <b>2</b>	85-89	90-94	90-94	95-99	95-99	100-104	105-109	110-114
WAIST <b>3</b>	73-77	78-82	78-82	83-87	83-87	88-92	93-97	98-102
HIPS <b>4</b>	87-91	92-96	92-96	97-101	97-101	102-106	107-111	112-116
INSEAM <b>5</b>	82-84	83-85	87-89	84-86	88-90	87-89	89-91	90-92

## KID

	128	140	152
	6-7y	8-9y	10-11y
BODY HEIGHT <b>1</b>	122-128	134-140	146-152
CHEST <b>2</b>	64	69	74
WAIST <b>3</b>	58	63	68
HIPS <b>4</b>	70	75	80
INSEAM <b>5</b>	56	64	73

■ All sizes are in centimetres .

■ The measurements are only indicative .  
We recommend to try out our clothes personally .





The world known brand stands for highly functional and top quality zippers ensuring comfort and reliability even during long-term use. YKK zippers are waterproof, windproof, highly durable, able to withstand extreme weather and therefore are frequently used in technical sports apparel.

---



The Polar Stretch material is hard-wearing, pliable and flexible in all directions, lightweight and easy to maintain. Thanks to the structure of the textile the final apparel is perfectly breathable and transports body odours away. The apparel made from Polar Stretch materials is used as the second or light outer layer, does not restrict movement and is ideal for active sports.

---



Insulation material combining benefits of polyester fibre and duck down (90 down/10 feather). The main advantage is decreased absorption of dampness with maintained excellent thermal insulation and low weight.

---



SEE® eco-warm insulation more than 30% of fibres made with DuPont™ Sorona® a renewable sourced polymer that is made in part with annually renewably plant-based ingredients. Production of Sorona® also requires 30% less energy and reduces greenhouse gas emissions by 63% over an equal amount of petrochemical-based Nylon 6. See eco-warm insulation is excellent in both warmth sealing and breathability. It can perfectly prevent the cold air while effectively remove excessive moisture from the body thus keeping one comfortably warm and dry. Compare with similar products, SEE® insulation can retain its shape with excellent durability after repeated washes. It is ideal choice for both high-end garments in terms of shape retention and smart active-wear in terms of comfort and light-weight. SEE Insulation has passed BLUE SIGN certificate.

---



Cotton generally enjoys a positive image but its production process does not exactly gain any plaudits from an environmental aspect. Production of organic cotton is more eco-friendly. It is grown without pesticides, synthetic fertilizers and genetically engineered seeds having low impact on the environment, preventing the waste of water, replenishing the soil and promoting the balance of ecosystems. All the benefits of conventional cotton such as softness, comfort and hypoallergenic are remaining.



Classic fabrics are synonymous with high durability and are the fabrics of choice in some of the world's toughest environments. With over thirty years of trusted, rugged performance, the fabrics provide durable performance for a variety of end uses, including packs, luggage, footwear and performance apparel. CORDURA® Classic fabrics are resistant to tears, scuffs and abrasions, so products made with the fabric provide long-lasting durability.

---



The bluesign® system focuses on chemicals and their impact on resources, people and the environment. The bluesign® system aims at reducing the negative impact that chemicals may have on people and on the environment, ensuring a responsible use of resources and guaranteeing the highest level of consumer safety. Rafiki brand use SEE® eco warm insulation which is made according to the bluesign® standard.

---

## BIDWASH

Biowash is a wet, permanent finish that is usually done before dyeing. Softness of the fabric increases after adding bio wash as during touch we do not feel rough ends on the fabric. Its gentleness increase the fabric life and makes the clothing more durable. Bio wash has replaced chemicals that were earlier harsh breaking the fabric and decreasing its life. It also increase the lustre and shine on the clothes as compared to chemical soaps.

It also protects our skin from various ailments and allergies that can be caused by other chemical washes. It also preserves the colour of your garments thus preventing colour loss or shading of the garments.

Using of bio wash has been good for the environment too, as it is a natural chemical, nature easily breaks it down to lower components that are not harmful to humans and animals both.

---

## SILICON WASH

Silicon wash gives durable softness, elastic handle to the garment . It helps to antipilling affects, dimensional stability, tear resistance as well as the fabrics to be cut and sewn more easily allows and improving wears and easy care properties.

The background of the entire page is a complex, repeating pattern of pink lines on a white background. These lines form a series of interlocking, jagged, zigzag shapes that resemble stylized architectural structures or a topographical map. The pattern is dense and covers the entire area except for a small vertical strip on the left.

rafiki.cz

Americká 54 | 301 00 Plzeň | Czech Republic  
tel.: + 420 379 200 666 | office@rafiki.cz



[www.facebook.com/rafiki.climbinglife](https://www.facebook.com/rafiki.climbinglife)



[#rafikiclimbing](https://www.instagram.com/rafikiclimbing)